

CLIPPER

STANDARD FEATURES

- Many sizes also available in QuickShip with lead times of 2 weeks or less - 028 Gray
- Shelves are adjustable on 1" centers
- Shelves are available in Heavy Duty and Extra Heavy Duty
- Reinforcing is available for Extra Heavy Duty Shelves for maximum capacity
- Wide variety of accessories including Foot Plates (not shown), Base Strips, Label Holders Shelf Dividers, Bin Fronts, and Swinging Doors (not shown)
- Can be designed for use in High Seismic Areas



 **Material Handling USA**
800-326-4403
<https://www.mh-usa.com/>
Sales@MaterialHandling-USA.com

Clipper Shelving features Hi-Performance Box Beam Shelves, which offer an exceptional strength to weight ratio. Clipper Shelving offers a wide variety of sizes and capacities too. This gives you the flexibility to provide top quality storage for a simple back room area up to a sophisticated multi-level or high-rise application.



AT A GLANCE

ABOUT PENCO

Penco's nearly 155-year history of providing a full range of storage solutions, achieves an unmatched level of expertise and innovation of products and high level of customer support.

STANDARD SHELVING

The heart of the Clipper Shelving System is the Penco Clipper Clip. It is easily installed, holds the shelf firmly in place, can be repositioned at any time, and helps make the shelving more rigid.

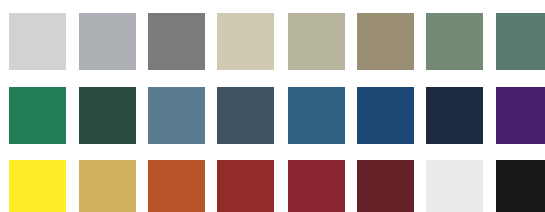


Penco Clipper Clip

- Easy installation provides flexibility to suit your shelving needs
- Holds shelf firmly in place and increases rigidity
- Can be repositioned at any time

FINISH

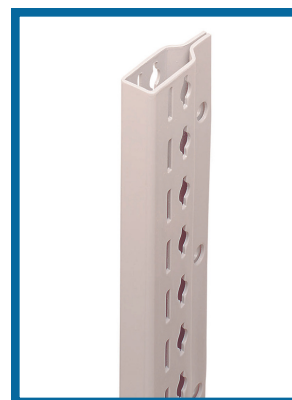
High quality powder coat finish applied in strict adherence to paint manufacturer's specifications to provide optimum appearance and performance. Finishes releasing VOCs are not acceptable. Standard coating thickness is 1 mil dry film thickness minimum. Colors as selected from manufacturer's standard colors.



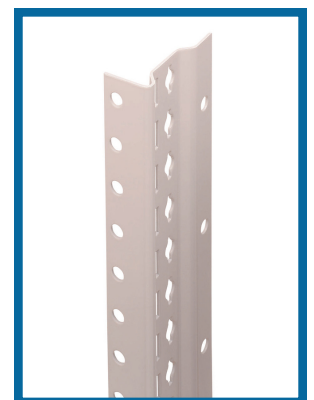
Open Unit



Closed Unit



Box Post



Offset Angle Post

