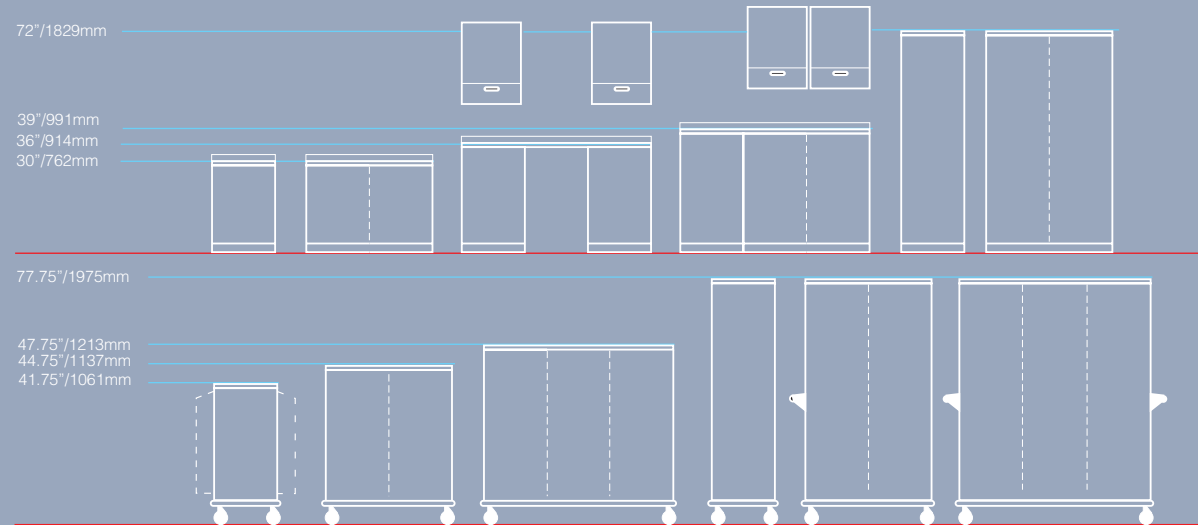




The Starsys Modular Storage, designed to be a fully-integrated, fully-adaptable, modular storage system, is based on three basic components: single-, double-, and triple-wide configurations. Available as open shelving, open carts, or as enclosed storage or transport units, these three basic modules can be configured quickly and easily with interchangeable system components.



CLEANER BY DESIGN*

*Microban protection is not designed to protect users against disease causing microorganisms.

- Microban® antimicrobial protection helps to keep products "cleaner between cleanings."
- Advanced polymer and other proprietary finishes provide corrosion resistance.
- Smooth, rounded corners to allow for easier cleaning.



Contact us today.

WWW.METRO.COM

Corporate Headquarters
651 North Washington Street
Wilkes-Barre, PA 18705
Phone: +1 570 825 2741

U.S. & Canada Customer Service
Phone: 1.800.992.1776
Fax (PA): +1 800 638 9263
Fax: (CA): +1 800 638. 3292

Product Information/Literature
Phone: 1.800.992.1776
U.S & Canada Only
www.metro.com/literature

**International Sales/
Customer Service Offices**
Middle East/Africa/India
Dubai-United Arab Emirates
Phone: +971 4 811 8286
Fax: +971 4 886 5465

Asia/Pacific
Singapore
Phone: +65 6829 5382

Latin America
Mexico
Phone: +52 33 362 778 30

Europe
The Netherlands
Phone: +31 76 587 7550
Fax: +31 76 581 1313



LO4-107 REV 5/18

© 2018 InterMetro Industries Corporation, Wilkes-Barre, PA 18705
MICROBAN is a registered trademark of Microban Products Company.



We put space to work.



The only fully-integrated, fully-adaptable, modular storage system.

an Ali Group Company



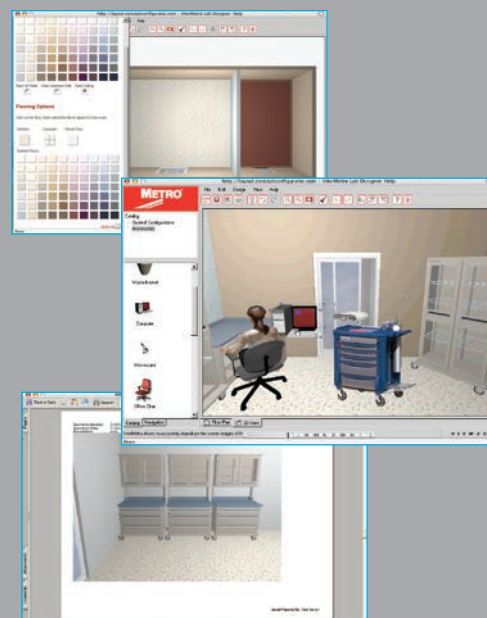
The Spirit of Excellence



Design it your way using our product configurator.

Our proprietary Metro Configurator lets you create room layouts and configure alternative scenarios to effectively use your space to your best advantage. Our sales support team can provide 3D renderings when needed.

metroconfigurator.com



Starsys delivers an efficient use of space, better organization and the freedom to be flexible.

- Complete Storage System- Addresses applications facility- wide.
- Interchangeable Components- Provides flexibility to address changing needs.
- Modular Design- Provides flexibility to change layout and/or location.
- Highly Configurable- Design on wheels, with countertops, even on the walls.
- Polymer Construction- Maintains function and aesthetic over time.



Metro incorporates several elements in its product design to support a facility's cleaning protocols:

- Microban® antimicrobial protection helps prevent the growth of stain and odor causing bacteria on the product.
- Advanced polymer and other proprietary finishes provide corrosion resistance
- Smooth rounded corners to allow for easier cleaning

Look for the "red check" symbol for this added protection.



Thinking Systems.

Let's face it, a good system just works better. It's more efficient. It's fully integrated. It uses every square inch of space to your best advantage, and it delivers the capability of fully interchangeable components — an absolute necessity in today's ever-changing work environment. All of which makes you better prepared to meet change head on. The Starsys System is complete, modular, and welcomes change. Please take a closer look inside this high-efficiency system.

- A. Mobile Cart Solutions
- B. Moveable Modular WorkCenter Solutions
- C. Stationary Modular WorkCenter Solutions
- D. Stationary Modular Cabinet Solutions
- E. Overhead Storage Solutions



Starsys is a Polymer System —
Will not rust, dent or chip!





Perfect Synergy.



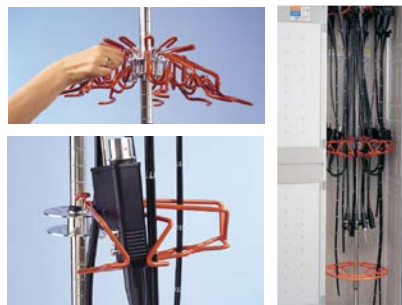
Starsys Catheter Storage Module

The synergy of a system: Starsys components function the way your team functions—efficiently. Well-planned aesthetics and modular components let you choose the precise accessories for configurations that enhance operational efficiency without sacrificing visual appeal.

- A.** Hinged doors are available in multiple heights, locking or non-locking and clear or opaque.
- B.** Tambour doors can be opened (fully or partially) without ever intruding on work or storage space.
- C.** Modular design allows for a mix of open (shelves) or closed (drawers) storage solutions.
- D.** Specialty accessories are available to properly store supplies, like hanging catheters.
- E.** The system design allows open spaces for knee-holes, refrigerators and other special requirements.
- F.** The catheter high-density storage module provides quick access and retrieval, visual inventory and easy identification.



Precise Procedure.



Starsys Scope Storage Cabinet

Precise, yet unobtrusive: Create a perfect setting for any procedure. Key components, i.e. scope storage, supply transport and procedure carts, can be integrated for seamless aesthetics and functional efficiency. The advanced polymer construction of the Starsys system will not dent, chip, rust, or corrode. High-endurance work surfaces and base units are designed for easy cleaning.

- A.** Drawers are available single wide or double wide for storage of larger instruments.
- B.** Overheads can be wall mounted or attached to mobile work centers.
- C.** Specialty storage solutions for expensive equipment like scopes are standard in Starsys.

- D.** Even though modular in design, customized installation can give the appearance of a built-in.
- E.** Various countertop materials are available including laminates, solid surfaces and stainless steel.



Quick Response.



Cart Accessory Storage

Check your pulse: When the pace quickens, the Starsys system keeps up. Interchangeable modules let you adapt to changing scenarios, diverse work styles, and wide-ranging needs. The system can be configured into bedside, procedure and supply carts, as well as task-specific workcenters. Mobile computing configurations combine supply storage and bedside documentation—saving you precious space.

Areas such as the Emergency Department have varying case loads and requirements on a daily basis. In addition, they must mobilize or reset to address dramatic changes in process and flow, as experienced in disaster response.

All configurations shown here are on wheels to provide ultimate flexibility and mobility when needed to reconfigure the space at a moment's notice.

Procedure Carts



Cart configurations range from the very basic to fit within space constraints or budget limitations, to the sophisticated that provide the added functionality required by Anesthesia, Specialty Procedures and other critical applications.



Accessory options and mounting flexibility are available to meet a wide range of applications.



Easy-exchange, easy-clean drop-in drawer totes and pullout work surfaces improve workflow.

Unique side storage units provide key benefits:

1. **Saves Time** – Keeps more supplies at the point of care.
2. **Reduces Strain** – Access side storage at the front of cart.
3. **Rationalize Equipment** – Expandable work surface negates need for ancillary equipment surfaces.
4. **Maximizes Floor Space** – Side storage units can close when not used.



It's a simple procedure with endless possibilities.

Users' personalities vary and as such they have a unique way to work. We thought about this, then developed a procedure cart platform that can be configured to meet the needs of the user as well as the application, so you can standardize on a solution that will work. From Bedside Carts to specialized applications for Medications, I.V. Therapy and Critical Care, we thought of everything —especially you.



Passive locking with plastic seals provides a level of visual security that indicates potential supply discrepancy without compromising access.



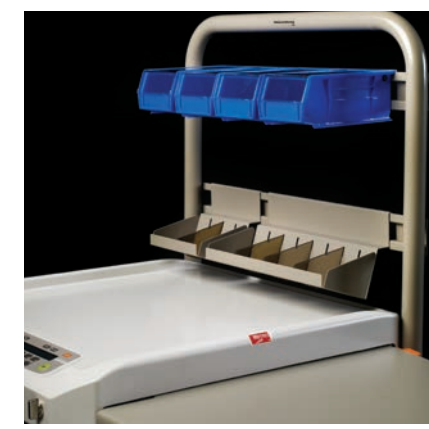
Keylocks maintain cart security by allowing only authorized users with keys access to supplies.



Electronic locks provide authorized access without the use of keys. Optional upgrades include audit tracking, access reports and card reader entry.



Pull out side shelf adds workspace when needed, without adding to the cart's footprint, when stowed.

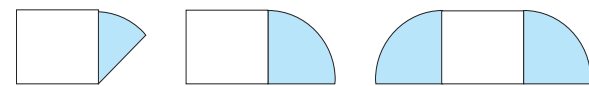


Overbridge storage options help organize clutter off the workspace and provide a convenient location for electronic equipment.



A variety of accessories are available to make your solution smarter.

Thoughtful details.



135% more space.

Opening both side storage units more than doubles the work surface.



Drawer label holders provide an effective method of identifying drawer contents.



Drawer dividers are critical to maintaining an organized storage space.



Easy-exchange, easy-clean drawer totes drop into drawer frames.



Drawers are removable and interchangeable without tools.



Translucent tilt-out side bins add handy visible storage. Optional locks keep contents secure.

Tilt-out side storage bins can be locked for additional secure storage.



Side storage units offer a variety of accessory options.

Supply Carts



Double wide tall cabinets provide flexible storage options including small item storage in drawers, bulkier storage on shelves, even hanging solutions for taller items.



Single wide tall units use vertical storage space to make up for floor space that you may not have available. These units can be configured with shelves, doors or a combination of drawers and shelves with doors.



Tambour doors are an alternative solution to secure contents, whether visually or under lock and key. Tambour doors are ideal for crowded areas where the door swing is not always practical.

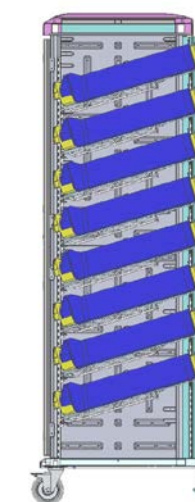
XD Supply Carts



Extra Deep (XD) design creates added capacity for increased storage space. The added space accommodates longer items and presents a novel lean two-bin approach for protected supply management. Shelves can be repositioned easily and can be set from horizontal up to a ± 20 degree angle for (-) supply containment or (+) optimum visibility and accessibility, especially for the upper shelves.



Low-profile shelf design allows for maximum space efficiency.



Cabinet and shelves facilitate two-deep, two-wide, or two-high bin configurations for an efficient two-bin process.

XD design with shelves installed at an angle also accommodates the deeper bins available from automated supply cabinets.

A healthy supply of options.



Whether short or tall, narrow or wide, Starsys supply carts can be configured in countless ways to customize your storage space. Also, with drawers, shelves and accessories for general storage and specialty modules for catheters, scopes, sutures and the like, customization becomes a standard feature.



This dual function accessory provides high density hanging storage as well as shelf storage.



Pullout module provides dense storage without compromising visibility to key supplies.



Optional push handles provide an ergonomic means to maneuver carts.



Easy-exchange, easy-to-clean full extension drawer totes and baskets provide contained storage behind doors.

Mobile Workcenters



Knee-hole configurations offer space for seating or under-counter equipment.



Mobile workcenters are highly configurable as single, double or triple wide solutions.



Optional overhead cabinets or open storage provide instant access to supplies or equipment.

Caster Options



B3P-TL

3" Total-Lock Caster:

Utilize 3" total-lock plate casters for limited mobile applications or when additional storage area is required.



B5PC-TL

5" Total-Lock, All-Polymer Caster:

Recommended for corrosive environments. All-polymer total-lock plate caster is an economical alternative to stainless casters.

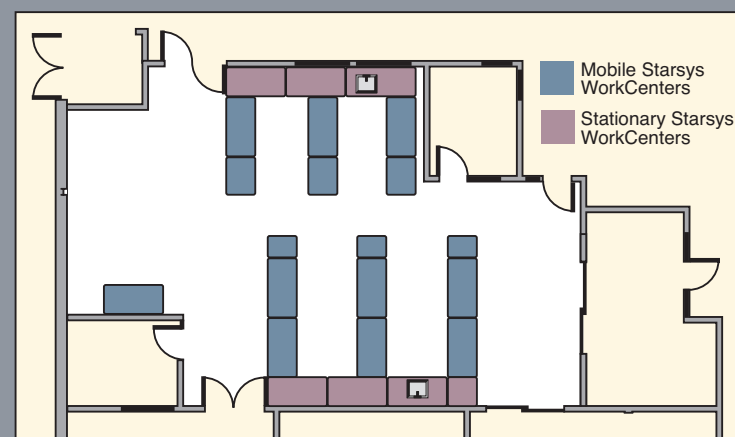
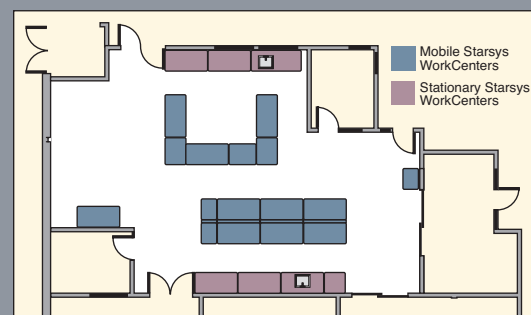


B3N-AS

Stabilizer/Leveling Caster:

Recommended for applications where benchtop equipment demands unit stability and/or a level worksurface. Engage caster foot for stability; release for mobility.

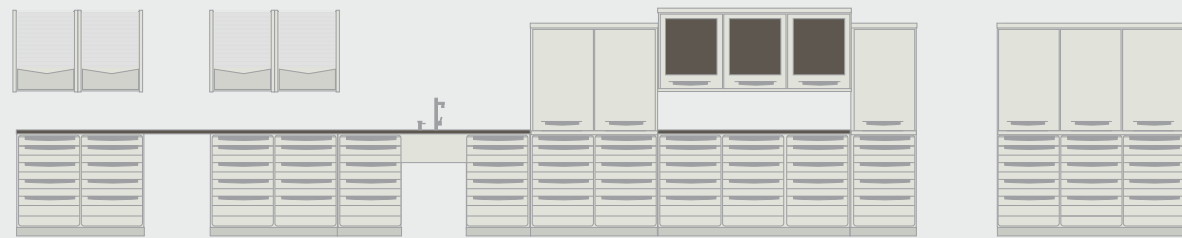
Starsys Mobile Workcenters, when combined with stationary Workcenters, can facilitate a fast and easy reconfiguration in under 20 minutes.



Space you need, where & when you need it.

One thing is certain, what you design today will not be adequate as your needs change and grow. Starsys mobile workcenters remove that uncertainty by providing you the flexibility to reconfigure your workspace or if need be, move it, to afford you to keep pace with your needs.

Stationary Workcenters



Work functions change almost without warning. Starsys Workcenters are designed to be reconfigured. Modular components — doors, drawers, adjustable shelves, full extension shelves, even colors and accessories, can be interchanged to create a highly workable, highly adaptable solution. One that works.



Optional slide-out catheter storage module provides a safe, well organized storage system.



Optional sloped top keeps units free of top surface dust and discourages storage on top of cabinet.



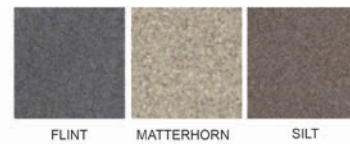
Wire shelves provide heavier duty storage and are available single or double wide in fixed or full extension.



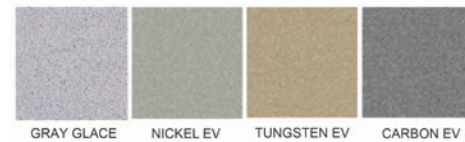
Polymer shelves easily adjust and provide a smooth surface to minimize costly tears in packaging of sterile supplies or wrapped instruments.

Laminate & Solid Surface Colors

Solid Surface

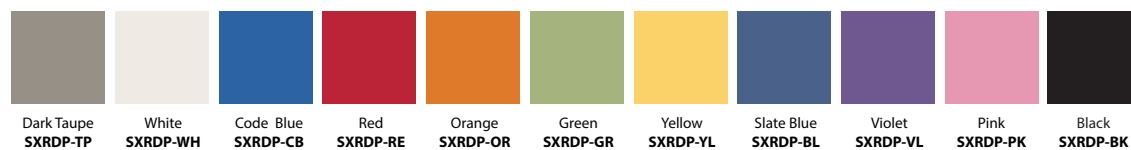


Laminate



Note: Epoxy Resin, Phenolic, and Stainless Steel work surfaces are available.

Drawer/Door Pull Colors



Specialty cabinets provide, specialized storage for items like scopes and catheters, where needed.

Overhead storage is an optional way to maximize storage space. Overheads are available with clear or solid swing doors or space efficient tambour doors.



Whether you have a mobile workcenter or a modular stationary configuration a quality countertop for the application is key to maintaining a long lasting functional workspace. A broad selection of countertops from solid surfaces and laminates, to stainless steel are available to provide chemical or corrosion resistance or to simply offer a color to match the décor.



Super Erecta® Suture Cart



MetroTrux™ Convertible Linen Truck



MetroMax™ Supply Cart



Inhalation Therapy Cart



Top-Track® High Density Storage



Super Erecta® Catheter Procedure Cart

Still haven't found the cart you need? We have it, just visit www.metro.com



Solutions for easy transport and access of surgical supplies.

Metro's line of high and low profile closed case carts provide the most combined storage capacities in their four sizes than any competitor on the market. Ergonomically designed handles, reduced footprint, and your choice of stainless steel or polymer casters provide you with superior maneuverability. Access contents with roller shelves that extend easily and quietly, even at the lowest levels.



Lifeline® Code Response Cart



qwikSIGHT® Basket Supply System



Starsys® Secure I.V. Cart



Flexline® with Power



Lionville® Series 400



Metro® myCartSeries® Utility Cart



Super Erecta® Security Cart



Super Adjustable Super Erecta® Supply Cart