



# Shelving and Racks

## Available Standard Colors



Textured Putty



Textured Dove Gray



Textured Black



Textured Safety Yellow



Textured Cherry Red



Textured Regal Blue



Mirror Silver  
(Wire Shelving Only)



Smooth Office Gray



Smooth Reflective White

## Design Benefits & Features

Industry leader in structural integrity.

Exclusive V-Grip™ compression design.

Precision engineered for reliable performance.

Flexible selection of standard components.

System components are adjustable for convenient reconfiguration.

Durable enamel paint finish.

Accommodates high-rise and multi-level applications.

## Space Utilization Advantages

V-grip with modular drawers increases small parts storage density.

V-grip on mobile aisle eliminates wasted aisle space.

Double deck V-Grip uses wasted overhead space.

## Market Applications

Manufacturing - parts/supplies, maintenance, R and D, tool room.

Automotive - parts department, service areas, bulk parts, archival records.

Education - athletic department, maintenance, supplies.

Retail - backroom storage, merchandise display.

Government - military bases, vehicle & flight maintenance, supply departments.

Healthcare - pharmacy, supplies, maintenance.

Law enforcement - property and evidence, supplies.

 **Material Handling USA**

**800-326-4403**

<https://www.mh-usa.com/>  
[Sales@MaterialHandling-USA.com](mailto:Sales@MaterialHandling-USA.com)

# V-Grip™ Shelving

At the heart of Equipto's engineered space solutions is V-Grip, an industrial shelving system design that is unmatched in structural integrity and provides the industry's broadest selection of accessory components to meet virtually any application.

- V-Grip upright posts have an exclusive triangular design that maximizes load-bearing capability while providing a smooth front surface without unsightly holes or hardware.
- Combine V-Grip components to meet specific applications:
- Heavy duty steel shelves
- Wire shelves for better flow of light and air
- Versa rack shelf beams accommodate wood, wire or steel shelves
- Modular drawers in 48 different sizes with a capacity of 200 or 400 lbs.
- Use full or partial height dividers to create custom storage bins
- Bulk rack options including solid or wire shelves with spans up to 8 feet and capacities up to 3400 lbs. per level
- Reflective white back and end panels
- Consult Customer Service if you are in a seismic zone

Multiple connected V-Grip shelving units are shown below.



A standard color chart is available at the beginning of each section with a more detailed one on page 126.

# The Versatility of the V-Grip™ Upright Post

One post - 10 shelf options

Wire rack truss is designed with a rigid 3-point connection for maximum rigidity.  
(see page 13)

Bulk rack beams with reinforced waterfall wire decking for maximum load capacity in a wire deck application.  
(see pages 21-24)

Bulk rack beams with reinforced drop-in wire decking.  
(see pages 21-24)

Bulk rack beams with heavy duty 18 gauge corrugated steel deck panels.  
(see pages 21-24)

Versa rack shelf beams with 24 gauge corrugated steel deck shelf.  
(see pages 17-19)



Wire shelf with integrated wire truss for maximum rigidity.  
(see page 06, 10 and 13)

Heavy duty 18 gauge solid steel shelf.  
(see page 13)

Modular drawers come in 48 standard sizes in 200 lb. and 400 lb. capacity.  
(see pages 14-15)

Versa rack shelf beams with drop-in wire shelf.  
(see page 18-19)

Versa rack shelf beams with 5/8" particleboard shelf.  
(see page 18-19)

A standard color chart is available at the beginning of each section with a more detailed one on page 126.

**V-Grip™ Shelving features the most efficient fastening principle known:**

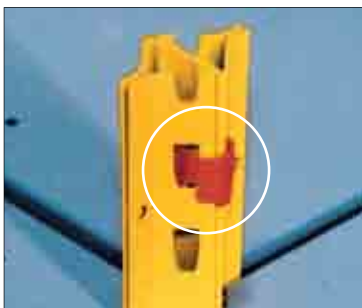
Corner shelf reinforcements with extruded studs insert easily into tapered slots in uprights. Shelf corner drops firmly over corner reinforcement and seats itself. Four-way, crossed tension minimizes deflection, and imparts superior strength and rigidity to the unit.



Double-flanged V-Grip uprights allow easy side-by-side assembly of shelving in rows, with the strongest configuration. Each flange of the upright supports a shelf from one adjoining unit only.



Heavy duty V-Grip shelves are constructed of 18-gauge steel, and double-flanged on all four sides for maximum strength and firmness.



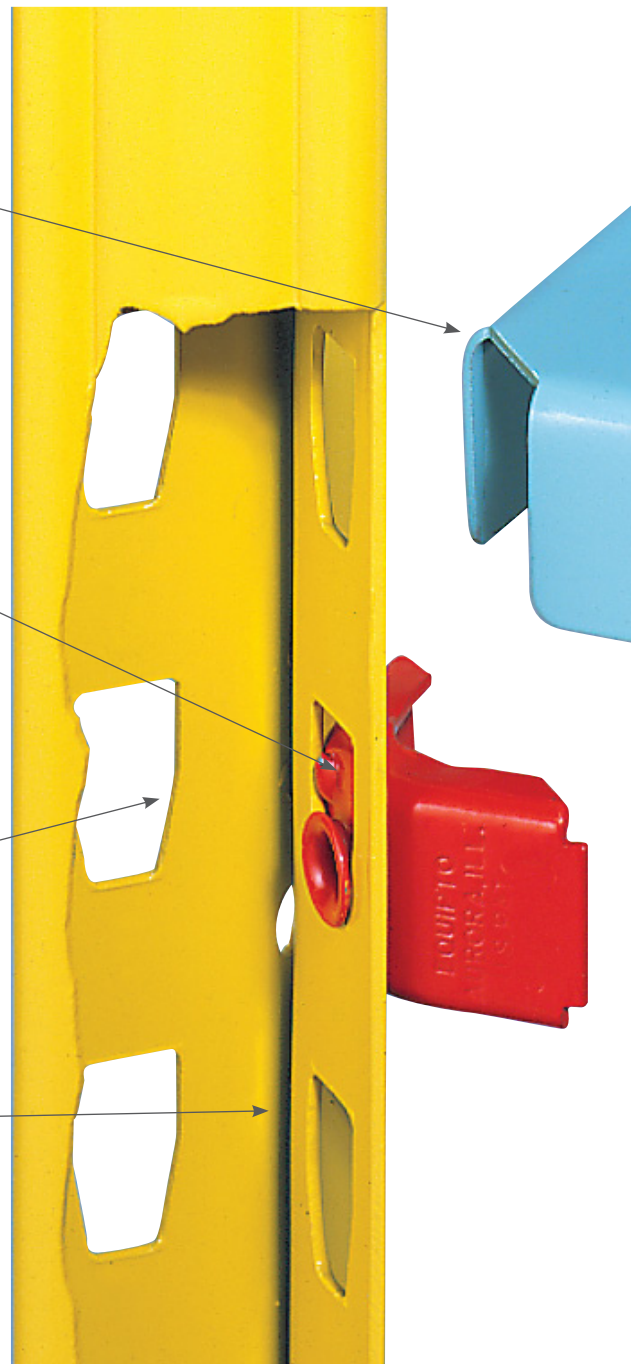
Common upright clamp provides back-to-back reinforcement.\*\*



Optional drawers maximize cubic density in V-Grip shelving.

**Versatile V-Grip uprights**

Permit practical back-to-back assembly of shelving units, with the same, strong reinforcement that actually strengthens shelves and uprights, yet permits their easy adjustment, and features a capacity up to 9000 lbs.



Shelves adjust instantly on 1 1/2" centers, without disturbing shelves in adjoining units.

Corner reinforcement inserts into upright; shelf simply fits down over it, and locks into place.\*

Tapered slots in uprights accept corner reinforcements for 4-way shelf support.

Double-flanged upright avoids two shelves from adjoining units placing stress on a single flange.

\* Shown in color for clarity, actual part is zinc plated.

\*\* Shown in color for clarity, actual part is galvanized steel.

**Shelving & Racks**

**V-Gript™ Solid Shelving - Open - 84”H**

Depth	Width	Shelf Capacity	5 Shelves		7 Shelves		Extra Shelf
			Starter	Add-On	Starter	Add-On	
<b>12” Depth</b>							
12”	36”	650 lbs.	661-5S	661-5A	661-7S	661-7A	6230
12”	36”	940 lbs.	761-5S	761-5A	761-7S	761-7A	6230R
12”	42”	500 lbs.	661Y5S	661Y5A	661Y7S	661Y7A	6250
12”	42”	900 lbs.	761Y5S	761Y5A	761Y7S	761Y7A	6250R
12”	48”	430 lbs.	661W5S	661W5A	661W7S	661W7A	6240
12”	48”	700 lbs.	761W5S	761W5A	761W7S	761W7A	6240R
<b>18” Depth</b>							
18”	36”	700 lbs.	663-5S	663-5A	663-7S	663-7A	6231
18”	36”	1,170 lbs.	763-5S	763-5A	763-7S	763-7A	6231R
18”	42”	500 lbs.	663Y5S	663Y5A	663Y7S	663Y7A	6251
18”	42”	900 lbs.	763Y5S	763Y5A	763Y7S	763Y7A	6251R
18”	48”	440 lbs.	663W5S	663W5A	663W7S	663W7A	6241
18”	48”	740 lbs.	763W5S	763W5A	763W7S	763W7A	6241R
<b>24” Depth</b>							
24”	36”	721 lbs.	665-5S	665-5A	665-7S	665-7A	6232
24”	36”	1,000 lbs.	765-5S	765-5A	765-7S	765-7A	6232R
24”	42”	500 lbs.	665Y5S	665Y5A	665Y7S	665Y7A	6252
24”	42”	900 lbs.	765Y5S	765Y5A	765Y7S	765Y7A	6252R
24”	48”	450 lbs.	665W5S	665W5A	665W7S	665W7A	6242
24”	48”	720 lbs.	765W5S	765W5A	765W7S	765W7A	6242R
<b>36” Depth</b>							
36”	36”	670 lbs.	667-5S	667-5A	667-7S	667-7A	6234
36”	36”	790 lbs.	767-5S	767-5A	767-7S	767-7A	6234R



Reflective white back and end panels are standard, regardless of shelf color  
 Add 1<sup>5/8</sup>” to nominal shelving row width to determine total row width.

**V-Gript™ Solid Shelving - Closed - 84”H**



Depth	Width	Shelf Capacity	5 Shelves		7 Shelves		Extra Shelf
			Starter	Add-On	Starter	Add-On	
<b>12” Depth</b>							
12”	36”	650 lbs.	671-5S	671-5A	671-7S	671-7A	6230
12	36”	940 lbs.	771-5S	771-5A	771-7S	771-7A	6230R
12	42”	500 lbs.	671Y5S	671Y5A	671Y7S	671Y7A	6250
12	42”	900 lbs.	771Y5S	771Y5A	771Y7S	771Y7A	6250R
12	48”	430 lbs.	671W5S	671W5A	671W7S	671W7A	6240
12	48”	700 lbs.	771W5S	771W5A	771W7S	771W7A	6240R
<b>18” Depth</b>							
18”	36”	700 lbs.	673-5S	673-5A	673-7S	673-7A	6231
18	36”	1,170 lbs.	773-5S	773-5A	773-7S	773-7A	6231R
18	42”	500 lbs.	673Y5S	673Y5A	673Y7S	673Y7A	6251
18	42”	900 lbs.	773Y5S	773Y5A	773Y7S	773Y7A	6251R
18	48”	440 lbs.	673W5S	673W5A	673W7S	673W7A	6241
18	48”	740 lbs.	773W5S	773W5A	773W7S	773W7A	6241R
<b>24” Depth</b>							
24”	36”	721 lbs.	675-5S	675-5A	675-7S	675-7A	6232
24	36”	1,000 lbs.	775-5S	775-5A	775-7S	775-7A	6232R
24	42”	500 lbs.	675Y5S	675Y5A	675Y7S	675Y7A	6252
24	42”	900 lbs.	775Y5S	775Y5A	775Y7S	775Y7A	6232R
24	48”	450 lbs.	675W5S	675W5A	675W7S	675W7A	6242
24	48”	720 lbs.	775W5S	775W5A	775W7S	775W7A	6242R
<b>36” Depth</b>							
36”	36”	690 lbs.	677-5S	677-5A	677-7S	677-7A	6234
36	36”	790 lbs.	777-5S	777-5A	777-7S	777-7A	6234R

Reflective white back and end panels are standard, regardless of shelf color  
 Add 1<sup>5/8</sup>” to nominal shelving row width to determine total row width.

A standard color chart is available at the beginning of each section with a more detailed one on page 126.

**V-Grip™ Wire Shelving - 700 lb. capacity per shelf**

Depth	Width	36"H with 2 shelves		48"H with 3 shelves		60"H with 4 shelves		72"H with 5 shelves		84"H with 6 shelves		96"H with 7 shelves		120"H with 9 shelves	
		Starter	Add-On	Starter	Add-On	Starter	Add-On	Starter	Add-On	Starter	Add-On	Starter	Add-On	Starter	Add-On
<b>12" Depth</b>															
12"	24"	4723-02S	4723-02A	4724-03S	4724-03A	4725-04S	4725-04A	4726-05S	4726-05A	4727-06S	4727-06A	4728-07S	4728-07A	4729-08S	4729-08A
12"	36"	4733-02S	4733-02A	4734-03S	4734-03A	4735-04S	4735-04A	4736-05S	4736-05A	4737-06S	4737-06A	4738-07S	4738-07A	4739-08S	4739-08A
12"	48"	4743-02S	4743-02A	4744-03S	4744-03A	4745-04S	4745-04A	4746-05S	4746-05A	4747-06S	4747-06A	4748-07S	4748-07A	4749-08S	4749-08A
12"	60"	4753-02S	4753-02A	4754-03S	4754-03A	4755-04S	4755-04A	4756-05S	4756-05A	4757-06S	4757-06A	4758-07S	4758-07A	4759-08S	4759-08A
12"	72"	4763-02S	4763-02A	4764-03S	4764-03A	4765-04S	4765-04A	4766-05S	4766-05A	4767-06S	4767-06A	4768-07S	4768-07A	4769-08S	4769-08A
<b>18" Depth</b>															
18"	24"	4523-02S	4523-02A	4524-03S	4524-03A	4525-04S	4525-04A	4526-05S	4526-05A	4527-06S	4527-06A	4528-07S	4528-07A	4529-08S	4529-08A
18"	36"	4533-02S	4533-02A	4534-03S	4534-03A	4535-04S	4535-04A	4536-05S	4536-05A	4537-06S	4537-06A	4538-07S	4538-07A	4539-08S	4539-08A
18"	48"	4543-02S	4543-02A	4544-03S	4544-03A	4545-04S	4545-04A	4546-05S	4546-05A	4547-06S	4547-06A	4548-07S	4548-07A	4549-08S	4549-08A
18"	60"	4553-02S	4553-02A	4554-03S	4554-03A	4555-04S	4555-04A	4556-05S	4556-05A	4557-06S	4557-06A	4558-07S	4558-07A	4559-08S	4559-08A
18"	72"	4563-02S	4563-02A	4564-03S	4564-03A	4565-04S	4565-04A	4566-05S	4566-05A	4567-06S	4567-06A	4568-07S	4568-07A	4569-08S	4569-08A
<b>24" Depth</b>															
24"	24"	4623-02S	4623-02A	4624-03S	4624-03A	4625-04S	4625-04A	4626-05S	4626-05A	4627-06S	4627-06A	4628-07S	4628-07A	4629-08S	4629-08A
24"	36"	4633-02S	4633-02A	4634-03S	4634-03A	4635-04S	4635-04A	4636-05S	4636-05A	4637-06S	4637-06A	4638-07S	4638-07A	4639-08S	4639-08A
24"	48"	4643-02S	4643-02A	4644-03S	4644-03A	4645-04S	4645-04A	4646-05S	4646-05A	4647-06S	4647-06A	4648-07S	4648-07A	4649-08S	4649-08A
24"	60"	4653-02S	4653-02A	4654-03S	4654-03A	4655-04S	4655-04A	4656-05S	4656-05A	4657-06S	4657-06A	4658-07S	4658-07A	4659-08S	4659-08A
24"	72"	4663-02S	4663-02A	4664-03S	4664-03A	4665-04S	4665-04A	4666-05S	4666-05A	4667-06S	4667-06A	4668-07S	4668-07A	4669-08S	4669-08A

**Extra wire shelves**

Depth	2' wide	3' wide	4' wide	5' wide	6' wide
12"	6062	6063	6064	6065	6066
18"	6072	6073	6074	6075	6076
24"	6082	6083	6084	6085	6086



Standard Color - Mirror silver. For other colors refer to Equipto color chart on page 126 or at the beginning of each section. \*Not shown to scale.

# V-Grip™ Shelving with Drawers

Combining modular drawers with V-Grip™ shelving optimizes flexibility by providing an ergonomic approach to storing a mix of small and bulk items. Placement of drawers between the knees and shoulders reduces the reaching and bending required of conventional storage cabinets, while providing space for bulk storage above and below drawers.

- 48 different drawer sizes
- 36" and 48" widths
- 18" and 24" depths
- Drawer heights from 3" to 13<sup>1</sup>/<sub>2</sub>"
- 200 and 400lb. drawer capacity
- Each drawer has individual rigid mounting brackets for 100% flexibility of drawer location
- Drawers available with or without divider sets
- Drawers include handles with integral plastic-covered label holder



Order drawer dividers to easily organize parts.

## GOLD ZONE

The same versatile V-Grip™ design that gives you the flexibility to add wire shelving and lockable cabinets can also be configured so that all your modular drawers are between your shoulders and knees, or "GOLD ZONE". Consequently, there's no squatting, stretching or straining to store and retrieve parts and tools.



Easily organize drawer contents.



**84”H Closed preconfigured units with drawers:**

Shown with optional wire shelf top.



**Drawers included: (1)-3”H, (1)-4 1/2”H, (1)-6”H & (1)-7 1/2”H**

Drawer Depth	Drawer Width	Capacity Per Drawer	Starter Part No.	Add-On Part No.
18”	36”	200 lbs.	4220VNS	4220VNA
	36”	400 lbs.	4220VHS	4220VHA
	48”	400 lbs.	4240VHS	4240VHA
24”	36”	200 lbs.	4230VNS	4230VNA
	36”	400 lbs.	4230VHS	4230VHA
	48”	400 lbs.	4250VHS	4250VHA

**Drawers included: (2)-4 1/2”H & (2)-6” H**

Drawer Depth	Drawer Width	Capacity Per Drawer	Starter Part No.	Add-On Part No.
18”	36”	200 lbs.	4221VNS	4221VNA
	36”	400 lbs.	4221VHS	4221VHA
	48”	400 lbs.	4241VHS	4241VHA
24”	36”	200 lbs.	4231VNS	4231VNA
	36”	400 lbs.	4231VHS	4231VHA
	48”	400 lbs.	4251VHS	4251VHA



**Drawers included: (2)-3”H, (1)-4 1/2”H & (1)-7 1/2”H**

Drawer Depth	Drawer Width	Capacity Per Drawer	Starter Part No.	Add-On Part No.
18”	36”	200 lbs.	4222VNS	4222VNA
	36”	400 lbs.	4222VHS	4222VHA
	48”	400 lbs.	4242VHS	4242VHA
24”	36”	200 lbs.	4232VNS	4232VNA
	36”	400 lbs.	4232VHS	4232VHA
	48”	400 lbs.	4252VHS	4252VHA

**Drawers included: (4)-4 1/2”H**

Drawer Depth	Drawer Width	Capacity Per Drawer	Starter Part No.	Add-On Part No.
18”	36”	200lb	4223VNS	4223VNA
	36”	400lb	4223VHS	4223VHA
	48”	400lb	4243VHS	4243VHA
24”	36”	200lb	4233VNS	4233VNA
	36”	400lb	4233VHS	4233VHA
	48”	400lb	4253VHS	4253VHA

\*All units come with 5 solid shelves. Optional wire shelf is shown in unit pictures.

For additional shelves please see page 13. No Divider Kits included, refer to page 14 and 15 for Divider Kit options.

A standard color chart is available at the beginning of each section with a more detailed one on page 126.

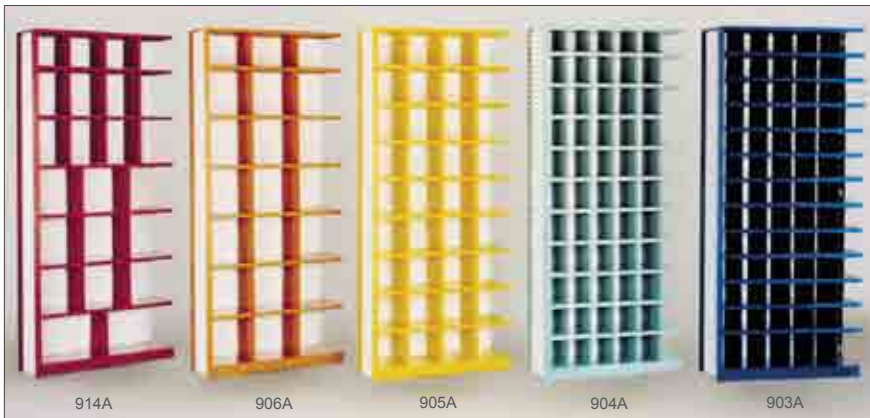
Shelving & Racks



# V-Grip™ Shelving Bin Units

23 Openings		21 Openings		36 Openings		66 Openings		78 Openings		
4-9"W x 9"H, 8-9"W x 12"H		18-12"W x 12"H		36-9"W x 9"H		60-6"W x 7 1/2"H		72-6"W x 6"H		
9-12"W x 12"H, 2-18"W x 12"H		3-12"W x 9"H				6-6"W x 9"H		6-6"W x 9"H		
Depth	Starter	Add-on	Starter	Add-on	Starter	Add-on	Starter	Add-on	Starter	Add-on
12"	914S	914A	906S	906A	905S	905A	904S	904A	903S	903A
18"	914DS	914DA	906DS	906DA	905DS	905DA	904DS	904DA	903DS	903DA
24"	914ES	914EA	906ES	906EA	905ES	905EA	904ES	904EA	903ES	903EA

All Units are 36" Wide and 84" in Height, for other available heights and widths contact Equipto.  
Clear height of bin opening is 1 1/2" less than nominal height shown.



- Simple clip and divider system creates efficient bin compartments.
- Match right size opening to your parts and supplies
- Add doors for cleanliness and security
- Use bin units back-to-back, form dividing walls, use near desks, machines or benches



36 openings		79 openings		92 openings		72 drawers		108 drawers	
9"W x 9"H		Assorted Sizes		Assorted Sizes		Drawers: 5 5/8"W x 3"H		5 5/8"W x 3"H	
		12 Drawers		24 Drawers		6 Bins: 18"W		(324 Compartments)	
		3 Compartments in each drawer		5 5/8"W x 3"H					

Depth	Starter	Add-on	Starter	Add-on	Starter	Add-on	Starter	Add-on	Starter	Add-on
12"	907S	907A	910S	910A	911S	911A	920S	920A	919S	919A
18"	907DS	907DA	910DS	910DA	911DS	911DA	920DS	920DA	919DS	919DA
24"	907ES	907EA	-	-	-	-	-	-	-	-

All Units are 36" Wide and 84" in Height, for other available heights and widths contact Equipto.  
Clear height of bin opening is 1 1/2" less than nominal height shown.

A standard color chart is available at the beginning of each section with a more detailed one on page 126.

## V-Grip™ X-Ray Shelving

84" high x 36" wide x 18" deep

Starter	Add-on	Extra divider
908D	908DA	8091

- Unit design provides smooth surfaces to eliminate torn or snagged file folders
- Unit includes 15 dividers
- V-Grip™ design allows easy addition of add-on sections



Shelving & Racks

# V-Grip™ Wire Shelving



Economy bulk wire rack shown

## Three Tier Bulk Rack with Wire Decking

Capacity per tier. 1100 lbs.

48" Wide Shelving					Additional Shelf	
Depth	Height	Starter Part No.	Add-on Part No.	Decking Part No.	Beam	*order 2
24"	60"	EW1005W42S	EW1005W42A	6100	9434	
24"	72"	EW1006W42S	EW1006W42A	6100	9434	
24"	84"	EW1007W42S	EW1007W42A	6100	9434	
36"	60"	EW1005W43S	EW1005W43A	6101	9434	
36"	72"	EW1006W43S	EW1006W43A	6101	9434	
36"	84"	EW1007W43S	EW1007W43A	6101	9434	
48"	60"	EW1005W44S	EW1005W44A	6109	9434	
48"	72"	EW1006W44S	EW1006W44A	6109	9434	
48"	84"	EW1007W44S	EW1007W44A	6109	9434	

60" Wide Shelving					Additional Shelf	
Depth	Height	Starter Part No.	Add-on Part No.	Decking Part No.	Beam	*order 2
36"	60"	EW1005W53S	EW1005W53A	6102	9435	
36"	72"	EW1006W53S	EW1006W53A	6102	9435	
36"	84"	EW1007W53S	EW1007W53A	6102	9435	
48"	60"	EW1005W54S	EW1005W54A	6110	9435	
48"	72"	EW1006W54S	EW1006W54A	6110	9435	
48"	84"	EW1007W54S	EW1007W54A	6110	9435	

96" Wide Shelving					Additional Shelf	
Depth	Height	Starter Part No.	Add-on Part No.	Decking Part No.	Beam	*order 2
24"	60"	EW1015W82S	EW1015W82A	6100	9448	
24"	72"	EW1016W82S	EW1016W82A	6100	9448	
24"	84"	EW1017W82S	EW1017W82A	6100	9448	
36"	60"	EW1015W83S	EW1015W83A	6101	9448	
36"	72"	EW1016W83S	EW1016W83A	6101	9448	
36"	84"	EW1017W83S	EW1017W83A	6101	9448	
48"	60"	EW1015W84S	EW1015W84A	6109	9448	
48"	72"	EW1016W84S	EW1016W84A	6109	9448	
48"	84"	EW1017W84S	EW1017W84A	6109	9448	

- High visibility for inventory inspection
- Increase overhead sprinkler effectiveness
- Eliminates dirt build-up
- Improves air circulation
- Expandable construction
- 2 wire trusses

## Three Level V-Grip™ Wire Rack

Capacity per tier. 1000 lbs.

48" Wide Shelving				Additional Shelf	
Depth	Height	Starter Part No.	Add-on Part No.	Decking Part No.	Truss *order 2
24"	60"	EW1524-05S	EW1524-05A	6100	9484
24"	72"	EW1524-06S	EW1524-06A	6100	9484
24"	84"	EW1524-07S	EW1524-07A	6100	9484
36"	60"	EW1534-05S	EW1534-05A	6101	9484
36"	72"	EW1534-06S	EW1534-06A	6101	9484
36"	84"	EW1534-07S	EW1534-07A	6101	9484
48"	60"	EW1544-05S	EW1544-05A	6109	9484
48"	72"	EW1544-06S	EW1544-06A	6109	9484
48"	84"	EW1544-07S	EW1544-07A	6109	9484

96" Wide Shelving				Additional Shelf	
Depth	Height	Starter Part No.	Add-on Part No.	Decking *order 2	Truss *order 2
24"	60"	EW1528-05S	EW1528-05A	6100	9488
24"	72"	EW1528-06S	EW1528-06A	6100	9488
24"	84"	EW1524-07S	EW1528-07A	6100	9488
36"	60"	EW1538-05S	EW1538-05A	6101	9488
36"	72"	EW1538-06S	EW1538-06A	6101	9488
36"	84"	EW1538-07S	EW1538-07A	6101	9488
48"	60"	EW1548-05S	EW1548-05A	6109	9488
48"	72"	EW1548-06S	EW1548-06A	6109	9488
48"	84"	EW1548-07S	EW1548-07A	6109	9488

## Four Level V-Grip™ Wire Rack

Capacity per tier. 1000 lbs.

48" Wide Shelving				Additional Shelf	
Depth	Height	Starter Part No.	Add-on Part No.	Decking Part No.	Truss *order 2
24"	96"	EW1524-08S	EW1524-08A	6100	9484
24"	120"	EW1524-10S	EW1524-10A	6100	9484
36"	96"	EW1534-08S	EW1534-08A	6101	9484
36"	120"	EW1534-10S	EW1534-10A	6101	9484
48"	96"	EW1544-08S	EW1544-08A	6109	9484
48"	120"	EW1544-10S	EW1544-10A	6109	9484

96" Wide Shelving				Additional Shelf	
Depth	Height	Starter Part No.	Add-on Part No.	Decking *order 2	Truss *order 2
24"	96"	EW1528-08S	EW1528-08A	6100	9488
24"	120"	EW1528-10S	EW1528-10A	6100	9488
36"	96"	EW1538-08S	EW1538-08A	6101	9488
36"	120"	EW1538-10S	EW1538-10A	6101	9488
48"	96"	EW1548-08S	EW1548-08A	6109	9488
48"	120"	EW1548-10S	EW1548-10A	6109	9488

## Four Tier Bulk Rack with Wire Decking

Capacity per tier. 1100 lbs.

48" Wide Shelving				Additional Shelf	
Depth	Height	Starter Part No.	Add-on Part No.	Decking Part No.	Beam *order 2
24"	96"	EW1008W42S	EW1008W42A	6100	9434
24"	120"	EW1010W42S	EW1010W42A	6100	9434
36"	96"	EW1008W43S	EW1008W43A	6101	9434
36"	120"	EW1010W43S	EW1010W43A	6101	9434
48"	96"	EW1008W44S	EW1008W44A	6109	9434
48"	120"	EW1010W44S	EW1010W44A	6109	9434

60" Wide Shelving				Additional Shelf	
Depth	Height	Starter Part No.	Add-on Part No.	Decking Part No.	Beam *order 2
36"	96"	EW1008W53S	EW1008W53A	6102	9435
36"	120"	EW1010W53S	EW1010W53A	6102	9435
48"	96"	EW1008W54S	EW1008W54A	6110	9435
48"	120"	EW1010W54S	EW1010W54A	6110	9435

96" Wide Shelving				Additional Shelf	
Depth	Height	Starter Part No.	Add-on Part No.	Decking *order 2	Beam *order 2
24"	96"	EW1018W82S	EW1018W82A	6100	9448
24"	120"	EW1020W82S	EW1020W82A	6100	9448
36"	96"	EW1018W83S	EW1018W83A	6101	9448
36"	120"	EW1020W83S	EW1020W83A	6101	9448
48"	96"	EW1018W84S	EW1018W84A	6109	9448
48"	120"	EW1020W84S	EW1020W84A	6109	9448

A standard color chart is available at the beginning of each section with a more detailed one on page 126.



# V-Grip™ Shelving Components

Designed and engineered for maximum interchangeability, V-Grip™ components carry the quality assurance that has made Equipto the leader in industrial shelving systems. All parts and accessories are designed and produced by Equipto to integrate and form a solid compression fit resulting in a storage system that is guaranteed to deliver years of reliable service.



## V-Grip™ shelving components

Structural Integrity comes from the integration of Equipto's exclusive V-Grip™ upright post and heavy-duty, compression-fit components.

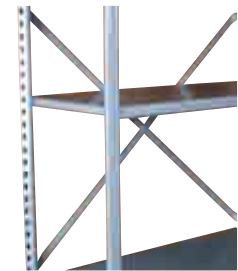
**When ordering V-Grip shelving by component, remember:**

- 1) To include 1 shelving end for each section of shelving and 1 shelving end to terminate each row.
- 2) Back sway braces and solid back panels can be shared between back-to-back units.
- 3) Closed shelving ends and solid back panels are finished in standard reflective white paint to enhance visibility in parts storage areas.
- 4) V-Grip™ shelves are heavy duty, 18-gauge steel and are provided with 4 corner clip reinforcements per shelf, which provide a friction fit to V-Grip™ upright posts.
- 5) To link back to back shelves use 10381 clamps.
- 6) Consult Customer Service if you are in a seismic zone.

### Upright posts (15/8" Wide)

Description	Part No.
36" High	5003
42" High	5035
48" High	5004
54" High	5031
60" High	5005
72" High	5006
78" High	5022
84" High	5007
90" High	5023
96" High	5008
108" High	5009
120" High	5010
144" High	5012
180" High*	5015

\*Posts over 144"H are spliced



### Back sway braces

Description	Part No.
24" Back, pair	6418
36" Back, pair	6416
42" Back, pair	6419
48" Back, pair	6417

1 Req. up to 8 ft. / 2 Req. 9-15 ft.

**Back and end panels are available in other colors.**

### Open shelving ends (D X H)

Description	Part No.
12" x 84" Open	6702
18" x 84" Open	6712
24" x 84" Open	6722
36" x 84" Open	6732
12" x 96" Open	6703
18" x 96" Open	6713
24" x 96" Open	6723
36" x 96" Open	6733
12" x 120" Open	6705
18" x 120" Open	6715
24" x 120" Open	6725
36" x 120" Open	6735
12" x 144" Open	6741
18" x 144" Open	6747
24" x 144" Open	6753
36" x 144" Open	6759
12" x 180" Open	6743
18" x 180" Open	6749
24" x 180" Open	6755
36" x 180" Open	6761
12" x 180" Closed	6746

84" and 96" high Open Shelving Ends come with 2 upright posts and 2 end brace plates.

### Closed shelving ends (D X H)

Description	Part No.
12" x 84" Closed	6707
18" x 84" Closed	6717
24" x 84" Closed	6727
36" x 84" Closed	6737
12" x 96" Closed	6708
18" x 96" Closed	6718
24" x 96" Closed	6728
36" x 96" Closed	6738
12" x 120" Closed	6710
18" x 120" Closed	6720
24" x 120" Closed	6730
36" x 120" Closed	6740
12" x 144" Closed	6744
18" x 144" Closed	6750
24" x 144" Closed	6756
36" x 144" Closed	6762
12" x 180" Closed	6746
18" x 180" Closed	6752
24" x 180" Closed	6758
36" x 180" Closed	6764

84" high Closed Shelving Ends come with 2 upright posts and 2 end panels. 96" high Closed Shelving Ends come with 2 upright posts and 3 end panels.

• Standard reflective white



### Solid back panels (W X H)

Standard reflective white

Description	Part No.
24" x 42 <sup>3</sup> / <sub>4</sub> " High	7590
24" x 43" – 84"	7590-2
24" x 85" – 126"	7590-3
24" x 127" – 168"	7590-4
24" x 169" – 210"	7590-5
36" x 35 <sup>1</sup> / <sub>4</sub> " High	7588-36
36" x 42" High	7588
36" x 41 <sup>1</sup> / <sub>4</sub> " High*	810436-5
36" x 84" High or less	7588-2
36" x over 84" (to 120")	7588-3
36" x 126" to 168"	7588-4
36" x 168" to 210"	7588-5
42" x 42" High	7585
48" x 35 <sup>1</sup> / <sub>4</sub> " High	7589-36
48" x 42" High	7589
48" x 41 <sup>1</sup> / <sub>4</sub> " High*	810448-7
48" x 84" High or less	7589-2
48" x over 84" (to 120")	7589-3
48" x 126" to 168"	7589-4
48" x 168" to 210"	7589-5

\*For use with 42" uprights

Shelving & Racks

**V-Grip™ shelving components**

Equipto's exclusive Wire Shelf design combines wire truss supports with a heavy-duty waterfall shelf to provide:

- Increased visibility of items on upper shelves
- Better flow of air, light, & sprinklers
- Capacity equal to heavy-duty 18 gauge solid steel shelves
- Shelves are 1 1/4" thick



When using wire shelves in a closed-back shelving configuration, an additional back panel spacer and longer bolt is required to maintain clearance between the panel and the wire shelf.

Plastic spacer PN: 13219S  
Truss head bolt, 10-24 x 1 3/4" PN: 13135  
(one of each per back panel bracket)

**Wire shelves-truss included**  
(D X W) Standard color - Mirror Silver

Description	Part No.
12" x 24"	6062
12" x 36"	6063
12" x 48"	6064
12" x 60"	6065
12" x 72"	6066
18" x 24"	6072
18" x 36"	6073
18" x 48"	6074
18" x 60"	6075
18" x 72"	6076
24" x 24"	6082
24" x 36"	6083
24" x 48"	6084
24" x 60"	6085
24" x 72"	6086

**Wire back grids (W x H)**

Description	Part No.
36" x 36"	7556
48" x 36"	7557
60" x 36"	7558
72" x 36"	7559
96" x 36"	7560
36" x 48"	7561
48" x 48"	7562
60" x 48"	7563
72" x 48"	7564
96" x 48"	7566



Wire grids are reflective white

**Wire end grids (H x D)**

Description	Part No.
36" x 12"	6780-03
36" x 18"	6781-03
36" x 24"	6782-03
36" x 36"	6783-03
36" x 48"	6784-03
48" x 12"	6795-04
48" x 18"	6791-04
48" x 24"	6792-04
48" x 36"	6793-04
48" x 48"	6794-04



Wire grids are reflective white

**Heavy duty 18 ga solid shelves (D x W) 1 1/4" high**

Description	Part No.	(4) Shelf clips included
12" x 24"	6202	
12" x 36"	6230	
12" x 42"	6250	
12" x 48"	6240	
15" x 36"	6229	
15" x 48"	6239	
18" x 24"	6203	
18" x 36"	6231	
18" x 42"	6251	
18" x 48"	6241	
24" x 24"	6204	
24" x 36"	6232	
24" x 42"	6252	
24" x 48"	6242	
36" x 36"	6234	
36" x 48"	6244	



**End brace plates**

Description	Part No.
12" End, pair	6412
15" End, pair	6411
18" End, pair	6413
24" End, pair	6414
30" End, pair	6406
36" End, pair	6415
48" End, pair	6410

For shelving up to 9' high, 2 pairs of plates are required.  
For shelving 9' to 12' high, a total of 3 pairs are required. For 13' high and above, 4 pairs are required.

**Reinforced heavy duty solid shelves**

12" x 36"	6230R
12" x 48"	6240R
18" x 36"	6231R
18" x 48"	6241R
24" x 36"	6232R
24" x 48"	6242R
36" x 36"	6234R

Includes front and rear reinforcing bars.  
Recommended for bottom 2 shelves on units over 8'.

**Center reinforcements 16 ga**

36" Channel	10051
48" Channel	10052

**Reinforcements R - 13 ga**

36" Front/RearEnd	10093
42" Front or Rear	9952
48" Front or Rear	10094
12" End	9630
18" End	9631
24" End	9632



**Finishing end panels**

Description (D x H)	Part No.
12" x 84"	7917-12
15" x 84"	7917-15
18" x 84"	7917-18
24" x 84"	7917-24
30" x 84"	7917-30

Flush fit to V-Grip.

Row end covers all holes.

Does not eliminate requirement for sway brace.

Finishes off the end of a unit with an attractive solid panel.

Standard color is reflective white regardless of shelf color

**Wire deck shelf panel**

12" x 24"	6002
12" x 36"	6003
18" x 24"	6012
18" x 36"	6013
24" x 24"	6042
24" x 36"	6043

**Wire shelf truss**

24"	9472
36"	9473
48"	9474
60"	9475
72"	9476

**Solid end panels (D x H)**

Description	Part No.
12" x 42 3/4"	6796
12" x 84" or less	6796-2
12" x over 84" (to 120")	6796-3
12" x 126" to 168"	6796-4
12" x 168" to 210"	6796-5
15" x 42 3/4"	810515
18" x 41 1/4"*	810518-4
18" x 42 3/4"	6797
18" x 84" or less	6797-2
18" x over 84" (to 120")	6797-3
18" x 126" to 168"	6797-4
18" x 168" to 210"	6797-5
24" x 33 3/4"	6799
24" x 36"	6799-36
24" x 41 1/4"*	810524-5
24" x 42 3/4"	6798
24" x 84" or less	6798-2
24" x over 84" (to 120")	6798-3
24" x 126" to 168"	6798-4
24" x 168" to 210"	6798-5
30" x 42 3/4"	810530
36" x 42 3/4"	6800
36" x 84" or less	6800-2
36" x over 84" (to 120")	6800-3
36" x 126" to 168"	6800-4
36" x 168" to 210"	6800-5

\*For use with 42" upright

Does not include upright posts.

Standard color is reflective white regardless of shelf color



**Pull out reference shelves (D x W)**

Description	Part No.
12" x 36"	6230RFS
12" x 48"	6240RFS
24" x 36"	6232RFS
24" x 48"	6242RFS

**400lb. V-Grip Roll-out Shelves**

Description	Part No.
24" x 36"	821131
24" x 48"	821137

**Front bases (W x H)**

Description	Part No.
25/8" x 36"	6803
4 1/8" x 36"	6804
25/8" x 42"	010136
25/8" x 48"	6805
4 1/8" x 42"	6807
4 1/8" x 48"	6806

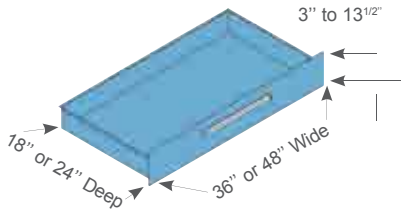
**Bin fronts**

Description	Part No.
1 1/2" x 48" Bin Front	10515
1 1/2" x 36" Bin Front	10514
1 1/2" x 48" Bin Front	10515
3 1/4" x 36" Bin Front	10516
3 1/4" x 48" Bin Front	10517

Standard installation of V-Grip shelving drawers leaves a 1/4" space between drawer and the shelf directly above. To close this gap, select the appropriate filler strip:"  
For 36"W drawers: 7702 For 48"W drawers: 7702-48

**Modular Drawers**

Maximize density with modular drawers for V-Grip



- 100% drawer extension
- 36 and 48 inch widths; 18 and 24 inch depths
- 200 and 400 lb. capacity



Modular Drawers in V-Grip Shelving

Depth (Front to Rear)	Height of Drawer Front	Inside Height	36" Wide 200 lb. Capacity	36" Wide 400 lb. Capacity	48" Wide 400 lb. Capacity
18"	3"	2"	8603N	8603H	8661H
	4 1/2"	3 1/2"	8604N	8604H	8662H
	6"	5"	8605N	8605H	8663H
	7 1/2"	6 1/2"	8606N	8606H	8664H
	9"	8"	8601N	8601H	8665H
	10 1/2"	9 1/2"	8602N	8602H	8666H
	12"	11"	8607N	8607H	8667H
	13 1/2"	12"	8608N	8608H	8668H
24"	3"	2"	8610N	8610H	8671H
	4 1/2"	3 1/2"	8611N	8611H	8672H
	6"	5"	8612N	8612H	8673H
	7 1/2"	6 1/2"	8613N	8613H	8674H
	9"	8"	8615N	8615H	8675H
	10 1/2"	9 1/2"	8616N	8616H	8676H
	12"	11"	8614N	8614H	8677H
	13 1/2"	12"	8617N	8617H	8678H

Note: All Drawer part numbers listed above do not include dividers.

**Important ordering considerations:**

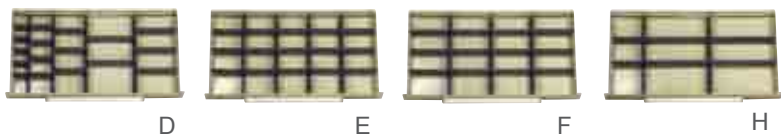
- A shelf should be positioned above each group of drawers
- **Do not exceed 36" vertical spacing of continuous drawers**
- Handles include label holder, plastic cover strip and end caps
- Inside clear width: 36" - 31 7/8" / 48" - 43 1/4"
- Inside clear depth: 18" - 16 5/16" / 24" - 22 5/16"

**Divider kits - 36" wide**

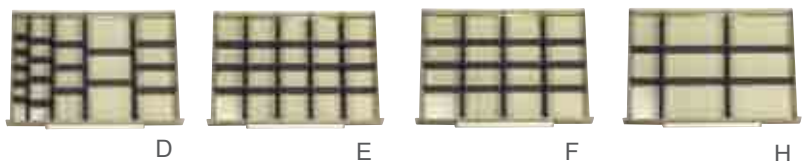
Width	For Drawer Height	Divider Set	18" Deep Divider Kit	24" Deep Divider Kit
36"	3"	D	4173D10	4183D10
	3"	E	4173E10	4183E10
	3"	F	4173F10	4183F10
	3"	H	4173H10	4183H10
	4 1/2"	D	4174D15	4184D15
	4 1/2"	E	4174E15	4184E15
	4 1/2"	F	4174F15	4184F15
	4 1/2"	H	4174H15	4184H15
	6" and up	D	4175D20	4185D20
	6" and up	E	4175E20	4185E20
	6" and up	F	4175F20	4185F20
	6" and up	H	4175H20	

4185H20

**18" Deep**



**24" Deep**



**Important ordering considerations:**

- When selecting divider kits select the correct height of partitions and dividers for specific drawers being ordered
- All dividers are smooth office gray in color

A standard color chart is available at the beginning of each section with a more detailed one on page 126.

**Divider kits - 48" wide**

Width	For Drawer Height	Divider Set	18" Deep Divider Kit	24" Deep Divider Kit
48"	3"	D	4176D10	4186D10
	3"	E	4176E10	4186E10
	3"	F	4176F10	4186F10
	3"	H	4176H10	4186H10
	4 1/2"	D	4177D15	4187D15
	4 1/2"	E	4177E15	4187E15
	4 1/2"	F	4177F15	4187F15
	4 1/2"	H	4177H15	4187H15
	6" and up	D	4178D20	4188D20
	6" and up	E	4178E20	4188E20
	6" and up	F	4178F20	4188F20
	6" and up	H	4178H20	4188H20

**Hinged double doors for V-Grip™ shelving**

- Rigid door and frame assembly, sturdy hinges, 3-point latches
- Attaches quickly and easily to V-Grip™ shelving units



**Doors for shelving (W x H)**

Description	Part No.
36" x 42"	18043
36" x 34 1/2"	18036*
36" x 42"	18043*
36" x 72"	18035-72
36" x 78"	18035-78*
36" x 84"	18035*
42" x 84"	44979A
48" x 84"	18435
48" x 42"	18443
48" x 34 1/4"	18436
48" x 34 1/2"	18436*
48" x 42"	18443*
48" x 72"	18435-72
48" x 78"	18435-78*
48" x 84"	18435*

\*For these doors, add QV to the end of the part number for Quick View doors. Lock and Key included.



6620



6615/6613

**Label holders**

Description (H x W)	Part No.
1 1/8" x 34" Label Holder	6615
1 1/8" x 46" Label Holder	6613
1" x 6" Plastic (for wire only)	6620

**Full height shelf dividers**

(H x D)

Description	Part No.
2" x 12"	8049
4 1/2" x 12"	8018
6" x 12"	8019
7 1/2" x 12"	8020
9" x 12"	8021
10 1/2" x 12"	8022
12" x 12"	8023
13 1/2" x 12"	8024
15" x 12"	8025
16 1/2" x 12"	8026
2" x 18"	8093
4 1/2" x 18"	8090
6" x 18"	8094
7 1/2" x 18"	8095
9" x 18"	8096
10 1/2" x 18"	8097
12" x 18"	8098
13 1/2" x 18"	8099
15" x 18"	810313
16 1/2" x 18"	8091
18" x 18"	8092
6" x 24"	8119
7 1/2" x 24"	8120
9" x 24"	8121
10 1/2" x 24"	8122
12" x 24"	8123
13 1/2" x 24"	8124
15" x 24"	8125
16 1/2" x 24"	8126
10 1/2" x 36"	8133
12" x 36"	8134
Speediclip	10226

(Speediclip holds shelf dividers to shelves above and below.)

**18" Deep**



**24" Deep**



**Important ordering considerations:**

- When selecting divider kits select the correct height of partitions and dividers for specific drawers being ordered
- All dividers are smooth office gray in color



Close the top of any V-Grip Bulk Rack upright. Easy to attach - simply tap its triangular base into the upright. May also be used as floor glide to protect all floors. Made of high-impact plastic, it will withstand any load within the capacity of the upright itself.

**Top/bottom cap**

Description	Part No.
Top or Bottom Cap/White	10177W
Top or Bottom Cap/Black	10177B



Ribbed and slotted partitions fit easily into drawers, running the full depth of the drawer from front-to-back. Adjustable in 3/4" increments, they may be used alone, or with dividers. Metal screws are supplied for fastening to drawer bottoms.

**Partitions**

Partition Height	To Fit Drawer Height	To Fit 18" Deep Drawers	To Fit 24" Deep Drawers
2"	3"	8780N	8790N
3"	4 1/2"	8781N	8791N
4 1/2"	6" and up	8782N	

8792N All partitions are smooth office gray in color



To further expand the possibilities in creating your own drawer design, we offer a variety of individual dividers. Use them with front-to-back partitions to make compartments of all sizes. Spaces across drawers; each 3/4" wide  
36" wide drawers — 40 spaces  
48" wide drawers — 53 spaces

**Individual dividers**

Divider Width	Spaces	For 3" High Drawers	For 4 1/2" High Drawers	For 6" High Drawers and Up
3 3/32"	4	8834	8844	8854
4 11/16"	6	8835	8845	8855
6 9/32"	8	8836	8846	8856
7 7/8"	10	8837	8847	8857
9 7/16"	12	8838	8848	8858
12 11/16"	16	8839	8849	8859

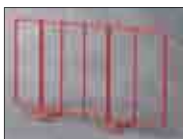
- All dividers are smooth office gray in color

A standard color chart is available at the beginning of each section with a more detailed one on page 126.



**Sliding dividers (H x D)**

Description	Part No.
2 <sup>3</sup> / <sub>4</sub> " x 12"	8110
4 <sup>1</sup> / <sub>2</sub> " x 12"	8111
5 <sup>3</sup> / <sub>4</sub> " x 12"	8112
7 <sup>1</sup> / <sub>4</sub> " x 12"	8113
2 <sup>3</sup> / <sub>4</sub> " x 18"	8103
4 <sup>1</sup> / <sub>2</sub> " x 18"	8104
5 <sup>3</sup> / <sub>4</sub> " x 18"	8105
7 <sup>1</sup> / <sub>4</sub> " x 18"	8106
2 <sup>3</sup> / <sub>4</sub> " x 24"	8114
4 <sup>1</sup> / <sub>2</sub> " x 24"	8115
5 <sup>3</sup> / <sub>4</sub> " x 24"	8116
7 <sup>1</sup> / <sub>4</sub> " x 24"	8117



**Wire dividers for wire shelves (H x D)**

Description	Part No.
9" x 18"	8101
9" x 24"	8102



**Plastic containers (W x D x H)**

Color	Part No.
White (11" x 22 <sup>3</sup> / <sub>4</sub> " x 7")	8501W
Yellow (11" x 22 <sup>3</sup> / <sub>4</sub> " x 7")	8501Y
Blue (11" x 22 <sup>3</sup> / <sub>4</sub> " x 7")	8501B
Clear (11" x 22 <sup>3</sup> / <sub>4</sub> " x 7")	8501C
Red (11" x 22 <sup>3</sup> / <sub>4</sub> " x 7")	8501R
Black (11" x 22 <sup>3</sup> / <sub>4</sub> " x 7")	8501BLK
Container Lid (11" x 22 <sup>3</sup> / <sub>4</sub> " x 7")	8502
(3 Across fits 36" wide shelf)	
White (8 <sup>1</sup> / <sub>4</sub> " x 22 <sup>3</sup> / <sub>4</sub> " x 6")	8512W
Yellow (8 <sup>1</sup> / <sub>4</sub> " x 22 <sup>3</sup> / <sub>4</sub> " x 6")	8512Y
Blue (8 <sup>1</sup> / <sub>4</sub> " x 22 <sup>3</sup> / <sub>4</sub> " x 6")	8512B
(4 Across fits 36" wide shelf)	

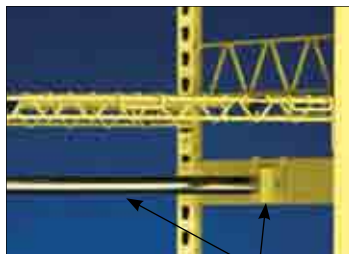


Add mobility to any V-Grip™ steel or wire shelving or rack 18" or more deep. capacity 800 lbs. per unit.

**Mobile Perimeter base (Add 6" to height)**

Depth	36" wide	48" wide	60" wide	72" wide	96" wide	Handles
18"	4699C13	4699C14	4699C15	4699C16	4699C18	18"D 11580
24"	4699C23	4699C24	4699C25	4699C26	4699C28	24"D 11581
30"	4699C03	4699C04	4699C05	4699C06	4699C08	
36"	4699C33	4699C34	4699C35	4699C36	4699C38	
48"	4699C43	4699C44	4699C45	4699C46	4699C48	

Note: Includes 2 swivel and 2 stationary heavy duty casters. when ordering V-Grip™ uprights with mobile base, add suffix "TU" after part number for upright. Ex: 5005TU. Not recommended over 66"H.



Hanger bar & bracket

**Hanger bar and bracket**

(Includes rod, brackets and one support channel) (D x W)

Description	Part No.
12" x 36"	9753-12
12" x 48"	9754-12
18" x 36"	9753-18
18" x 48"	9754-18
24" x 36"	9753-24
24" x 48"	9754-24
36" x 36"	9753-36
36" x 48"	9754-36

Order one end support channel to each section to finish row.

12" deep	7731
18" deep	7732
24" deep	7733
36" deep	7734

Note: 150 lb. cap. distributed load.

**Splicer**



Description	Part No.
To splice 2 V-Grip posts	5568
For Bulk Rack above V-Grip shelving	5568BS
For Bulk Rack above Bulk Rack	5566



10381 - Common upright clamp  
13037 - Dart clip

**Miscellaneous parts**

Description	Part No.
Common upright clamp	10381
Corner reinforcement clip	7680
Back panel bracket for closed shelving	10388
Bolt and nut (3/16" x 1/4")	13001
Bolt and nut (3/16" x 3/8")	13000
Panel clip	10332
Speedy clip	10226
Upright splicer	5568
Corner bracket L.H.	7698L
Corner bracket R.H.	7698R
Flush bracket, L.H.	7700L
Flush bracket, R.H.	7700R
Back-to-back bracket for wire shelving	7750
V-grip floor plates	9826
#Rod (3/16" x 79")	9705
#Rod (3/16" x 85")	9720
Aisle safety rail, 3'	10043V
Aisle safety rail, 4'	10044V
Floor anchor L.H.	7695L
Floor anchor R.H.	7695R
Dart clip for beams	13037
Dart clip for label holder	13041
Aisle bracket L.H.	7693L
Aisle bracket R.H.	7693R
Foot/leveler	13149
V-grip™ top mount bracket, left	7692L
V-grip™ top mount bracket, right	7692R
18" D handle (white)	11580
24" D handle (white)	11581
30" D handle (white)	811030
36" D handle (white)	44080-03

**Seismic accessories**

Description	Part No.
Back panel bracket, pair	190301U
Back brace, pair, 36"	190302U
Back brace, pair, 42"	190308U
Back brace, pair, 48"	190303U
Back brace, pair, 96"	190309U
End sway brace, pair, 12"	190304U
End sway brace, pair, 18"	190305U
End sway brace, pair, 24"	190306U
End sway brace, pair, 36"	190307U
Floor anchor-center	190317A
Floor anchor (left hand)	190319A
Floor anchor (right hand)	190320A
Shelf locking clip	10231

**Double entry beams (2 required)**

Description	Part No.
24" Long	811724A
36" Long	9403
48" Long	9404



**Brackets** (flush front 7700 L & R and corner 7698 L & R) allow easy attachment of catwalks to V-Grip™ uprights.



Floor anchor fastens shelving to floor for increased stability. order no. **7695L** (left hand) or no. **7695R** (right hand). Seismic floor anchor (center) **190317A**.



# V-Grip™ Versarack

- Versarack provides the reliability and flexibility of the V-Grip™ upright post and the choice of particle board, wire, or steel deck shelves.
- Fast and easy assembly.
- Ideal for bulk parts, archival records, and back room storage applications.
- Versarack offers easy assembly and clear spans for double-entry units.



Shelf reinforcements provide additional capacity for particleboard and wire shelf applications.



Low profile shelf beams are 1 1/2" high and adjustable on 1 1/2" centers.



Shelf beams have a 2-point wedge lock connection for maximum rigidity.



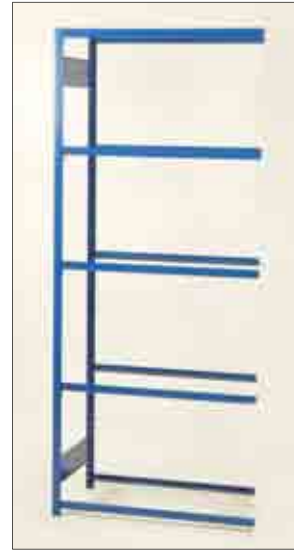
**V-Grip™ Versarack - Preconfigured Units**

**Decking:** second “.” in catalog number designates no decking. Substitute “P” for particle board decking, “D” for corrugated steel decking, or “W” for wire decking.

**Side and back panels are not available with Versarack**



Starter



Add-on



Starter with particle board decking



Starter with corrugated steel decking



Starter with wire decking

**Versarack™ (84” high units) 5 Shelves**

Width	Depth	Starter	Add-on
<b>36” Width</b>			
12”		VVR-361284-5S	VVR-361284-5A
15”		VVR-361584-5S	VVR-361584-5A
18”		VVR-361884-5S	VVR-361884-5A
24”		VVR-362484-5S	VVR-362484-5A
30”		VVR-363084-5S	VVR-363084-5A
36”		VVR-363684-5S	VVR-363684-5A
<b>42” Width</b>			
12”		VVR-421284-5S	VVR-421284-5A
15”		VVR-421584-5S	VVR-421584-5A
18”		VVR-421884-5S	VVR-421884-5A
24”		VVR-422484-5S	VVR-422484-5A
30”		VVR-423084-5S	VVR-423084-5A
36”		VVR-423684-5S	VVR-423684-5A
<b>48” Width</b>			
12”		VVR-481284-5S	VVR-481284-5A
15”		VVR-481584-5S	VVR-481584-5A
18”		VVR-481884-5S	VVR-481884-5A
24”		VVR-482484-5S	VVR-482484-5A
30”		VVR-483084-5S	VVR-483084-5A
36”		VVR-483684-5S	VVR-483684-5A

**Note: must also order decking.**

**Shelving & Racks**

**V-Grip™ Versarack - Components to achieve maximum capacities**



**Shelf beams**

Description	capacity	Part No.
36” Wide	890 lbs.	VVR-B36
42” Wide	720 lbs.	VVR-B42
48” Wide	550 lbs.	VVR-B48

Order 2 shelf beams for each shelf.  
\*Uniform distributed load



**Shelf reinforcements**

(front to back)	
Description	Part No.
15” Deep	VVR-R15
18” Deep	VVR-R18
24” Deep	VVR-R24
30” Deep	VVR-R30
36” Deep	VVR-R36

Although reinforcements are optional, when storing heavy loads, 3 per shelf are recommended on shelf depths of 24”, 30”, 36”



**End brace plates**

Description	Part No.
12” End, pair	6412
15” End, pair	6411
18” End, pair	6413
24” End, pair	6414
30” End, pair	6406
36” End, pair	6415
48” End, pair	6410

A standard color chart is available at the beginning of each section with a more detailed one on page 126.

**V-Grip™ VersaRack - Components**



**Particle board shelves (5/8" thick)**  
(W x D)

Description	Part No.
36" x 12"	VVR-P3612
36" x 15"	VVR-P3615
36" x 18"	VVR-P3618
36" x 24"	VVR-P3624
36" x 30"	VVR-P3630
36" x 36"	VVR-P3636
42" x 12"	VVR-P4212
42" x 15"	VVR-P4215
42" x 18"	VVR-P4218
42" x 24"	VVR-P4224
42" x 30"	VVR-P4230
42" x 36"	VVR-P4236
48" x 12"	VVR-P4812
48" x 15"	VVR-P4815
48" x 18"	VVR-P4818
48" x 24"	VVR-P4824
48" x 30"	VVR-P4830
48" x 36"	VVR-P4836

shelf beams not included.  
see page 18 for shelf beams.



**Corrugated steel shelves**  
(W x D)

Description	Part No.
36" x 12"	VVR-D3612
36" x 15"	VVR-D3615
36" x 18"	VVR-D3618
36" x 24"	VVR-D3624
36" x 30"	VVR-D3630
36" x 36"	VVR-D3636
42" x 12"	VVR-D4212
42" x 15"	VVR-D4215
42" x 18"	VVR-D4218
42" x 24"	VVR-D4224
42" x 30"	VVR-D4230
42" x 36"	VVR-D4236
48" x 12"	VVR-D4812
48" x 15"	VVR-D4815
48" x 18"	VVR-D4818
48" x 24"	VVR-D4824
48" x 30"	VVR-D4830
48" x 36"	VVR-D4836

shelf beams not included.  
see page 18 for shelf beams.



**Wire shelves**  
(W x D)

Description	Part No.
36" x 12"	VVR-W3612
36" x 15"	VVR-W3615
36" x 18"	VVR-W3618
36" x 24"	VVR-W3624
36" x 30"	VVR-W3630
36" x 36"	VVR-W3636
42" x 12"	VVR-W4212
42" x 15"	VVR-W4215
42" x 18"	VVR-W4218
42" x 24"	VVR-W4224
42" x 30"	VVR-W4230
42" x 36"	VVR-W4236
48" x 12"	VVR-W4812
48" x 15"	VVR-W4815
48" x 18"	VVR-W4818
48" x 24"	VVR-W4824
48" x 30"	VVR-W4830
48" x 36"	VVR-W4836

shelf beams not included.  
see page 18 for shelf beams.

Shelving & Racks



**Open shelving ends (D x H)**

Description	Part No.
12" x 84" Open	6702
18" x 84" Open	6712
24" x 84" Open	6722
36" x 84" Open	6732
12" x 96" Open	6703
18" x 96" Open	6713
24" x 96" Open	6723
36" x 96" Open	6733
12" x 120" Open	6705
18" x 120" Open	6715
24" x 120" Open	6725
36" x 120" Open	6735
12" x 144" Open	6741
18" x 144" Open	6747
24" x 144" Open	6753
36" x 144" Open	6759
12" x 180" Open	6743
18" x 180" Open	6749
24" x 180" Open	6755
36" x 180" Open	6761

84" and 96" high open shelving ends come with 2 upright posts and 2 end brace plates.



**Closed shelving ends (D x H)**

Description	Part No.
12" x 84" Closed	6707
18" x 84" Closed	6717
24" x 84" Closed	6727
36" x 84" Closed	6737
12" x 96" Closed	6708
18" x 96" Closed	6718
24" x 96" Closed	6728
36" x 96" Closed	6738
12" x 120" Closed	6710
18" x 120" Closed	6720
24" x 120" Closed	6730
36" x 120" Closed	6740
12" x 144" Closed	6744
18" x 144" Closed	6750
24" x 144" Closed	6756
36" x 144" Closed	6762
12" x 180" Closed	6746
18" x 180" Closed	6752
24" x 180" Closed	6758
36" x 180" Closed	6764

84" high closed shelving ends come with 2 upright posts and 2 end panels.

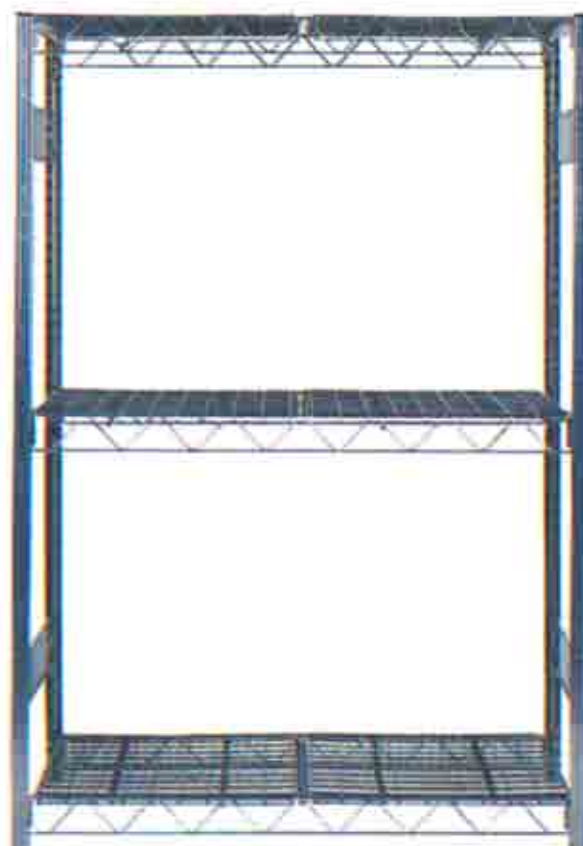
96" high closed shelving ends come with 2 upright posts and 3 end panels.

Standard color is white regardless of shelf color

A standard color chart is available at the beginning of each section with a more detailed one on page 126.

# V-Grip™ Wire Rack

V-Grip Wire Racks provide the ideal solution when storing medium to heavy loads in an environment where air and light flow are important. Wire trusses provide 3-point rigid connection with V-Grip upright post for maximum rigidity without use of sway braces for a cleaner look and easier installation.



Wire Rack

## V-Grip™ Wire Rack Components

### Wire rack truss beam (W x H)

Description	Part No.
48" x 3 1/4"	9484
72" x 3 1/2"	9486
96" x 4 1/4"	9488

### Wire rack deck grid (W x D) (fits over wire truss or solid beam)

Description	Part No.
24" x 24"	6092
24" x 36"	6093
24" x 48"	6094

Shelving & Racks

### Three shelf wire racks

	Depth	Height	48" Wide		72" Wide		96" Wide		Extra shelf	
			Starter	Add-on	Starter	Add-on	Starter	Add-on		
1,500 lbs. per shelf	24"	60"	1524-05S	1524-05A	1526-05S	1526-05A	1528-05S	1528-05A	24" D x 48" W	6092-02
		72"	1524-06S	1524-06A	1526-06S	1526-06A	1528-06S	1528-06A	24" D x 72" W	6092-03
		84"	1524-07S	1524-07A	1526-07S	1526-07A	1528-07S	1528-07A	24" D x 96" W	6092-04
36"	60"	60"	1534-05S	1534-05A	1536-05S	1536-05A	1538-05S	1538-05A	36" D x 48" W	6093-02
		72"	1534-06S	1534-06A	1536-06S	1536-06A	1538-06S	1538-06A	36" D x 72" W	6093-03
		84"	1534-07S	1534-07A	1536-07S	1536-07A	1538-07S	1538-07A	36" D x 96" W	6093-04
48"	60"	60"	1544-05S	1544-05A	1546-05S	1546-05A	1548-05S	1548-05A	48" D x 48" W	6094-02
		72"	1544-06S	1544-06A	1546-06S	1546-06A	1548-06S	1548-06A	48" D x 72" W	6094-03
		84"	1544-07S	1544-07A	1546-07S	1546-07A	1548-07S	1548-07A	48" D x 96" W	6094-04

Shelves are adjustable on 1 1/2" Centers. Features Wire Shelves and Wire Trusses.

### Four shelf wire racks

	Depth	Height	48" Wide		72" Wide		96" Wide		Extra shelf	
			Starter	Add-on	Starter	Add-on	Starter	Add-on		
1,500 lbs. per shelf	24"	96"	1524-08S	1524-08A	1526-08S	1526-08A	1528-08S	1528-08A	24" D x 48" W	6092-02
		120"	1524-10S	1524-10A	1526-10S	1526-10A	1528-10S	1528-10A	24" D x 72" W	6092-03
		36"	96"	1534-08S	1534-08A	1536-08S	1536-08A	1538-08S	1538-08A	24" D x 96" W
36"	120"	96"	1534-10S	1534-10A	1536-10S	1536-10A	1538-10S	1538-10A	36" D x 48" W	6093-02
		96"	1544-08S	1544-08A	1546-08S	1546-08A	1548-08S	1548-08A	36" D x 72" W	6093-03
		120"	1544-10S	1544-10A	1546-10S	1546-10A	1548-10S	1548-10A	36" D x 96" W	6093-04
48"	96"	96"	1544-08S	1544-08A	1546-08S	1546-08A	1548-08S	1548-08A	48" D x 48" W	6094-02
		120"	1544-10S	1544-10A	1546-10S	1546-10A	1548-10S	1548-10A	48" D x 72" W	6094-03
		120"	1544-10S	1544-10A	1546-10S	1546-10A	1548-10S	1548-10A	48" D x 96" W	6094-04

Shelves are adjustable on 1 1/2" Centers. Features Wire Shelves and Wire Trusses.

A standard color chart is available at the beginning of each section with a more detailed one on page 126.

# V-Grip™ Bulk Rack

V-Grip Bulk Rack is designed to accommodate longer spans and heavier loads than conventional shelving. Bulk Rack beams engage V-Grip upright posts providing a rigid connection. Bulk Rack levels are designed to carry load capacities from 1500 lbs. to 3000 lbs. per level, depending on beam span length and deck material used.

The unit to the right is shown with wire decking for the top shelf and corrugated steel decking unit bottom shelf.



## Three level bulk rack with decking

Depth	Height	48" Wide		60" Wide		72" Wide		96" Wide	
		Starter	Add-on	Starter	Add-on	Starter	Add-on	Starter	Add-on
<b>Standard duty (from 1100 lbs. to 1500 lbs. For specific capacities see chart on page 26)</b>									
15"	60"	1005D41S	1005D41A	1005D51S	1005D51A	1005D61S	1005D61A	—	—
	72"	1006D41S	1006D41A	1006D51S	1006D51A	1006D61S	1006D61A	—	—
24"	60"	1005D42S	1005D42A	1005D52S	1005D52A	1005D62S	1005D62A	—	—
	72"	1006D42S	1006D42A	1006D52S	1006D52A	1006D62S	1006D62A	—	—
30"	60"	1007D42S	1007D42A	1007D52S	1007D52A	1007D62S	1007D62A	—	—
	72"	1006D40S	1006D40A	1006D50S	1006D50A	1006D60S	1006D60A	—	—
36"	60"	1005D43S	1005D43A	1005D53S	1005D53A	1005D63S	1005D63A	—	—
	72"	1006D43S	1006D43A	1006D53S	1006D53A	1006D63S	1006D63A	—	—
48"	60"	1007D43S	1007D43A	1007D53S	1007D53A	1007D63S	1007D63A	—	—
	72"	1005D44S	1005D44A	1005D54S	1005D54A	1005D64S	1005D64A	—	—
	72"	1006D44S	1006D44A	1006D54S	1006D54A	1006D64S	1006D64A	—	—
	84"	1007D44S	1007D44A	1007D54S	1007D54A	1007D64S	1007D64A	—	—
<b>Medium duty (from 1500 lbs. to 2000 lbs. For specific capacities see chart on page 26)</b>									
15"	60"	1015D41S	1015D41A	1015D51S	1015D51A	1015D61S	1015D61A	1015D81S	1015D81A
	72"	1016D41S	1016D41A	1016D51S	1016D51A	1016D61S	1016D61A	1016D81S	1016D81A
24"	60"	1015D42S	1015D42A	1015D52S	1015D52A	1015D62S	1015D62A	1015D82S	1015D82A
	72"	1016D42S	1016D42A	1016D52S	1016D52A	1016D62S	1016D62A	1016D82S	1016D82A
30"	60"	1017D42S	1017D42A	1017D52S	1017D52A	1017D62S	1017D62A	1017D82S	1017D82A
	72"	1015D40S	1015D40A	1015D50S	1015D50A	1015D60S	1015D60A	1015D80S	1015D80A
36"	60"	1016D40S	1016D40A	1016D50S	1016D50A	1016D60S	1016D60A	1016D80S	1016D80A
	72"	1017D40S	1017D40A	1017D50S	1017D50A	1017D60S	1017D60A	1017D80S	1017D80A
48"	60"	1015D43S	1015D43A	1015D53S	1015D53A	1015D63S	1015D63A	1015D83S	1015D83A
	72"	1016D43S	1016D43A	1016D53S	1016D53A	1016D63S	1016D63A	1016D83S	1016D83A
	72"	1017D43S	1017D43A	1017D53S	1017D53A	1017D63S	1017D63A	1017D83S	1017D83A
	84"	1015D44S	1015D44A	1015D54S	1015D54A	1015D64S	1015D64A	1015D84S	1015D84A
	72"	1016D44S	1016D44A	1016D54S	1016D54A	1016D64S	1016D64A	1016D84S	1016D84A
	84"	1017D44S	1017D44A	1017D54S	1017D54A	1017D64S	1017D64A	1017D84S	1017D84A
<b>Heavy duty (over 2000 lbs. For specific capacities see chart on page 26)</b>									
15"	60"	1025D41S	1025D41A	1025D51S	1025D51A	1025D61S	1025D61A	1025D81S	1025D81A
	72"	1026D41S	1026D41A	1026D51S	1026D51A	1026D61S	1026D61A	1026D81S	1026D81A
24"	60"	1025D42S	1025D42A	1025D52S	1025D52A	1025D62S	1025D62A	1025D82S	1025D82A
	72"	1026D42S	1026D42A	1026D52S	1026D52A	1026D62S	1026D62A	1026D82S	1026D82A
30"	60"	1027D42S	1027D42A	1027D52S	1027D52A	1027D62S	1027D62A	1027D82S	1027D82A
	72"	1025D40S	1025D40A	1025D50S	1025D50A	1025D60S	1025D60A	1025D80S	1025D80A
36"	60"	1026D40S	1026D40A	1026D50S	1026D50A	1026D60S	1026D60A	1026D80S	1026D80A
	72"	1027D40S	1027D40A	1027D50S	1027D50A	1027D60S	1027D60A	1027D80S	1027D80A
48"	60"	1025D43S	1025D43A	1025D53S	1025D53A	1025D63S	1025D63A	1025D83S	1025D83A
	72"	1026D43S	1026D43A	1026D53S	1026D53A	1026D63S	1026D63A	1026D83S	1026D83A
	72"	1027D43S	1027D43A	1027D53S	1027D53A	1027D63S	1027D63A	1027D83S	1027D83A
	84"	1025D44S	1025D44A	1025D54S	1025D54A	1025D64S	1025D64A	1025D84S	1025D84A
	72"	1026D44S	1026D44A	1026D54S	1026D54A	1026D64S	1026D64A	1026D84S	1026D84A
	84"	1027D44S	1027D44A	1027D54S	1027D54A	1027D64S	1027D64A	1027D84S	1027D84A

**DECKING:** "D" in catalog number represents corrugated steel decking. Substitute "W" for drop in wire decking (available in 24", 36", & 48" depths) or "-" for no decking.

A standard color chart is available at the beginning of each section with a more detailed one on page 126.

**Four level bulk rack with solid decking**

Depth	Height	48" Wide		60" Wide		72" Wide		96" Wide	
		Starter	Add-on	Starter	Add-on	Starter	Add-on	Starter	Add-on
<b>Standard duty (from 1100 lbs. to 1500 lbs. For specific capacities see chart on page 23)</b>									
24"	96"	1008D42S	1008D42A	1008D52S	1008D52A	1008D62S	1008D62A	—	—
	120"	1010D42S	1010D42A	1010D52S	1010D52A	1010D62S	1010D62A	—	—
30"	96"	1008D40S	1008D40A	1008D50S	1008D50A	1008D60S	1008D60A	—	—
	120"	1010D40S	1010D40A	1010D50S	1010D50A	1010D60S	1010D60A	—	—
36"	96"	1008D43S	1008D43A	1008D53S	1008D53A	1008D63S	1008D63A	—	—
	120"	1010D43S	1010D43A	1010D53S	1010D53A	1010D63S	1010D63A	—	—
48"	96"	1008D44S	1008D44A	1008D54S	1008D54A	1008D64S	1008D64A	—	—
	120"	1010D44S	1010D44A	1010D54S	1010D54A	1010D64S	1010D64A	—	—

<b>Medium duty (from 1500 lbs. to 2000 lbs. For specific capacities see chart on page 23)</b>									
24"	96"	1018D42S	1018D42A	1018D52S	1018D52A	1018D62S	1018D62A	1018D82S	1018D82A
	120"	1020D42S	1020D42A	1020D52S	1020D52A	1020D62S	1020D62A	1020D82S	1020D82A
30"	96"	1018D40S	1018D40A	1018D50S	1018D50A	1018D60S	1018D60A	1018D80S	1018D80A
	120"	1020D40S	1020D40A	1020D50S	1020D50A	1020D60S	1020D60A	1020D80S	1020D80A
36"	96"	1018D43S	1018D43A	1018D53S	1018D53A	1018D63S	1018D63A	1018D83S	1018D83A
	120"	1020D43S	1020D43A	1020D53S	1020D53A	1020D63S	1020D63A	1020D83S	1020D83A
48"	96"	1018D44S	1018D44A	1018D54S	1018D54A	1018D64S	1018D64A	1018D84S	1018D84A
	120"	1020D44S	1020D44A	1020D54S	1020D54A	1020D64S	1020D64A	1020D84S	1020D84A

<b>Heavy duty (over 2000 lbs. For specific capacities see chart on page 23)</b>									
24"	96"	1028D42S	1028D42A	1028D52S	1028D52A	1028D62S	1028D62A	1028D82S	1028D82A
	120"	1030D42S	1030D42A	1030D52S	1030D52A	1030D62S	1030D62A	1030D82S	1030D82A
30"	96"	1028D40S	1028D40A	1028D50S	1028D50A	1028D60S	1028D60A	1028D80S	1028D80A
	120"	1030D40S	1030D40A	1030D50S	1030D50A	1030D60S	1030D60A	1030D80S	1030D80A
36"	96"	1028D43S	1028D43A	1028D53S	1028D53A	1028D63S	1028D63A	1028D83S	1028D83A
	120"	1030D43S	1030D43A	1030D53S	1030D53A	1030D63S	1030D63A	1030D83S	1030D83A
48"	96"	1028D44S	1028D44A	1028D54S	1028D54A	1028D64S	1028D64A	1028D84S	1028D84A
	120"	1030D44S	1030D44A	1030D54S	1030D54A	1030D64S	1030D64A	1030D84S	1030D84A

**Five level bulk rack with solid decking**

Depth	Height	48" Wide		60" wide		72" wide		96" wide	
		Starter	Add-on	Starter	Add-on	Starter	Add-on	Starter	Add-on
<b>Standard duty (from 1100 lbs. to 1500 lbs. For specific capacities see chart on page 26)</b>									
36"	180"	1012D43S	1012D43A	1012D53S	1012D53A	1012D63S	1012D63A	—	—
48"	180"	1012 D44S	1012D44A	1012D54S	1012D54A	1012D64S	1012D64A	—	—

<b>Medium duty (from 1500 lbs. to 2000 lbs. For specific capacities see chart on page 26)</b>									
36"	180"	1022D43S	1022D43A	1022D53S	1022D53A	1022D63S	1022D63A	1022D83S	1022D83A
48"	180"	1022D44S	1022D44A	1022D54S	1022D54A	1022D64S	1022D64A	1022D84S	1022D84A

DECKING: "D" in Catalog number represents Corrugated Steel Decking. Substitute "W" for drop in Wire Decking or "-" for no decking.

**Bulk Rack shelving options**



**Solid beams**

- 3 lugs on each beam connector locks securely to post
- Adjusts on 1 1/2" centers



**Drop In Wire decking**

- Capacity to 2667 lbs.**
- Lets air, light and water pass through
  - Offset between beam and wire shelving is .2625+/- or just over 1/4"



**Solid shelf**

- Capacity to 2763 lbs.**
- Solid corrugated steel
  - Versatile: Use ridge side up or flat channeled surface

A standard color chart is available at the beginning of each section with a more detailed one on page 126.

**Bulk Rack load capacities**



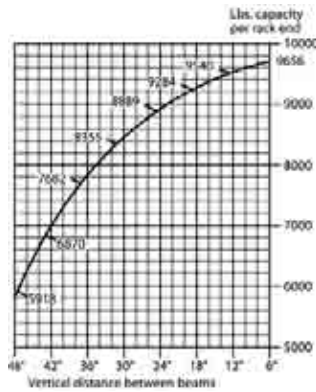
**Load Capacities of drop in wire grid decking (for solid beams)**

Length	Depth of rack	Capacity(lbs.)	Part No.
4'	24"	1500	16324W
5'	24"	1500	16325W
6'	24"	2250	16326W
8'	24"	3000	16328W
4'	36"	1500	16334W
5'	36"	1500	16335W
6'	36"	2250	16336W
8'	36"	3000	16338W
4'	48"	1500	16344W
5'	48"	1500	16345W
6'	48"	2250	16346W
8'	48"	3000	16348W

Note: To determine shelf level capacity with decking, use beam or decking capacity, whichever is less.

**Rack Capacities**

Rack end capacity is not a factor under most circumstances. However, if you intend to space beam levels unusually far apart, check your plan to insure that the cumulative load on the lower portions of each rack end is within the limits shown on this chart. Rack ends are designed with a safety factor of 1.92. Horizontal beams are designed with a safety factor of 1.65.



**Load Capacities of V-Grip Bulk Rack solid beams**

**Light Duty\***

Width	Beam Height	Capacity(lbs.)	Part No.
4'	25/8"	1460	9434
5'	25/8"	1208	9435
6'	25/8"	1163	9436

**Medium Duty\***

Width	Beam Height	Capacity(lbs.)	Part No.
4'	27/8"	2112	9444
5'	27/8"	1690	9445
6'	27/8"	1622	9446
7'	33/4"	1557	830284M
8'	33/4"	1557	9448

**Heavy Duty\***

Width	Beam Height	Capacity(lbs.)	Part No.
4'	31/2"	3454	9454
5'	31/2"	2763	9455
6'	31/2"	2630	9456
7'	33/4"	2667	830284H
8'	33/4"	2667	9458

\*Capacities are in lbs. per pair of beams

**Load Capacities of solid steel decking (for solid beams)**

Length	Depth of rack	Capacity(lbs.)	Part No.
4'	15"	2407	16314
5'	15"	3003	16315
6'	15"	3611	16316
8'	15"	4815	16318
4'	24"	1852	16324
5'	24"	2310	16325
6'	24"	2778	16326
8'	24"	3704	16328
4'	30"	1435	16354
5'	30"	1794	16355
6'	30"	2152	16356
8'	30"	2870	16358
4'	36"	1196	16334
5'	36"	1495	16335
6'	36"	1794	16336
8'	36"	2392	16338
4'	48"	1192	16344
5'	48"	1490	16345
6'	48"	1788	16346
8'	48"	2384	16348

Note: To determine shelf level capacity with decking, use beam or decking capacity, whichever is less.

A standard color chart is available at the beginning of each section with a more detailed one on page 126.

**V-Grip™ Bulk Rack shelving components**

Designed with versatility to fit your needs

- Accessories to expand units higher
- Ability to mix rack with shelving
- Built-in capability for future expansion
- Plywood or other decking supplied by user: 5/8" thick

**Rack Accessories**

Description	Part No.
Clamp for fastening units back-to-back; 2 needed per pair of frames	10381
Dart clip for locking down beams — 2 needed	13037
Plastic label holder fits V-Grip wire	6620

**Solid Decking Panels**

Width	15" Deep	24" Deep	30" Deep	36" Deep	48" Deep
24"	16018	16002	16019	16003	16004
30"	16020	16022	16021	16023	16024



**Label Holder**

A neat and easy way to identify records or supplies.  
Part No. 6620.

**Splicer for Bulk rack**

Permits stacking V-Grip bulk rack units for multi-level space.  
Part No. 5566

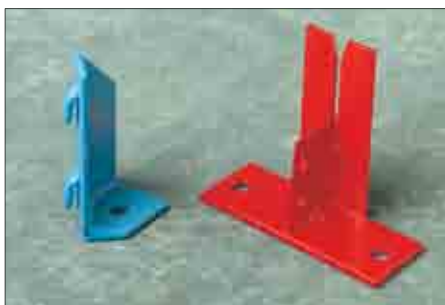


**Rack Ends**

Depth	5' High	6' High	7' High	8' High	10' High	12' High	15' High
	Part No.	Part No.	Part No.	Part No.	Part No.	Part No.	Part No.
15"	9304	9309	9314	9319	9329	—	9345
24"	9301	9306	9311	9316	9326	9332	9342
30"	9305	9310	9315	9320	9330	—	9346
36"	9302	9307	9312	9317	9327	9333	9343
48"	9303	9308	9313	9318	9328	9334	9344

**Floor Anchors** (one for each post)

Fasten racks to floor for increased stability.  
(Must be used when bottom beam is more than 12" from floor.)  
7695 L&R (190317A for Seismic)



7695 L&R

190317A

**Rack Ends with nutserts for mounting to caster base**

Depth	5' High	6' High
24"	9301TU	9306TU
30"	—	9310TU
36"	9302TU	9307TU

Perimeter caster base (pg.16).

**Tie Bars for solid beams and Steel and Wire Decking**

Depth	Part No.	Depth	Part No.
15"	6521	24"	9420
24"	6522	30"	830815
30"	6525	36"	9421
36"	6523	48"	9422
48"	6524		

Order 1 per pair of 4' or 5' beams; 2 per pair of 6' or 8' beams.



**Tie Bars for Particle Board Decking**



Close the top of any V-Grip Bulk Rack upright. Easy to attach - simply tap its triangular base into the upright. May also be used as floor glide to protect all floors. Made of high-impact plastic, it will withstand any load within the capacity of the upright itself.

**Top/bottom cap**

Description	Part No.
Top or Bottom Cap/White	10177W
Top or Bottom Cap/Black	10177B

**Foot Plate**

Fits under uprights to protect linoleum or wood floors, or to act as shim on uneven floors.  
Part No. 9826

**Flush Front and Corner Brackets**

Attach catwalks to racks.



7698 L&R

7700 L&R



A standard color chart is available at the beginning of each section with a more detailed one on page 126.



# V-Grip™ Tire Rack

V-Grip Tire Racks provide a flexible and economical tire storage system. Tire Racks are available in various heights in either a stationary or mobile configuration. Support beams provide a rigid 3-point connection to V-Grip upright post and are adjustable on 1 1/2" centers to accommodate a variety of tire sizes.

## Tire racks

- Racks assemble quickly and adjust with a minimum number of tools
- Beams adjust up or down on 1 1/2" centers
- Brackets furnished for back-to-back or against the wall use



Tire racks are adjustable for all passenger car sizes of tires and rims. If you require shelving to fit truck tires please contact Equipto.

### Racks hold 7 to 10 tires Each level 15"D x 60"W

All equipment assembles as shown, with cross beams locking into uprights. Beams are adjustable on 1 1/2" centers. All tire racks are furnished with brackets which may be used to anchor to wall or back-to-back. Floor anchors are provided for all starter units.

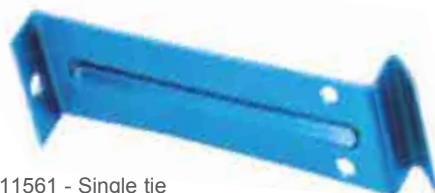
### Beam-to-Post Connection

Strong, V-Grip uprights with tapered slots accept 3 lugs on each beam end to lock post to beam firmly, without fasteners.



### Separator wall tie

This flange is to be used for bolting brackets back-to-back or for mounting to a wall (hardware for mounting to wall by others).



11561 - Single tie  
11562 - Set of two

4 Tier (120" H)



3 Tier (84" H)



806-52S Starter  
806-52A Add-on

806-32S Starter  
806-32A Add-on

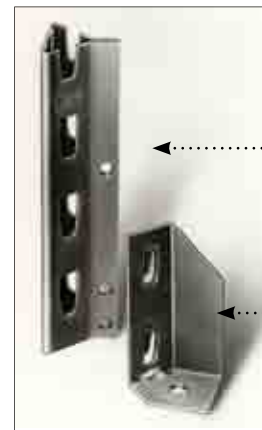
Includes wall tie and floor anchor



### Mobile Tire Rack

18"D x 60"W x 67"H  
2 tier with casters / Part No. 806-52MOB

### Floor anchor



Upright

Floor anchor  
R.H & L.H.

A standard color chart is available at the beginning of each section with a more detailed one on page 126.

# Zip-In Shelving

Equipto's Zip-In shelving is the ideal solution when there is frequent change in the size of items being stored and the ability to easily change the vertical clear opening of each shelf location is a prerequisite. Zip-In shelves simply slide in and out of the unit without unloading or removing adjacent shelves.

Shelving & Racks



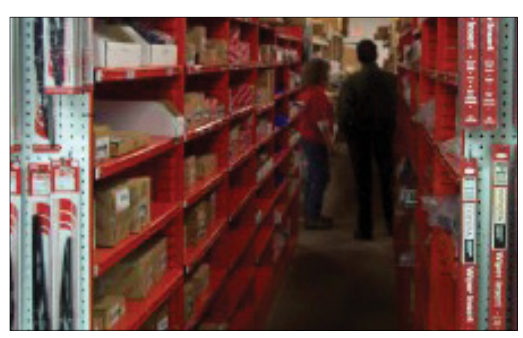
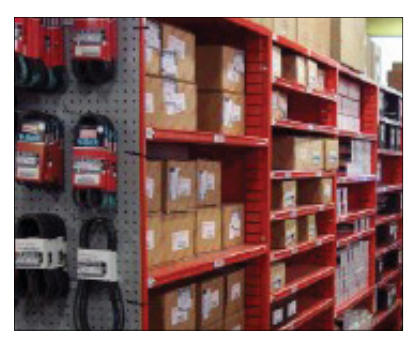
Zip-In shelving units provide adjustability of shelves on 1 1/2" centers.



Zip-In shelves adjust easily by sliding shelves in and out of the system.



Sliding dividers attach easily without hardware or fasteners and provide infinite adjustability left to right.



A standard color chart is available at the beginning of each section with a more detailed one on page 126.

**Zip-In preconfigured units**



Part No. 3020



Part No. 3022



Part No. 3010



Part No. 3012  
shown with 27 openings

**Zip-In units**

(All units are 84" high x 37<sup>1</sup>/<sub>8</sub>" wide x 12" deep)

Part No.	Description
3020	With back: Shell only - order parts from list
3022	With back; 9 openings, 9" high
3010	With back; 21 bins: 18 - 12" x 12"; 3-9" x 12"
3012	With back; up to 36 openings, 9" x 9"

**Zip-In components**

(All units are 84" high x 37<sup>1</sup>/<sub>8</sub>" wide x 12" deep)

Part No.	Description
6098	Shelf 36" wide
6098L	Shelf 36" wide, with label holder
10047	Shelf front channel reinforcement
8145	Divider 3" high for opening 4 <sup>1</sup> / <sub>2</sub> " or higher
8146	Divider 4 <sup>1</sup> / <sub>2</sub> " high for opening 6" or higher
8147	Divider 6" high for opening 9" or higher
8505	Drawer 5 <sup>5</sup> / <sub>8</sub> " x 3 <sup>1</sup> / <sub>8</sub> "
8720	Drawer straight divider

\*6098(L) will carry 242 lb. evenly distributed load

**Supports to use when supporting deckover platforms over Zip-In Shelving**

Part No.	Description
41327-01	Vertical support 87" high painted
41327-02	Corner support 87" high painted
41327-03	Vertical support 96" high painted
41327-04	Corner support 96" high painted



**Equipto Label Holder**

is a neat and easy way to identify records or supplies.

Part No. 6615



**Sliding divider**

Hooks into shelf holes and snap-locks into place on 1" centers without interfering with label holders.



**Shelf drawer**

6 across fills Zip-In Shelf. Order drawer divider separately. Part No. 8505

A standard color chart is available at the beginning of each section with a more detailed one on page 126.

# Iron Grip® Shelving

**The heavier the load the tighter the grip!**

Equipto Iron Grip® features the strongest, most resourceful system.

- Quick shelf placement without tools; just a simple, solid steel stud at every shelf corner.
- Independent unit concept is engineered for strength, and is infinitely adjustable for custom fitting to your specific needs.
- Iron Grip shelving provides superior strength for heavy applications
- Add drawers, dividers, bin fronts, bases or doors for your specific applications
- The largest upright anywhere, with a heavy gauge stud in each shelf corner which locks a double thickness of metal together
- Stud grip increases as additional weight is added to shelf

**Heights:** Iron Grip shelving units come in 84" height, 38<sup>5</sup>/<sub>8</sub>", 43<sup>1</sup>/<sub>8</sub>", 60", 72", 96", 120" and 180" high units are also available. Any other heights by special order.

Specify desired height; we'll provide a prompt quotation.

**PLEASE NOTE: This shelving is not interchangeable with V-Grip.**



Shelving & Racks

Superior Iron Grip strength automatically provides crucial 4-point reinforcement to shelves.

The tapered stud engages a sloped, key-shaped hole in the upright for instant binding strength.

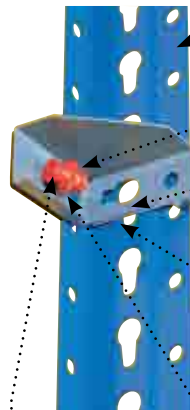
Built to last. Studs are plated; other parts have oven-baked enamel surfaces, and all formed from prime rolled steel.



Durable 18-gauge shelves feature box-formed edges on all four sides. Adding 13-gauge, U-formed channels (3/8" x 13/32") provides extra strength reinforcement on heavily loaded shelves. For heaviest use, also add end and center channels. Angles (1" x 1") made of 1/8" thick carbon steel provide optional reinforcement at the ends.

### High visibility panels

Equipto furnishes high visibility white back and end panels on Iron Grip shelving units, regardless of the color of other. Standard color on Iron Grip shelving is office gray with white panels. Optional decorator colors will also be shipped with white panels unless you specify otherwise.



Part No. 10392

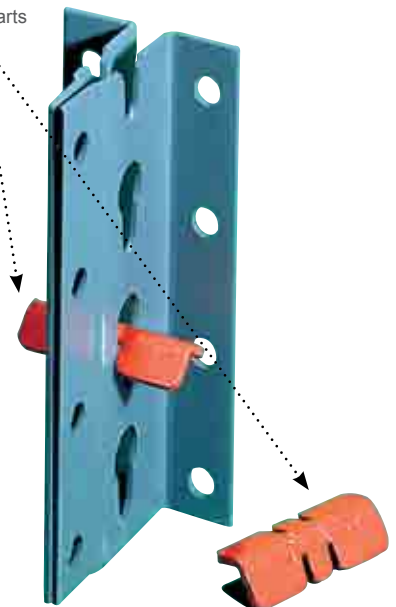
- 1" x 2<sup>3</sup>/<sub>8</sub>" uprights (13 gauge), are the largest anywhere. Side embossing adds even more strength and rigidity to the unit
- Iron Grip shelf studs allow adjustment of shelves instantly on 1<sup>1</sup>/<sub>2</sub>" centers
- Front and rear shelf flanges extend around the sides past keyhole. Steel stud binds both flanges to upright
- Dividers adjust on 1" centers with Speedy clips on 36" wide shelving (3" centers on 48" widths)

Shown in color for clarity, parts are actually zinc plated

### Iron grip key

Fasten any two shelving units together quickly and easily. Easy-access keys remove just as simply, allowing rearrangement of any unit without disturbing adjacent units  
U.S. patent No. 2,824,775

Use Iron Grip shelving in a variety of configurations: free-standing; side-by-side; back-to-back; or arranged in efficient work centers. Each shelf unit has four uprights.



Part No. 10394



- Reinforced shelf capacities up to 2000 lbs. per shelf
- Non-reinforced shelf capacities of 700 lbs. per 36" W shelf
- Remarkable Iron Grip strength
- Modular system allows quick adjustment of individual shelves as well as units
- Largest, sturdiest upright anywhere
- As the shelves are loaded, the unit strength increases
- Reflective white back and end panels are standard, regardless of shelf color

**Closed Shelving Units**

Note: Starter unit has 2 closed ends; additional unit has 1 closed end.

Depth	Starting or Additional Unit	6 Shelves Avg. 16 1/2" c.c.	10 Shelves Avg. 9" c.c.	Extra Shelf
12"	Starter	70-6KD	70-10KD	6091
12"	Add-on	71-6KD	71-10KD	6091
18"	Starter	72-6KD	72-10KD	6150
18"	Add-on	73-6KD	73-10KD	6150
24"	Starter	74-6KD	74-10KD	6185
24"	Add-on	75-6KD	75-10KD	6185
36"	Starter	76-6KD	76-10KD	6260
36"	Add-on	77-6KD	77-10KD	6260

To order set-up (extra charge), change "KD" suffix to "SU".

**Open Shelving Units**

Depth	6 Shelves Avg. 16 1/2" c.c.	10 Shelves Avg. 9" c.c.	Extra Shelf
12"	60-6KD	60-10KD	6091
18"	62-6KD	62-10KD	6150
24"	64-6KD	64-10KD	6185
36"	66-6KD	66-10KD	6260

**Width:** All units in table are 3' wide. To order 4' widths (in any depth except 36"), substitute "W" for "-" in catalog number. Example: 60-6 is 3' wide; 60W6 is 4' wide.

**Height:** All units in table are 7' high. Units available in all additional heights listed in "Uprights" section on Page 33.

To order set-up (extra charge), change "KD" suffix to "SU".



Closed back and end



Open shelf

A standard color chart is available at the beginning of each section with a more detailed one on page 126.

# Iron Grip® Shelving

Preconfigured units

- Units are supplied with white back and end panels
- Keep bulk and individual parts in the same unit for better inventory control
- Add lockable swinging doors for extra protection and security
- Quiet Ride™ Drawers feature 200 lbs. per drawer capacity
- Heavy duty 400 pound capacity drawer available
- All drawers extend 100%
- All preassembled units are 36" wide and 84" high
- Combine shelving and drawers in one unit



4203/4210



4204/4211



4205/4212



4206/4213



4207/4214



4208D

Shelving & Racks

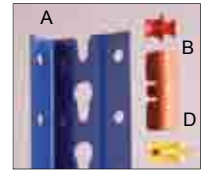
Unit Description	Part Numbers			
	18" Deep w/o Dividers	18" Deep w/ Dividers	24" Deep w/o Dividers	24" Deep w/ Dividers
12 drawers 3" high, 4 shelf openings 12" high	4203N	4203DN	4210N	4210DN
8 drawers 4 1/2" high, 4 shelf openings 12" high	4204N	4204DN	4211N	4211DN
6 drawers 6" high, 4 shelf openings 12" high	4205N	4205DN	4212N	4212DN
5 drawers 7 1/2" high, 4 shelf openings 12" high	4206N	4206DN	4213N	4213DN
3 drawers 12" high, 4 shelf openings 12" high	4207N	4207DN	4214N	4214DN
2 drawers 3" high, 2 drawers 4 1/2" high	4208N	4208DN	4215N	4215DN
2 drawers 6" high, 1 drawer 7 1/2" high				
3 shelf openings 15" high				

Doors for these units available on page 33. Note: Above units feature Quiet-Ride™ 200 pound capacity drawers. **To order 400 lb capacity Heavy-Duty drawers, substitute "H" for "N" in Part No.**

Handles are furnished the same color as the drawer and all units have reflective white back and side panels.

A standard color chart is available at the beginning of each section with a more detailed one on page 126.

**Components**



Drawers in a variety of widths and heights, with or without dividers, are available. (see drawer section.)

Iron Grip components: (A) Upright; (B) Shelf Stud; (D) Unit Key

Equipto's commitment to quality control and fast turnaround service assures reliable assistance to our customers in replacing, adapting or expanding Iron Grip shelving systems. Our complete line of dependable parts is your guide to achieving complete flexibility in your space utilization system.

**Back panels** (reflective white)

Description	Part No.
36" x 43 <sup>1</sup> / <sub>2</sub> " high	7506
36" x 7 <sup>1</sup> / <sub>2</sub> " or less	7506-2
36" x 7 <sup>3</sup> / <sub>8</sub> " to 10 <sup>1</sup> / <sub>2</sub> "	7506-3
48" x 43 <sup>1</sup> / <sub>2</sub> " high	7531
48" x 7 <sup>1</sup> / <sub>2</sub> " or less	7531-2
48" x 7 <sup>1</sup> / <sub>2</sub> " to 10 <sup>1</sup> / <sub>2</sub> "	7531-3

**Dividers** (standard color is smooth office gray)

Description	Part No.
2" x 12" deep	8049
4 <sup>1</sup> / <sub>2</sub> " x 12" deep	8018
6" x 12" deep	8019
7 <sup>1</sup> / <sub>2</sub> " x 12" deep	8020
9" x 12" deep	8021
10 <sup>1</sup> / <sub>2</sub> " x 12" deep	8022
12" x 12" deep	8023
13 <sup>1</sup> / <sub>2</sub> " x 12" deep	8024
15" x 12" deep	8025
16 <sup>1</sup> / <sub>2</sub> " x 12" deep	8026
4 <sup>1</sup> / <sub>2</sub> " x 18" deep	8090
6" x 18" deep	8094
7 <sup>1</sup> / <sub>2</sub> " x 18" deep	8095
9" x 18" deep	8096
10 <sup>1</sup> / <sub>2</sub> " x 18" deep	8097
12" x 18" deep	8098
13 <sup>1</sup> / <sub>2</sub> " x 18" deep	8099
16 <sup>1</sup> / <sub>2</sub> " x 18" deep	8091
18" x 18" deep	8092
6" x 24" deep	8119
7 <sup>1</sup> / <sub>2</sub> " x 24" deep	8120
18" x 18" deep	8092
9" x 24" deep	8121
10 <sup>1</sup> / <sub>2</sub> " x 24" deep	8122
12" x 24" deep	8123
13 <sup>1</sup> / <sub>2</sub> " x 24" deep	8124
15" x 24" deep	8125
16 <sup>1</sup> / <sub>2</sub> " x 24" deep	8126
10 <sup>1</sup> / <sub>2</sub> " x 36" deep	8133
12" x 36" deep	8134

**Miscellaneous parts and hardware**

Description	Part No.
Shelf stud	10392
Unit key	10394
Speedy clip	10226
Bolt & nut 3/16" x 3/8"	13000
Bolt & nut 3/16" x 1/4"	13001
Bolt & nut 1/4" x 1/2"	13002
Bolt & nut 1/4" x 1"	13003
Headed rod 3/16" x 85"	9720
Panel clip	10332
Corner brace	6420
Wide drawer filler strip	7702
Aisle safety rail 36"	10043G
Aisle safety rail 48"	10044G
Front seismic anchor	190330A
Common back anchor	190335A

**Sway braces (pair)**

Description	Part No.
36" Back, 50 <sup>1</sup> / <sub>8</sub> " CC	6499
48" Back, 67 <sup>3</sup> / <sub>16</sub> " CC	6431
12" End, 13 <sup>5</sup> / <sub>32</sub> " CC	6480
18" End, 25 <sup>3</sup> / <sub>16</sub> " CC	6481
24" End, 33 <sup>9</sup> / <sub>16</sub> " CC	6482
36" End, 48 <sup>1</sup> / <sub>8</sub> " CC	6483
Upright to shelf corner, user must drill shelf	6495

**End panels** (reflective white)

Description	Part No.
12" x 43 <sup>1</sup> / <sub>2</sub> " high	7982
12" x 7 <sup>1</sup> / <sub>2</sub> " or less	7982-2
12" x 7 <sup>3</sup> / <sub>8</sub> " to 10 <sup>1</sup> / <sub>2</sub> "	7982-3
18" x 43 <sup>1</sup> / <sub>2</sub> " high	7983
18" x 7 <sup>1</sup> / <sub>2</sub> " or less	7983-2
18" x 7 <sup>3</sup> / <sub>8</sub> " to 10 <sup>1</sup> / <sub>2</sub> "	7983-3
24" x 43 <sup>1</sup> / <sub>2</sub> " high	7984
24" x 7 <sup>1</sup> / <sub>2</sub> " or less	7984-2
24" x 7 <sup>3</sup> / <sub>8</sub> " to 10 <sup>1</sup> / <sub>2</sub> "	7984-3
36" x 43 <sup>1</sup> / <sub>2</sub> " high	7991
36" x 7 <sup>1</sup> / <sub>2</sub> " or less	7991-2
36" x 7 <sup>3</sup> / <sub>8</sub> " to 10 <sup>1</sup> / <sub>2</sub> "	7991-3

**Bases**

Description	Part No.
Front, 1 <sup>1</sup> / <sub>2</sub> " x 36"	6923
Front, 3" x 36"	6924
Front, 3" x 48"	6930

**Doors for shelving**

Description	Part No.
36" wide x 7" H	18035
36" wide x 42" H	18043
36" wide x 34 <sup>1</sup> / <sub>2</sub> " H	18036

Swinging doors in free height attach quickly and securely.

**Drawers**

Modular drawers on page 14 available for Iron-Grip Shelving. Add "I" before N or H. Example: 8603IN.

**Uprights**

Description	Part No.
38 <sup>5</sup> / <sub>8</sub> " Left hand	5598L
38 <sup>5</sup> / <sub>8</sub> " Right hand	5599R
43 <sup>1</sup> / <sub>2</sub> " Left hand	5596L
43 <sup>1</sup> / <sub>2</sub> " Right hand	5597R
5' Left hand	5582L
5' Right hand	5583R
6' Left hand	5586L
6' Right hand	5587R
7' Left hand	5588L
7' Right hand	5589R
8' Left hand	5590L
8' Right hand	5591R
10' Left hand	5594L
10' Right hand	5595R
15' Left hand	5572L
15' Right hand	5573R
Splicer 8" long	5580

**Bin fronts & labelholders**

Description	Part No.
35 <sup>3</sup> / <sub>4</sub> " x 1" Bin front	10506
35" x 3 <sup>1</sup> / <sub>4</sub> " Bin front	10507
34" x 1 <sup>1</sup> / <sub>8</sub> " Labelholder	6615
46" x 1 <sup>1</sup> / <sub>8</sub> " Labelholder	6613

**Reinforcing channels & angles**

Description	Part No.
End angle for 12" deep	9630
End angle for 18" deep	9631
End angle for 24" deep	9632
End angle for 36" deep	9633
36" Front or rear channel	10029
48" Front or rear angle	9636
36" Center channel	9629
48" Center channel	9637

**Shelves (with studs)**

Description	Part No.
12" x 36"	6091
18" x 36"	6150
24" x 36"	6185
36" x 36"	6260
12" x 48"	6111
18" x 48"	6165
24" x 48"	6198

A standard color chart is available at the beginning of each section with a more detailed one on page 126.

# Economy Shelving

Equipto Economy Shelving is available in either open or closed styles and is ideal for cost-effective storage of packaged goods or bulky items. Economy Shelving is not interchangeable with V-Grip. 20-gauge shelves are supported by adjustable compression clips, have multiple edge bends for strength and can support up to 450 lbs. of evenly distributed load. Shelves can be height-adjusted in 1" increments.

Pre-engineered 5 shelf starter units are available with shelves in 36" and 48" widths and 12", 15", 18" and 24" depths.

Unit heights are 75" and 87". 5-shelf starter units can be expanded with any number of 5-shelf add-on kits, now or in the future.

## Closed shelving - pre-engineered units

Starter P/N	Width	Depth	Height	Weight	Adder P/N	Width	Depth	Height	Weight
EEC361275S	36"	12"	75"	88 lbs.	EEC361275A	36"	12"	75"	81 lbs.
EEC481275S	48"	12"	75"	108 lbs.	EEC481275A	48"	12"	75"	100 lbs.
EEC361575S	36"	15"	75"	98 lbs.	EEC361575A	36"	15"	75"	89 lbs.
EEC481575S	48"	15"	75"	119 lbs.	EEC481575A	48"	15"	75"	110 lbs.
EEC361875S	36"	18"	75"	109 lbs.	EEC361875A	36"	18"	75"	97 lbs.
EEC481875S	48"	18"	75"	131 lbs.	EEC481875A	48"	18"	75"	120 lbs.
EEC362475S	36"	24"	75"	131 lbs.	EEC362475A	36"	24"	75"	115 lbs.
EEC482475S	48"	24"	75"	159 lbs.	EEC482475A	48"	24"	75"	142 lbs.
EEC361287S	36"	12"	87"	96 lbs.	EEC361287A	36"	12"	87"	88 lbs.
EEC481287S	48"	12"	87"	117 lbs.	EEC481287A	48"	12"	87"	108 lbs.
EEC361587S	36"	15"	87"	107 lbs.	EEC361587A	36"	15"	87"	96 lbs.
EEC481587S	48"	15"	87"	129 lbs.	EEC481587A	48"	15"	87"	118 lbs.
EEC361887S	36"	18"	87"	118 lbs.	EEC361887A	36"	18"	87"	104 lbs.
EEC481887S	48"	18"	87"	142 lbs.	EEC481887A	48"	18"	87"	128 lbs.
EEC362487S	36"	24"	87"	132 lbs.	EEC362487A	36"	24"	87"	123 lbs.
EEC482487S	48"	24"	87"	171 lbs.	EEC482487A	48"	24"	87"	152 lbs.



## Open shelving - pre-engineered units

Starter P/N	Width	Depth	Height	Weight	Adder P/N	Width	Depth	Height	Weight
EEO361275S	36"	12"	75"	52 lbs.	EEO361275A	36"	12"	75"	51 lbs.
EEO481275S	48"	12"	75"	63 lbs.	EEO481275A	48"	12"	75"	62 lbs.
EEO361575S	36"	15"	75"	58 lbs.	EEO361575A	36"	15"	75"	57 lbs.
EEO481575S	48"	15"	75"	71 lbs.	EEO481575A	48"	15"	75"	70 lbs.
EEO361875S	36"	18"	75"	65 lbs.	EEO361875A	36"	18"	75"	63 lbs.
EEO481875S	48"	18"	75"	79 lbs.	EEO481875A	48"	18"	75"	77 lbs.
EEO362475S	36"	24"	75"	79 lbs.	EEO362475A	36"	24"	75"	77 lbs.
EEO482475S	48"	24"	75"	98 lbs.	EEO482475A	48"	24"	75"	96 lbs.
EEO361287S	36"	12"	87"	54 lbs.	EEO361287A	36"	12"	87"	53 lbs.
EEO481287S	48"	12"	87"	65 lbs.	EEO481287A	48"	12"	87"	64 lbs.
EEO361587S	36"	15"	87"	60 lbs.	EEO361587A	36"	15"	87"	59 lbs.
EEO481587S	48"	15"	87"	73 lbs.	EEO481587A	48"	15"	87"	72 lbs.
EEO361887S	36"	18"	87"	67 lbs.	EEO361887A	36"	18"	87"	65 lbs.
EEO481887S	48"	18"	87"	81 lbs.	EEO481887A	48"	18"	87"	79 lbs.
EEO362487S	36"	24"	87"	80 lbs.	EEO362487A	36"	24"	87"	79 lbs.
EEO482487S	48"	24"	87"	100 lbs.	EEO482487A	48"	24"	87"	98 lbs.

## 36" Extra shelves - compression clip included

Part No.	Width	Depth	Height	Weight	Capacity
422-9020	36"	12"	1 1/4"	6 lbs.	450 lbs.
422-9040	36"	15"	1 1/4"	7 lbs.	450 lbs.
422-9070	36"	18"	1 1/4"	9 lbs.	450 lbs.
422-9090	36"	24"	1 1/4"	12 lbs.	450 lbs.

Additional clips need 4 per shelf

490-2000 Compression clip

## 48" Extra shelves - compression clip included

Part No.	Width	Depth	Height	Weight	Capacity
422-9030	48"	12"	1 1/4"	8 lbs.	200 lbs.
422-9050	48"	15"	1 1/4"	10 lbs.	200 lbs.
422-9080	48"	18"	1 1/4"	11 lbs.	200 lbs.
422-9110	48"	24"	1 1/4"	15 lbs.	200 lbs.

Additional clips need 4 per shelf

490-2000 Compression clip

A standard color chart is available at the beginning of each section with a more detailed one on page 126.



# Boltless Storage Rack

Equipto Boltless Storage Rack is the economical alternative to standard steel shelving. Designed for hand loading and unloading only, it is ideal for automotive supplies, parts, warehouse materials, paint, batteries and just about anything else you need to store.

## Preconfigured shelving units:

Frames only - wood or particle board shelves not included

Part No.	Description	Weight
RSR-693284	4 Shelves - 32"D X 69"W X 84"H	94 lbs
RSR-6932120	5 Shelves - 32"D X 69"W X 120"H	122 lbs
RSR-6932144	6 Shelves - 32"D X 69"W X 144"H	146 lbs

Equipto offers three pre-configured shelf kit sizes:

- 4 Shelves 32"D x 69"W x 84"H
- 5 Shelves 32"D x 69"W x 120"H
- 6 Shelves 32"D x 69"W x 144"H

You can also design your own units from components as shown on the reverse side of this New Product News.



## Design your own boltless storage rack shelving units with components

### Upright angle - 1 11/16" x 2 1/4" 14 gauge

Part No.	Weight
RSR-UR-72	5.20
RSR-UR-84	6.10
RSR-UR-96	7.00
RSR-UR-120	8.70
RSR-UR-144	10.40



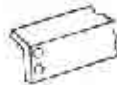
### Front to back

RSR-FB-12	0.70
RSR-FB-18	1.20
RSR-FB-24	1.60
RSR-FB-30	2.00
RSR-FB-32	2.20
RSR-FB-36	2.50
RSR-FB-48	3.40
RSR-LR-48	3.60
RSR-LR-69	5.10
RSR-LR-72	5.40
RSR-LR-96	8.40



### Left to right angle beams

RSR-LR-48	3.60
RSR-LR-69	5.10
RSR-LR-72	5.40
RSR-LR-96	8.40



### Left to right channel beam

BSR-CLR-72	7.70
BSR-CLR-96	10.40



### Shelf tie support

BSR-STS-24	2.10
BSR-STS-30	2.60
BSR-STS-32	2.70
BSR-STS-36	3.00
BSR-STS-48	4.00



### Tie plate

BSR-TP	0.20
--------	------



### Particle board shelves

Part No.	Description (D x W)	Weight
BSRPB-1236	12" x 36"	7.27 lbs.
BSRPB-1248	12" x 48"	9.69 lbs.
BSRPB-1269	12" x 69"	13.94 lbs.
BSRPB-1272	12" x 72"	14.54 lbs.
BSRPB-1296	12" x 96"	19.39 lbs.
BSRPB-1836	18" x 36"	10.91 lbs.
BSRPB-1848	18" x 48"	14.54 lbs.
BSRPB-1869	18" x 69"	20.90 lbs.
BSRPB-1872	18" x 72"	21.81 lbs.
BSRPB-1896	18" x 96"	29.08 lbs.
BSRPB-2436	24" x 36"	14.54 lbs.
BSRPB-2448	24" x 48"	19.39 lbs.
BSRPB-2469	24" x 69"	27.87 lbs.
BSRPB-2472	24" x 72"	29.08 lbs.
BSRPB-2496	24" x 96"	38.78 lbs.
BSRPB-3036	30" x 36"	18.18 lbs.
BSRPB-3048	30" x 48"	23.00 lbs.
BSRPB-3069	30" x 69"	34.87 lbs.
BSRPB-3072	30" x 72"	36.36 lbs.
BSRPB-3096	30" x 96"	48.48 lbs.
BSRPB-3236	32" x 36"	19.39 lbs.
BSRPB-3248	32" x 48"	25.85 lbs.
BSRPB-3269	32" x 69"	37.16 lbs.
BSRPB-3272	32" x 72"	38.78 lbs.
BSRPB-3296	32" x 96"	51.71 lbs.
BSRPB-3636	36" x 36"	20.00 lbs.
BSRPB-3648	36" x 48"	29.08 lbs.
BSRPB-3669	36" x 69"	41.81 lbs.
BSRPB-3672	36" x 72"	43.63 lbs.
BSRPB-3696	36" x 96"	58.17 lbs.
BSRPB-4848	48" x 48"	40.00 lbs.
BSRPB-4869	48" x 69"	55.75 lbs.
BSRPB-4872	48" x 72"	58.17 lbs.
BSRPB-4896	48" x 96"	77.56 lbs.

Specific to only Boltless Storage Rack shelving.  
These do not fit other Equipto shelving with particle board shelves.

A standard color chart is available at the beginning of each section with a more detailed one on page 126.

# Bar Racks

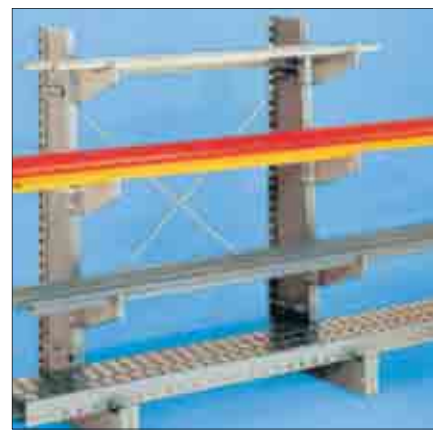
Equipto Bar Racks are ideal for storing long and bulky parts as well as pipes. Each arm carries 325 lbs. Choose 3', 6' or 8' widths, to support parts as needed.

- Specialty bar racks
- Single or double face
- Two heights, three widths, two depths
- Use individually or in rows
- Shelves optionally available.
- Capacity 650 lbs. per level

Bar Racks are the effective answer to organizing steel — or any other items that don't need shelf support. Slotted angle, pipe, tubes, bars — Equipto Bar Racks hold them all. With no wasted space and absolutely simple access. Note: Be sure to order a rack end to finish each row. †



Shelves (12" x 36") fit between rack arms to hold long and short products in same unit.



Single-faced rack with end can be used free-standing to hold slotted angle, pipe, bars, etc.



Shelving & Racks

Why try to maneuver those special items in and out of shelving, when they don't need to be there in the first place? Solid steel Equipto Bar Racks are specially designed for just those items. Single or double-face bar racks in a range of heights and widths can be used individually or in rows. You can even add a shelf here and there for items too short to reach between rack arms.

## Accessories

Description	Part No.
Extra Arm, 12" deep; capacity 325 lbs.	1070
12" x 36" Extra shelf for bottom arms only	6052
12" x 36" Extra shelf for other arms	6053

**Bar Racks** - a complete rack includes one or more units and a rack end. (†)

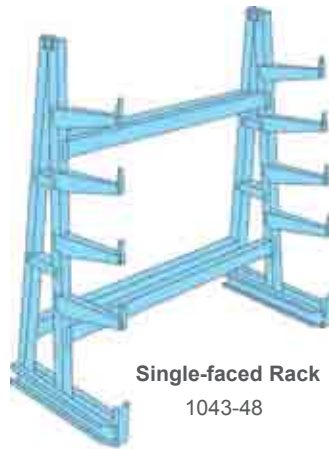
Description	Height	Width	Depth	Part No
Double-face unit	7'	3'	34"	1060
Double-face unit	7'	6'	34"	1060-72
Double-face unit	7'	8'	34"	1060-96
†Double-face rack end	7'	2 <sup>3</sup> / <sub>8</sub> "	34"	1061
Single-face unit	7'	3'	22 <sup>1</sup> / <sub>8</sub> "	1062
Single-face unit	7'	6'	22 <sup>1</sup> / <sub>8</sub> "	1062-72
Single-face unit	7'	8'	22 <sup>1</sup> / <sub>8</sub> "	1062-96
†Single-face rack end	7'	2 <sup>3</sup> / <sub>8</sub> "	22 <sup>1</sup> / <sub>8</sub> "	1063
Double-face unit	4'	3'	34"	1064
Double-face unit	4'	6'	34"	1064-72
Double-face unit	4'	8'	34"	1064-96
†Double-face rack end	4'	2 <sup>3</sup> / <sub>8</sub> "	34"	1065
Single-face unit	4'	3'	22 <sup>1</sup> / <sub>8</sub> "	1066
Single-face unit	4'	6'	22 <sup>1</sup> / <sub>8</sub> "	1066-72
Single-face unit	4'	8'	22 <sup>1</sup> / <sub>8</sub> "	1066-96
†Single-face rack end	4'	2 <sup>3</sup> / <sub>8</sub> "	22 <sup>1</sup> / <sub>8</sub> "	1067

A standard color chart is available at the beginning of each section with a more detailed one on page 126.

# Heavy Duty Bar Racks

The innovative, space-saving answer to organization of a wide range of long items, with a capacity of up to 12,000 lbs. per unit! Choose single or double-faced designs in 18 different sizes for your best application. Available in three widths, three heights and two arm lengths - all adjustable, and designed for economical, common upright performance.

- Ideal for long, difficult-to-organize items
- Organizes and protects valuable bar stock, pipe, lumber, conduit, steel angle, tool steel and more
- High capacity and high strength
- Adjustable on 2" centers
- 18" arm holds 1,000 lbs, 30" arm holds 500 lbs.,
- each frame up to 12,000 lbs.



**Single-faced Rack**  
1043-48



Note: 8' high units have 5 levels; 10' and 12' high units have 6 and 7 levels respectively.

**For additional arms, order:**

- Extra 18" arm: 1046-18
- Extra 30" arm: 1056-30

**A complete rack includes one or more units and a rack end.**

## Heavy Duty Bar Racks

### Single-faced 18" Arms (Unit Depth 36")

Unit Height	Width of Unit Bays			Rack End
	48"	72"	99"	
8'-0"	1043-48	1043-72	1043-99	1043
10'-0"	1044-48	1044-72	1044-99	1044
12'-0"	1045-48	1045-72	1045-99	1045

### Double-faced 18" Arms (Unit Depth 54")

Unit Height	Width of Unit Bays			Rack End
	48"	72"	99"	
8'-0"	1040-48	1040-72	1040-99	1040
10'-0"	1041-48	1041-72	1041-99	1041
12'-0"	1042-48	1042-72	1042-99	1042

### Single-faced 30" Arms (Unit Depth 48")

Unit Height	Width of Unit Bays			Rack End
	48"	72"	99"	
8'-0"	1053-48	1053-72	1053-99	1053
10'-0"	1054-48	1054-72	1054-99	1054
12'-0"	1055-48	1055-72	1055-99	1055

### Double-faced 30" Arms (Unit Depth 78")

Unit Height	Width of Unit Bays			Rack End
	48"	72"	99"	
8'-0"	1050-48	1050-72	1050-99	1050
10'-0"	1051-48	1051-72	1051-99	1051
12'-0"	1052-48	1052-72	1052-99	1052

Note: Be sure to order a rack end to finish each row.

Note: Limit 6 arms per upright. Capacity: 18" arm-1,000 lbs. each; 30" arm-500 lbs. each.



Hand loading and retrieval is fast with easy access from either side of rack.



Power trucks can load heavier items on rack with access from either side.

A standard color chart is available at the beginning of each section with a more detailed one on page 126.

# Reel Racks

Organize reels of cable and supplies, making them easy to retrieve. Equipto Reel Racks hold up to 2000 lbs. per level, and up to 12000 lbs. per rack. (Reel Rods not included.)

**Racks hold small to large reels on both sides — safely. And you can move them easily by hand or fork lift truck.**

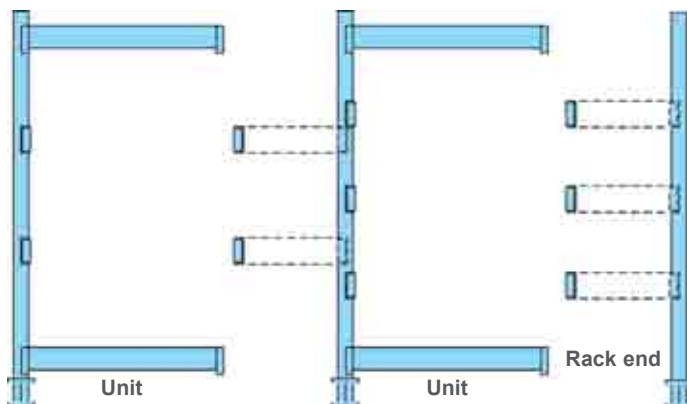
- High capacity free standing A-frame racks
- 96"-120"-144" heights
- Rack is 26" deep at the base
- 12000 lb. capacity
- 3" x 3" vertical posts with mounting holes
- Adjustable cross beams on 2" centers with automatic safety locks
- Rack end required for each row of units



1072R04



1076E08  
rack ends



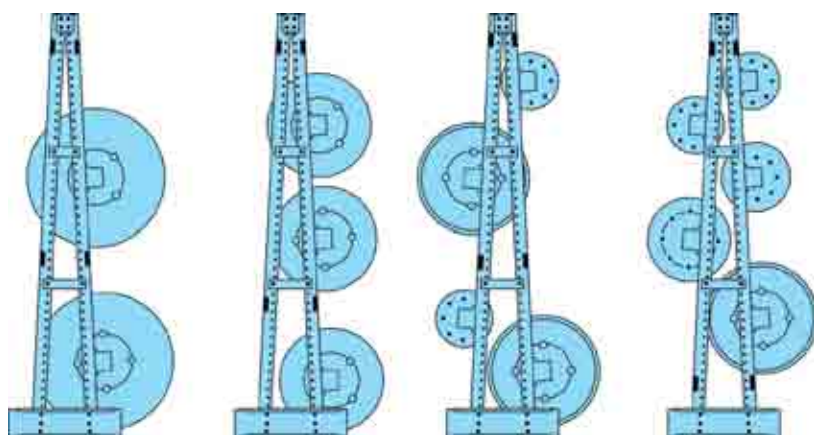
Each unit supplied with right-hand reel holders (as specified) that fasten to next unit or rack end.

	Width		Height		No. of Reel Holders
	96"	120"	144"		
48"	1072R04	1072R14	1072R24	Two pair	
72"	1072R06	1072R16	1072R26	Two pair	
48"	1073R04	1073R14	1073R24	Three pair	
72"	1073R06	1073R16	1073R26	Three pair	
48"	1074R04	1074R14	1074R24	Four pair	
72"	1074R06	1074R16	1074R26	Four pair	
48"	1075R04	1075R14	1075R24	Five pair	
72"	1075R06	1075R16	1075R26	Five pair	
1076E08 Rack End, 96" high					
1076E10 Rack End, 120" high					
1076E12 Rack End, 144" high					



**Extra reel holders**  
 • Pairs only.  
 Reel holders accommodate axles up to 2<sup>3/8</sup>" O.D.

Shaft Size	Capacity	Part No. (pr.)
To 2 <sup>3/8</sup> " O.D.	2000 lbs.	78218RH



Rack with two pr. reel holders    Rack with three pr. reel holders    Rack with four pr. reel holders    Rack with five pr. reel holders



Pipe not included. Secure standard schedule 40 pipe (up to 2" nominal) from your local plumbing supply. Use 47" pipe length for 48" wide rack; 71" pipe for 72" wide rack. Reel holders are adjustable on 2" increments to hold multiple reels.

A standard color chart is available at the beginning of each section with a more detailed one on page 126.

# Specialty Racks

Equipto provides storage for all types of parts. Keep grinding wheels, spools, and even auto body parts on these unique, heavy-duty racks.

## Disc rack

- V-Formed shelves with divider rods
- 6 shelves adjust 1<sup>1/2</sup>" centers
- Divider rods are on 1" centers
- Ideal for grinding wheels and numerous disc shaped objects
- All items are easily accessible
- Size of unit is 84" high, 36" wide and 8<sup>1/4</sup>" deep
- Up to 4 levels high

### Description: Disc Rack

Part No. 879-7



## Trim & molding rack

- Keep trim and molding horizontally
- 48 compartments
- Keep valuable trim and molding pieces organized and out of harm's way.

### Description: Trim & Molding Rack

Size : 48"D x 36"W x 84"H

Part No: 878-9



## Wire spool rack

- 7-shelf reel rack adjustable on 1<sup>1/2</sup>" centers
- Organize and retrieve wire, cable, chain, hose, rope or tubing
- Holds reels up to 16" in diameter
- V-shaped shelves with center rod
- Fiberboard on shelves to deaden noise and prevent excessive uncoiling
- Spool rods are included

### Description: Wire Spool Rack

Size: 8"D x 36"W x 84"H

Part No. 880-7

