



# Mighty<sup>lite</sup>

Insulated Food Carriers

Carries  
easy.  
Holds  
safe.

 **Material Handling USA**  
**800-326-4403**  
<https://www.mh-usa.com/>  
[Sales@MaterialHandling-USA.com](mailto:Sales@MaterialHandling-USA.com)

Lasts  
long.

The mighty **affordable**...  
mighty **versatile** family of  
insulated food carriers.



# Ultra-light. Super-strong.

## What is it made of?

Advanced plastic construction—  
**EPP** (Expanded Polypropylene)



### Lightweight

EPP is an engineered plastic foam material that is remarkably lightweight and useful in a wide variety of applications where weight reduction is desired.



### Super Strong

EPP has a very high strength-to-weight ratio and is an excellent energy-absorbing material that can withstand impact without damage.



### Insulative

EPP provides effective thermal insulation for applications where food, medical supplies and other temperature sensitive products require protection.



### Cleanable

EPP is chemically inert and unaffected by oil, grease and most chemicals. Also, it does not support microbial growth.



### Recyclable

EPP is an environmentally sound, 100% recyclable material. Manufacturing EPP requires no Volatile Organic Compounds (VOCs), chlorofluorocarbon or other environmentally damaging compounds.



### Applications

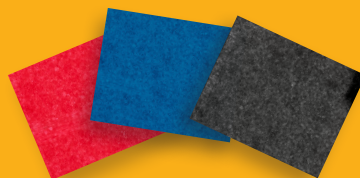
EPP is used across a wide range of industries.

**Automotive**— lightweight, strength, impact & noise absorption properties (ex. fuel economy, bumpers, seats).

**Packaging**— impact absorption, lightweight, recyclable.

**HVAC**— insulation, lightweight, strength, noise absorption.

**FOOD TRANSPORT** ...*Mightyllite Food Transport*



Available  
Lid & Door  
Colors





Beef Wellington

Stuffed Flouries

Barbecue

Mightylite  
Insulated Food Carriers

Dank  
America  
Business Center

Ballroom 4



# Front-load.

**60%** Lighter  
than traditionally molded carriers



**Ergonomic 8-Handle Design**— Ultra light with 8 convenient handles, the ultimate design for lifting, carrying, and moving in any situation. Mightylite makes moving hot & cold food a lot easier!



**Mighty Door**— Swings 270° for easy loading, unbreakable travel latch, built-in “gasketless” door seal, and large 5.5” x 8.5” label holder / white board.

Included with Front-loaders

**BONUS**  
Wire Caddy

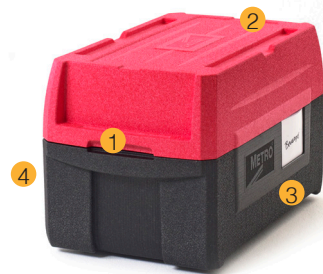


# Top-load.



**80%** Lighter  
than traditional top-loaders

**60%** Lighter  
than coolers



**Ergonomic Design**— Ultra-light with 4 convenient handles, facilitates lifting, carrying, and moving in any situation. Use the optional strap for one-handed or two-person carrying!



The multi-purpose carrier with **63% more** storage.

# Supersized. 180XL

Use it as a top-loader,  
cooler, or server!





**Roll with the Mightylite dolly**— Heavy-duty, 350 lb. (158kg) capacity dolly to help transport carriers. Also designed to move milk crates.

*Dolly safely nests on top of the carrier for secure vehicle transport.*



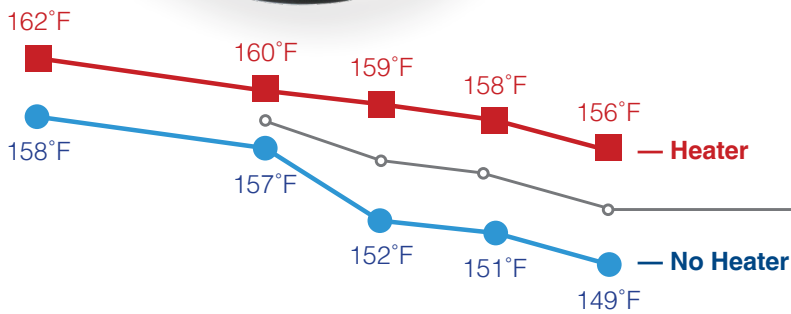
## Stacks well with others.

Integrated full-length index features allow for secure stacking during transport or storage. Thoughtful design prohibits sliding in any direction.



# Heater.

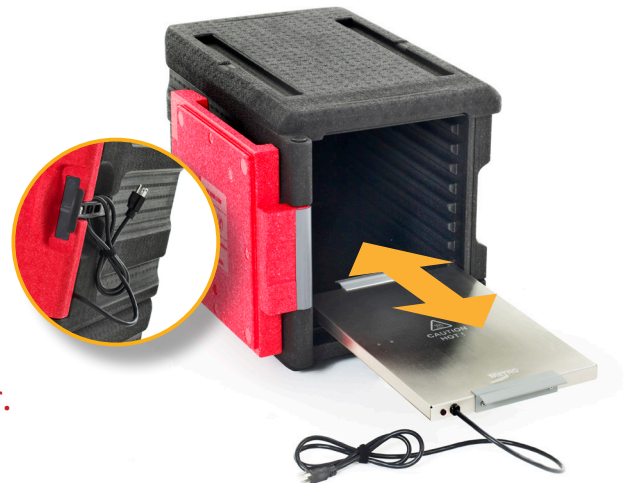
## Keep hot food safe & appetizing longer.



Stop worrying about temperature loss from frequent openings.

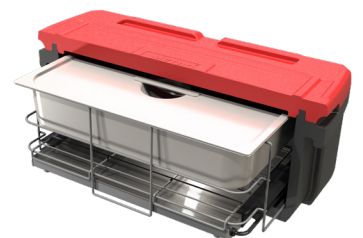


Fits perfectly in any top- or front-loader.



Serve it up with a serving ring and top-loader.

Endless serving possibilities. **Transport and serve with a single solution** that does not require water or canned fuel.





**ML300**  
4 Pan Front-loader



**ML400**  
6 Pan Front-loader



**ML180**  
3 Pan Top-loader



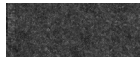
**ML180XL**  
5 Pan Top-loader



**RED**  
ML300  
ML400



**BLUE**  
ML300-BU  
ML400-BU



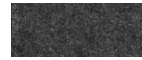
**BLACK**  
ML300-BL  
ML400-BL



**RED**  
ML180  
ML180XL



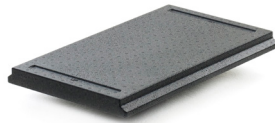
**BLUE**  
ML180-BU  
ML180XL-BU



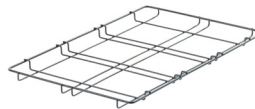
**BLACK**  
ML180-BL  
ML180XL-BL



**MLD1**  
Dolly  
(Includes strap)



**MLP1**  
Thermal Partition



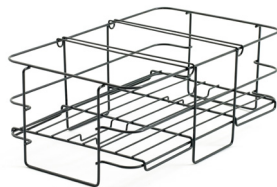
**MLC1**  
Wire Caddy  
(Included with front-loaders)



**MLS1**  
Carrying Strap



**MLH1 (120V)**  
**MLHX1 (240V)**  
Heater



**MLW1**  
Serving Ring

 **Material Handling USA**  
**800-326-4403**  
<https://www.mh-usa.com/>  
[Sales@MaterialHandling-USA.com](mailto:Sales@MaterialHandling-USA.com)



SUPPORTS GOOD  
**HACCP**  
PROCESSES

LO8-017 REV 5/19

© 2019 InterMetro Industries Corporation, Wilkes-Barre, PA 18705



We put space to work.

an Ali Group Company



The Spirit of Excellence