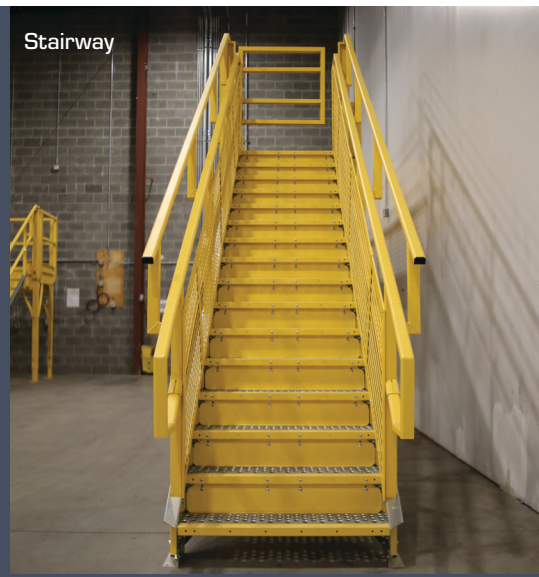


Conveyor Crossover



Stairway



Ship's Stairway



STAIRWAYS, SHIP'S STAIRWAYS, CATWALKS & CROSSOVERS

— Powered by Equipto

NEW!

2022 PRODUCT UPDATES

Read about our new OSHA & IBC Compliant Ship's Stairways on page 4.



STAIRWAYS —

NOW OFFERING ONE IBC AND TWO OSHA COMPLIANT STAIRWAY DESIGNS

- Over 200 sizes designed to meet or exceed OSHA or IBC standards
- Galvanized steel stairway systems for safe, convenient access to all levels
- Savings to you in time and money
- Completely prefabricated for quick assembly
- One-third the cost of building your own unit from structural steel
- Adaptable to all types of installations
- Prefabricated for indoor use, permanent or temporary
- Heights from 3' to 12' 3" with four tread widths available
- Non-skid, perforated, galvanized grating
- Stairways are hot dipped galvanized except for railings which come in safety yellow.
- Landing Anchor Bracket supplied – pre-drilled 3" to 4 1/2" for mounting stairways to landings
- Base Anchor Bracket supplied – pre-drilled 3" bracket for mounting stairways at base

Equipto's Stairways have been designed for quick assembly in indoor, outdoor or temporary-use spaces. Our Stairways are OSHA compliant for two designs and over 200 sizes that meet and exceed OSHA and IBC standards.



IBC STAIRWAYS

(International Building Code)

Stair Tread Solid Panels to Close Vertical Rise:

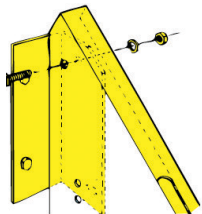
(one per stair tread)

36" 1536URC-M

48" 1548URC-M

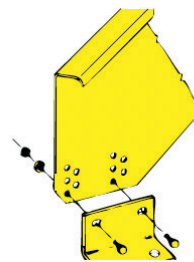
Note: Riser covers for IBC Stairways are included in preconfigured units

Rise Min/Max	Run Min/Max	36" Tread Width Part No.	48" Tread Width Part No.
3'0" / 3'6"	4'8" / 4'11"	1536IBC5	1548IBC5
3'7" / 4'0"	5'7" / 5'11"	1536IBC6	1548IBC6
4'1" / 4'7"	6'6" / 6'10"	1536IBC7	1548IBC7
4'8" / 5'1"	7'5" / 7'10"	1536IBC8	1548IBC8
5'2" / 5'10"	8'4" / 8'10"	1536IBC9	1548IBC8
6'0" / 7'0"	10'1" / 10'9"	1536IBC11	1548IBC11
7'1" / 8'2"	12'0" / 12'9"	1536IBC13	1536IBC13
8'3" / 9'4"	13'10" / 14'6"	1536IBC15	1548IBC15
9'5" / 10'6"	15'8" / 16'4"	1536IBC17	1548IBC17
10'7" / 12'3"	18'5" / 19'4"	1536IBC20	1548IBC20



Landing Anchor Bracket (Supplied)

Pre-drilled, 3" to 4 1/2", for mounting stairways to landings.



Base Anchor Bracket (Supplied)

Pre-drilled, 3" bracket for mounting stairways at base.

STAIRWAYS —

OSHA INTERNAL

Stairways with External Handrails



Rise Min/Max	Run Min/Max	24" Tread Width Part No.	30" Tread Width Part No.	36" Tread Width Part No.	48" Tread Width Part No.
3'2" / 3'8"	3'3" / 3'7"	1724S04	1730S04	1736S04	1748S04
3'11" / 4'5"	4'0" / 4'5"	1724S05	1730S05	1736S05	1748S05
4'6" / 5'1"	5'0" / 5'4"	1724S06	1730S06	1736S06	1748S06
5'2" / 5'9"	5'9" / 6'3"	1724S07	1730S07	1736S07	1748S07
5'10" / 6'6"	6'7" / 7'1"	1724S08	1730S08	1736S08	1748S08
6'7" / 7'2"	7'6" / 7'11"	1724S09	1730S09	1736S09	1748S09
7'3" / 7'11"	8'3" / 8'9"	1724S10	1730S10	1736S10	1748S10
8'0" / 8'8"	9'1" / 9'7"	1724S11	1730S11	1736S11	1748S11
8'9" / 9'5"	9'11" / 10'5"	1724S12	1730S12	1736S12	1748S12
9'6" / 10'10"	11'7" / 12'6"	1724S14	1730S14	1736S14	1748S14

Overall width of stairways is 12' 6" greater than the tread width.

NEW!

OSHA EXTERNAL

Stairways with Internal Handrails



Stair Tread Solid Panels to Close Vertical Rise: (one per stair tread)

30" 1730SRC

36" 1736SRC

48" 1748SRC



Note: Internal hand rails are not available on 24" and 30" wide stairways.

Rise Min/Max	Run Min/Max	36" Tread Width Part No.	48" Tread Width Part No.
3'2" / 3'8"	3'3" / 3'7"	1836S04	1848S04
3'11" / 4'5"	4'0" / 4'5"	1836S05	1848S05
4'6" / 5'1"	5'0" / 5'4"	1836S06	1848S06
5'2" / 5'9"	5'9" / 6'3"	1836S07	1848S07
5'10" / 6'6"	6'7" / 7'1"	1836S08	1848S08
6'7" / 7'2"	7'6" / 7'11"	1836S09	1848S09
7'3" / 7'11"	8'3" / 8'9"	1836S10	1848S10
8'0" / 8'8"	9'1" / 9'7"	1836S11	1848S11
8'9" / 9'5"	9'11" / 10'5"	1836S12	1848S12
9'6" / 10'10"	11'7" / 12'6"	1836S14	1848S14
10'11" / 12'2"	13'0" / 14'3"	1836S16	1848S16

Overall width of stairways is 5" greater than the tread width.

OSHA Internal Stairways with External Handrails



OSHA External Stairways with Internal Handrails

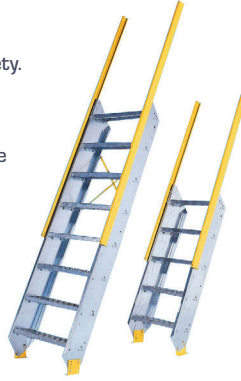


SHIP'S LADDERS —

Equipto's Ship's Ladders provide safe, multi-level access up or down to platforms, roofs, pits, trenches, wells and more. Extended handrail and non-skid treads provided additional safety.

- 75° rise
- Meets OSHA standards
- New and improved handrail design extends 42" above the top stair tread and is a 2.5" wide rail for a sturdy grip
- Perfect for any application where space is a premium
- Deep, non-skid treads provide for firm footing
- Use with many other Equipto products

Ladder Details: Rise from tread to tread is approximately 11.5", tread is 1.5" in height, and the opening is about 10" (space between steps).



For Floor Heights of:*	Horiz. Run	Tread Width	Overall Width	Part No.
3'8" to 4'7.5"	1'11"	24"	29"	1524L04
	1'11"	30"	35"	1530L04
4'7.5" to 5'7"	2'2"	24"	29"	1524L05
	2'2"	30"	35"	1530L05
5'7" to 6'6"	2'5"	24"	29"	1524L06
	2'5"	30"	35"	1530L06
6'6" to 7'6"	2'8"	24"	29"	1524L07
	2'8"	30"	35"	1530L07
7'6" to 8'6"	2'11"	24"	29"	1524L08
	2'11"	30"	35"	1530L08
8'6" to 9'5"	3'2"	24"	29"	1524L09
	3'2"	30"	35"	1530L09
9'5" to 10'5"	3'5"	24"	29"	1524L10
	3'5"	30"	35"	1530L10
10'5" to 11'5"	3'8"	24"	29"	1524L11
	3'8"	30"	35"	1530L11

*The actual floor height is dependent on the material being used for the flooring of the landing or platform. Add the following to "For Floor Heights of:" for: Bar Grating: 1", Perforated/Solid Grating: 1.5", Tuffdeck: 1.125", Tuffdeck & Roofdeck: 2.25"

CROSSOVER BRIDGE —

SHIP'S LADDER CROSSOVER BRIDGE

Prefabricated crossover bridges for observation platforms - in plants or out in the field.

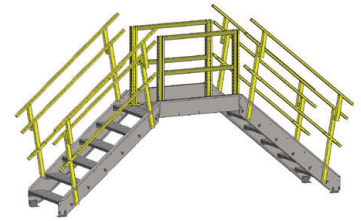
- Galvanized, non-skid steps and platform
- Designed to meet OSHA standards
- Distributed load capacity of 125 lbs. per sq ft
- 24" Stair Tread for Crossover Bridge does not meet OSHA standards



A	B	C	D	Part No.	Part No.
Vertical Clearance	Length at 36" Height	Overall Height	Overall Length	24" Tread Width	30" Tread Width
42"	34"	7'2"	5'9"	1524X04	1530X04
54"	40"	8'1"	6'3"	1524X05	1530X05
65"	46"	9'1"	6'10"	1524X06	1530X06
77"	52"	10'1"	7'4"	1524X07	1530X07
88"	59"	11'0"	7'10"	1524X08	1530X08
100"	65"	12'0"	8'4"	1524X09	1530X09
112"	71"	12'11"	8'10"	1524X10	1530X10
123"	77"	13'11"	9'5"	1524X11	1530X11

Ready-made for fast assembly, no cutting or welding. Crossover bridges provide safe walkways over conveyors, ducts, pipes and other obstacles.

OSHA STAIRWAY CROSSOVER BRIDGE



A	B	C	D	Part No.	Part No.	Part No.
Vertical Clearance	Length at 36" Height	Overall Height	Overall Length	24" Stair Tread is 36 ^{1/2} " Overall	30" Stair Tread is 42 ^{1/2} " Overall	36" Stair Tread is 48 ^{1/2} " Overall
2'8 ^{1/4} "	-	6'4"	10'8"	1724B04	1730B04	1736B04
3'4 ^{3/4} "	4'6 ^{5/32} "	7'0 ^{5/8} "	12'4"	1724B05	1730B05	1736B05
4'1 ^{1/4} "	6'2 ^{1/2} "	7'9 ^{1/8} "	14'0"	1724B06	1730B06	1736B06
4'9 ^{11/16} "	7'10 ^{23/32} "	8'5 ^{5/8} "	15'9"	1724B07	1730B07	1736B07
5'6 ^{9/16} "	9'6 ^{29/32} "	9'2 ^{1/8} "	17'5"	1724B08	1730B08	1736B08
6'2 ^{5/8} "	11'3 ^{1/8} "	9'10 ^{9/16} "	19'1"	1724B09	1730B09	1736B09
6'11 ^{5/32} "	12'11 ^{5/16} "	10'6 ^{3/4} "	20'9"	1724B10	1730B10	1736B10
7'7 ^{5/8} "	14'7 ^{17/32} "	11'3 ^{1/4} "	22'5"	1724B11	1730B11	1736B11

SHIP'S STAIRWAYS —

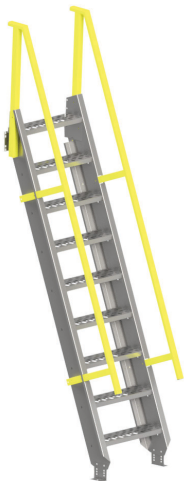
Equipto's Ship's Stairways have been designed for quick assembly in indoor, outdoor or temporary-use spaces. Our Ship's Stairways provide platform access in a smaller footprint than stairways with a traditional handrail.

- 66° - 70° rise
- Deep, non-skid treads
- Handrail
- Meets OSHA or IBC standards

NEW!

OSHA SHIP'S STAIRWAYS

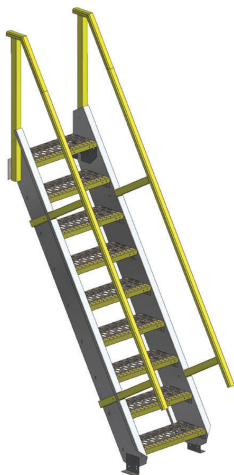
Designed For a Smaller Footprint



Rise Min/Max	Run Min/Max	Number of Treads	24" Tread Part No.	30" Tread Part No.
43.032" / 39.032"	26.08" / 26.81"	4	2124OS04	2130OS04
47.156" / 43.032"	25.88" / 26.64"	4	2124OS04-2	2130OS04-2
50.656" / 47.156"	30.55" / 31.32"	5	2124OS05	2130OS05
55.032" / 50.656"	29.81" / 31.28"	5	2124OS05-2	2130OS05-2
59.531" / 55.032"	29.84" / 31.33"	5	2124OS05-3	2130OS05-3
63.953" / 59.532"	34.60" / 36.47"	6	2124OS06	2130OS06
68.656" / 63.953"	33.98" / 36.18"	6	2124OS06-2	2130OS06-2
73.094" / 68.656"	38.97" / 41.07"	7	2124OS07	2130OS07
78.032" / 73.094"	38.31" / 41.27"	7	2124OS07-2	2130OS07-2
83.125" / 78.032"	38.25" / 41.21"	7	2124OS07-3	2130OS07-3
88.375" / 83.125"	41.82" / 45.40"	8	2124OS08	2130OS08
93.750" / 88.375"	44.19" / 45.36"	8	2124OS08-2	2130OS08-2
99.250" / 93.750"	46.24" / 50.62"	9	2124OS09	2130OS09
104.906" / 99.250"	46.28" / 50.67"	9	2124OS09-2	2130OS09-2
110.719" / 104.906"	50.31" / 55.40"	10	2124OS10	2130OS10
116.656" / 110.719"	50.31" / 55.40"	10	2124OS10-2	2130OS10-2
122.750" / 116.656"	54.11" / 59.88"	11	2124OS11	2130OS11
129.000" / 122.750"	54.13" / 59.91"	11	2124OS11-2	2130OS11-2
135.438" / 129.000"	58.19" / 64.67"	12	2124OS12	2130OS12

NEW!

IBC SHIP'S STAIRWAYS

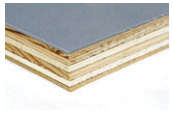


Rise Max/Min	Run Min/Max	Number of Treads	Part No. 24" Tread	Part No. 30" Tread
44.826"/40.610"	39.25"/40.34"	5	2124IBC05-2	2130IBC05-2
47.030"/42.550"	31.87"/32.22"	5	2124IBC05	2130IBC05
52.016"/47.403"	40.55"/41.50"	6	2124IBC06-3	2130IBC06-3
53.590"/58.983"	39.25"/40.34"	6	2124IBC06-2	2130IBC06-2
56.478"/51.625"	43.43"/45.28"	6	2124IBC06	2130IBC06
60.497"/55.493"	45.88"/47.43"	7	2124IBC07-3	2130IBC07-3
62.355"/57.356"	44.92"/46.72"	7	2124IBC07-2	2130IBC07-2
65.925"/60.698"	48.90"/51.45	7	2124IBC07	2130IBC07
71.117"/65.729"	57.28"/60.62"	8	2124IBC08-2	2130IBC08-2
75.373"/69.772"	56.92"/53.74"	8	2124IBC08	2130IBC08
79.884"/74.103"	57.28"/60.62"	9	2124IBC09-2	2130IBC09-2
84.820"/78.846"	59.83"/63.80"	9	2124IBC09	2130IBC09
88.648"/82.476"	64.40"/66.38"	10	2124IBC10-2	2130IBC10-2
94.268"/87.920"	65.92"/70.67"	10	2124IBC10	2130IBC10
97.412"/90.849"	69.51"/74.39"	11	2124IBC11-2	2130IBC11-2
103.715"/96.995"	65.92"/70.67"	11	2124IBC11	2130IBC11
106.177"/99.995"	75.30"/80.90"	12	2124IBC12-2	2130IBC12-2
113.163"/106.069"	71.39"/76.84"	12	2124IBC12	2130IBC12
114.941"/107.596"	75.30"/90.90"	13	2124IBC13-2	2130IBC13-2

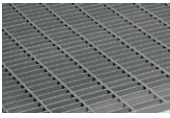
PRE-CONFIGURED PLATFORMS —

They are designed to integrate with other Equipto products to provide one-source space savings that are custom tailored for your individual application. Every place from aircraft hangars to warehouses to factories will benefit from the space saving solutions provided with Equipto platforms!

Decking options include:



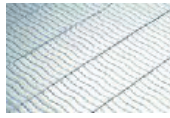
Anti-Skid Tuffdeck



Bar Grating



Perforated Steel Grating



Solid Steel Grating

Double or triple your floor space with Equipto pre-fabricated platforms! These rugged elevated floors, walkways and stairways add valuable area where you need it, at a fraction of the cost of acquiring new buildings. Because of their modular design, Equipto platforms are economical, quickly installed and can even be re-configured on your premises as your requirements change.

- Double floor capacity
- Modular design lets you add units as needed
- Less expensive than leasing or Construction
- Relocation to other facilities is easy
- Prefabricated for immediate use
- 36" wide stairway to 4' x 4' landing with OSHA stairs 36" wide stairway to 5'W x 4'D landing with IBC stairs



Photo is a rendered image, the actual product may vary.

PLATFORM WITH OSHA STAIRWAY

Height	Type of Decking	Platform Dimensions (not including stair landing)		
		10'x10'	10'x20'	8'x12'
8'	Bar Grating	1010-8GMEZ-BG-17	1020-8GMEZ-BG-17	1208-8GMEZ-BG-17
8'	Perforated Steel Grating	1010-8GMEZ-PG-17	1020-8GMEZ-PG-17	1208-8GMEZ-PG-17
8'	Anti-Skid Tuffdeck	1010-8GMEZ-RT-17	1020-8GMEZ-RT-17	1208-8GMEZ-RT-17
8'	Solid Steel Grating	1010-8GMEZ-SG-17	1020-8GMEZ-SG-17	1208-8GMEZ-SG-17
12'	Bar Grating	1010-12GMEZ-BG-17	1020-12GMEZ-BG-17	1208-12GMEZ-BG-17
12'	Perforated Steel Grating	1010-12GMEZ-PG-17	1020-12GMEZ-PG-17	1208-12GMEZ-PG-17
12'	Anti-Skid Tuffdeck	1010-12GMEZ-RT-17	1020-12GMEZ-RT-17	1208-12GMEZ-RT-17
12'	Solid Steel Grating	1010-12GMEZ-SG-17	1020-12GMEZ-SG-17	1208-12GMEZ-SG-17

NEW!

PLATFORM WITH IBC STAIRWAY

Height	Type of Decking	Platform Dimensions (not including stair landing)		
		10'x10'	10'x20'	8'x12'
8'	Bar Grating	1010-8GMEZ-BG-IBC	1020-8GMEZ-BG-IBC	1208-8GMEZ-BG-IBC
8'	Perforated Steel Grating	1010-8GMEZ-PG-IBC	1020-8GMEZ-PG-IBC	1208-8GMEZ-PG-IBC
8'	Anti-Skid Tuffdeck	1010-8GMEZ-RT-IBC	1020-8GMEZ-RT-IBC	1208-8GMEZ-RT-IBC
8'	Solid Steel Grating	1010-8GMEZ-SG-IBC	1020-8GMEZ-SG-IBC	1208-8GMEZ-SG-IBC
12'	Bar Grating	1010-12GMEZ-BG-IBC	1020-12GMEZ-BG-IBC	1208-12GMEZ-BG-IBC
12'	Perforated Steel Grating	1010-12GMEZ-PG-IBC	1020-12GMEZ-PG-IBC	1208-12GMEZ-PG-IBC
12'	Anti-Skid Tuffdeck	1010-12GMEZ-RT-IBC	1020-12GMEZ-RT-IBC	1208-12GMEZ-RT-IBC
12'	Solid Steel Grating	1010-12GMEZ-SG-IBC	1020-12GMEZ-SG-IBC	1208-12GMEZ-SG-IBC

CATWALKS & WALKWAYS —

Ideal for machinery repair, inspection or observation, Equipto Bridge Catwalks can be combined with stairways and ship's ladders to create structures. Versatile, pre-fabricated for easy assembly and engineered for maximum safety and performance.

- Catwalks feature rugged platform frames, 42" high safety railings and 4" high kickplates
- Choose ship's ladders or stairways for access
- 3 pre-configured heights, multiple lengths with add-on units available

Note: Stairways and ship's ladders should be ordered equal to or narrower than catwalk width.



Choose the platform and combine with the ship's ladders and stairways to make your complete catwalk.

NEW!

OSHA STAIRWAYS

Unit Height	Tread Width	Overall Width	Horizontal Stair Run	Stairway Part No.
6'	36"	48 ^{1/2} "	6'11"	1836S08
8'	36"	48 ^{1/2} "	9'6"	1836S11
10'	36"	48 ^{1/2} "	12'0"	1836S14

SHIP'S LADDERS

Unit Height	Tread Width	Overall Width	Horizontal Stair Run	Stairway Part No.
6'	30"	35"	29"	1530L06
8'	30"	35"	35"	1530L08

PLATFORMS

Floor Height	Vertical Clear	Walkway Length	Walkway Width	Catwalk Part No.
6' high unit				
73 ^{5/8} "	63 ^{1/2} "	2'	48"	976S02
73 ^{5/8} "	63 ^{1/2} "	4'	48"	976S04
73 ^{5/8} "	63 ^{1/2} "	6'	48"	976S06
73 ^{5/8} "	63 ^{1/2} "	8'	48"	976S08
73 ^{5/8} "	63 ^{1/2} "	10'	48"	976S10
73 ^{5/8} "	60 ^{3/4} "	12'	48"	976S12
73 ^{5/8} "	58"	16'	48"	976S16
73 ^{5/8} "	56"	20'	48"	976S20
8' high unit				
97 ^{5/8} "	87 ^{1/2} "	2'	48"	977S02
97 ^{5/8} "	87 ^{1/2} "	4'	48"	977S04
97 ^{5/8} "	87 ^{1/2} "	6'	48"	977S06
97 ^{5/8} "	87 ^{1/2} "	8'	48"	977S08
97 ^{5/8} "	87 ^{1/2} "	10'	48"	977S10
97 ^{5/8} "	84 ^{3/4} "	12'	48"	977S12
97 ^{5/8} "	82"	16'	48"	977S16
97 ^{5/8} "	80"	20'	48"	977S20
10' high unit				
121 ^{5/8} "	111 ^{1/2} "	2'	48"	978S02
121 ^{5/8} "	111 ^{1/2} "	4'	48"	978S04
121 ^{5/8} "	111 ^{1/2} "	6'	48"	978S06
121 ^{5/8} "	111 ^{1/2} "	8'	48"	978S08
121 ^{5/8} "	111 ^{1/2} "	10'	48"	978S10
121 ^{5/8} "	108 ^{3/4} "	12'	48"	978S12
121 ^{5/8} "	106"	16'	48"	978S16
121 ^{5/8} "	104"	20'	48"	978S20



FROM PRE-CONFIGURED TO CUSTOM CONFIGURED CONVEYOR CROSSOVERS

Equipto's most expansive line of Conveyor Crossovers are IBC compliant. These crossovers range from standard sizes to extended heights and lengths allowing for crossing over multiple conveyors and configurations. Equipto's crossovers can be used permanently or temporarily. Each system has the parts to be transformed into one of four standard configurations, depending on what changes are needed in your environment. Our crossovers are designed to handle higher worker traffic and have enhanced safety features built into the crossover for a safe and reliable experience.



100 YEARS, 100% AMERICAN MADE

We've been creating high-quality, made-in-America products for over a century, and we're not slowing down anytime soon. Our shelving, storage, mezzanine, and conveyor crossover solutions have been installed by some of the largest and most well-known companies in the world, including Harley Davidson, Caterpillar, Boeing, and more.

 **Material Handling USA**
800-326-4403
<https://www.mh-usa.com/>
Sales@MaterialHandling-USA.com

EQUIPTO[®]
ONE DECISION • INFINITE SOLUTIONS

255 Main Street | Tatamy, PA 18085