

BETTER BUILT
STRONGER BUILT
PANEL BUILT

Material Handling USA
Call Now for a Free
Quote or Site Visit!
222 S. Main St. 5th Floor
Salt Lake City, UT 84101
800-326-4403
<https://www.mh-usa.com/>
Material Handling USA



Panel Built's steel line fabricates powder-coated structural steel mezzanines and stair systems to your specifications—with custom sizes, heights, spans, decking materials and landings. Heavy-duty and long-lasting, Panel Built is your single-source mezzanine system provider.



Mezzanines



Features

- Modular bolt-together systems
- Sturdy handrail with 4" kickplate
- Heavy-duty columns & baseplates
- Heavy-duty prefabricated stairs and accessories
- 4-MIL powder coated steel components provide a superior level of durability against abusive, corrosive applications

Standard Decking Options

- **Advantech** - This is a high quality product superior to ordinary plywood and OSB options due to its enhanced strength and moisture resistance
- **ResinDek** - This is high density composite flooring, recommended for mezzanines requiring a solid floor subject to heavy loads from the use of pallet jacks, carts or dollies
- **Diamond Plate** - This steel decking is considered to be our second most durable flooring
- **Concrete Flooring** - The most durable type of mezzanine flooring by far is concrete
- **Press-locked Grating** - This decking is a common choice in the waste management, mining, and food service industries

Applications

- Towers
- Storage
- Gate Houses
- Field Office
- Electric Sub Station
- Press Box
- Security Office

Structural Mezzanines

Utilize Wasted Space in Your Facility



Add an Office

Powder Coat Finish

Superior Construction

Panel Built's steel line fabricates powdercoated structural steel mezzanines and stair systems to your specifications—with custom sizes, heights, spans, decking materials and landings. Heavy-duty and long-lasting, Panel Built is your single-source mezzanine system provider.

"PBI was the GC for our new office in Wyoming. They did a great job on our building in spite of weather and labor shortages. We had many changes during construction and they always made them happen."

- Jim Wilson





TECHNICAL INFORMATION



Features

- Modular bolt-together systems
- Sturdy handrail with 4" kickplate
- Heavy-duty columns & baseplates
- Heavy-duty prefabricated stairs and accessories
- 4-MIL powder coated steel components provide a superior level of durability against abusive, corrosive applications

Standard Decking Options

■ **Advantech** - This is a high quality product superior to ordinary plywood and OSB options due to its enhanced strength, stiffness and moisture resistance.

■ **ResinDek** - This is high density composite flooring, recommended for mezzanines requiring a solid floor subject to heavy loads from the use of pallet jacks, carts or dollies.

■ **Diamond Plate** - This steel decking is considered to be our second most durable flooring.

■ **Concrete Flooring** - The most durable type of mezzanine flooring by far is concrete.

■ **Press-locked Grating** - Steel grating, commonly referred to as bar grating or press-locked grating, is a common choice in the waste management, mining, and food service industries.

Applications



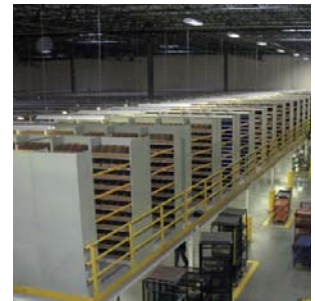
Catwalks



Sport Facilities



Observation Office

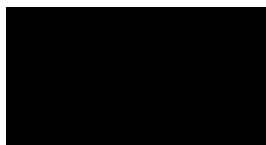


Storage

Standard Color Options



39/40010
Royal Blue



39/80010
Gloss Black 80+



39/20020
Safety Yellow



39/30100
Fire Engine Red



39/70200
ASA-49



39/10010
Sky White



Range Towers



Aerospace Applications

Mezzanine Decking



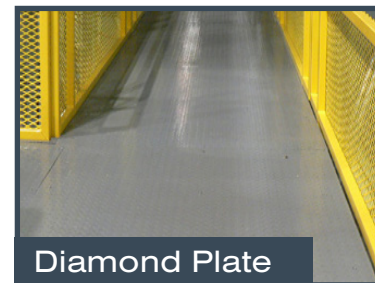
One of the most common options for decking a mezzanine is to use corrugated steel decking material covered by a layer of Advantech. Advantech is a high quality product superior to ordinary plywood and OSB options due to its enhanced strength, stiffness, and moisture resistance. It's advanced density provides a solid and secure resistance to foot traffic, and is designed to withstand weather conditions better than ordinary plywood. This decking method is considered to be our most economical selection and materials are readily available.



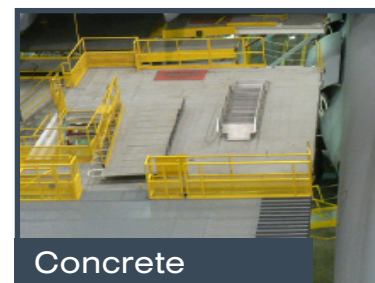
There is one other option for mezzanine floors which is preferred in many applications because of the insurance benefits. Welded grating, is a common choice in the waste management, mining, and food service industries. Steel grating allows for air, light, heat, and fluids to pass through the deck surface. It is strong, durable and virtually maintenance free. Welded grating is a system of interlocking, perpendicular bars; it provides a smooth clean look and excellent lateral support. Steel grating can be an economical choice due to the fact that in many cases, insurance companies will only require sprinkler systems above the mezzanine, since the open grating allows the water to reach lower levels.



Another viable option similar to Advantech is ResinDek. ResinDek is high density composite flooring recommended for mezzanines requiring a solid floor subject to heavy loads from the use of pallet jacks, carts or dollies. This option is installed over 20g. corrugated steel decking and has a load capacity of up to 2,000 lbs. It has an acryseal surface which is not only skid-resistant but also easy to clean. Available in a Gray Diamond Seal finish, ResinDek is ideal for interior decking where heavier loads and/or a more "finished" look are desired.



If durability is a serious factor in your decking decision, you may want to consider a diamond plate floor. Heavy-duty steel tread plate (diamond plate) is generally installed over Advantech. Advantech is mounted over corrugated steel deck to provide greater durability with higher point load and wheel load capacities. It also enables a quiet floor for the work environment as opposed to having diamond plate directly over a steel deck. This decking is considered to be our second most durable flooring.



The most durable type of mezzanine flooring by far is concrete. With a high point load and minimal transmission of noise through the deck, concrete should be used in high capacity industrial and military applications where the mezzanine is considered to be permanent. Steel decking is provided with pour stop needed to pour up to a 6-inch concrete floor.

BETTER BUILT
FASTER BUILT
PANEL BUILT



Panel Built roll-formed mezzanines are lightweight, yet heavy-duty enough to support 150 psf loads. Constructed out of structural steel columns and roll-formed c-channel, these mezzanines come completely pre-fabricated and ready to assemble.



Roll Formed Mezzanines

Panel Built Mezzanines feature:

- Modular bolt-together system for easy installation
- Full-length columns in corners used for handrail (added stability)
- A variety of decking materials available
- Heavy duty side-mounted handrail with 4" kickplate
- Heavy-duty columns & baseplates
- Heavy-duty closed-riser stair systems
- Structural grade bolts and fasteners
- 4-MIL powder coated steel standard components provide a superior level of durability against abusive and/or corrosive applications.
- Galvanized steel available

For applications where higher live loads or greater clear spans are required, Panel Built can design a hybrid system which makes use of structural columns and beams as well as roll-formed channels to accommodate the special needs. Call or email today to speak with a Panel Built Modular Building Specialist about your upcoming project!



Standard powder-coat colors. Custom colors available upon request.