



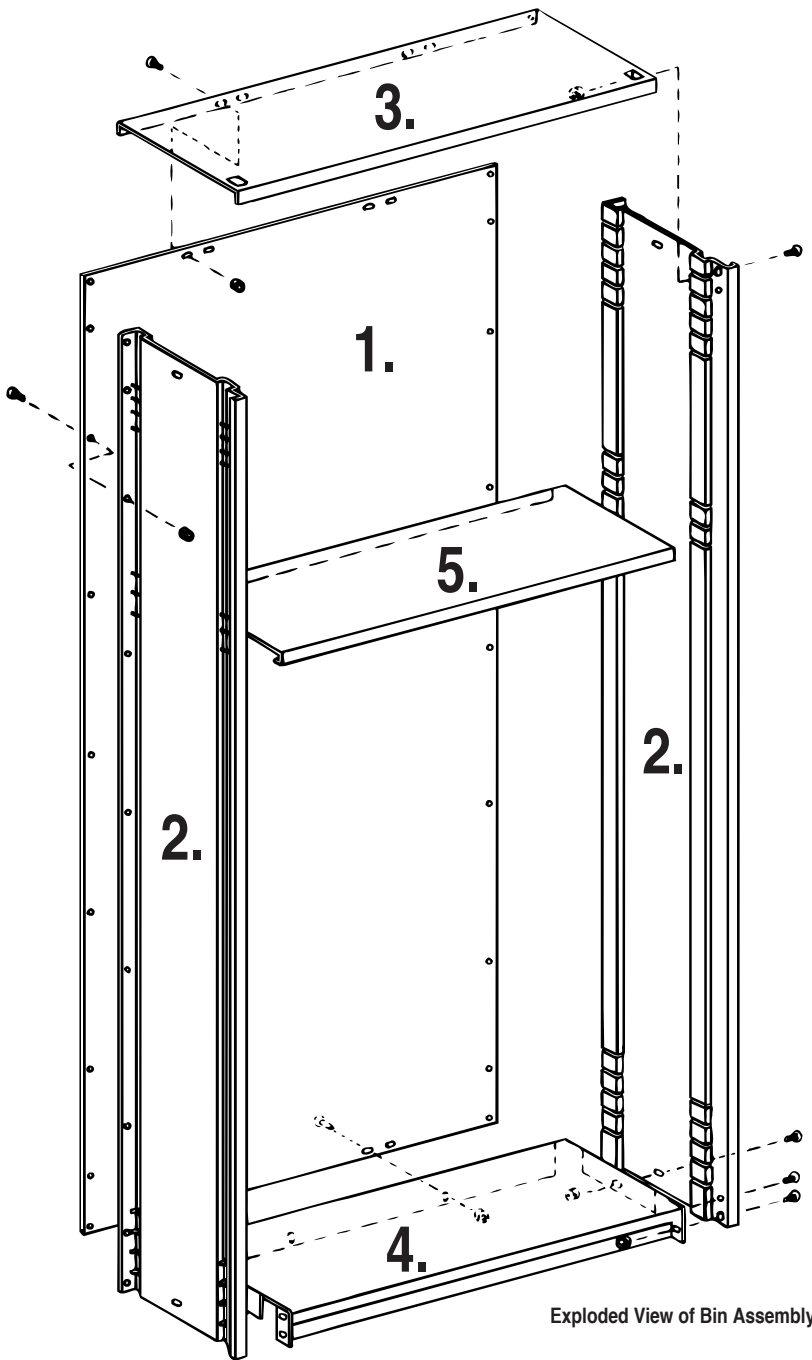
Flexi-Bin® Assembly Instructions

 **Material Handling USA**

**Call Now for a Free
Quote or Site Visit!**

222 S. Main St. 5th Floor
Salt Lake City, UT 84101
800-326-4403
<https://www.mh-usa.com/>

SUPERSTORE MH-USA
Material Handling USA



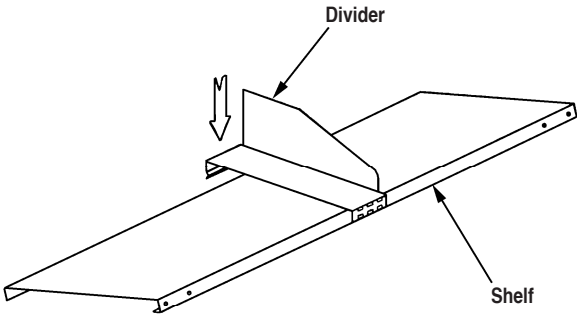
Exploded View of Bin Assembly

- 1.** Place bin back on workhorse or divider cartons.
- 2.** Attach uprights to back with eight (8) #10-24 x 3/8" screws on each side, starting at second hole from either end.
- 3.** Attach top with four (4) #10-24 x 3/8" screws at back and one (1) at each side near front. Tabs fit on outside of uprights.
- 4.** Attach base with two (2) #10-24 x 3/8" screws at back and three (3) on each side.

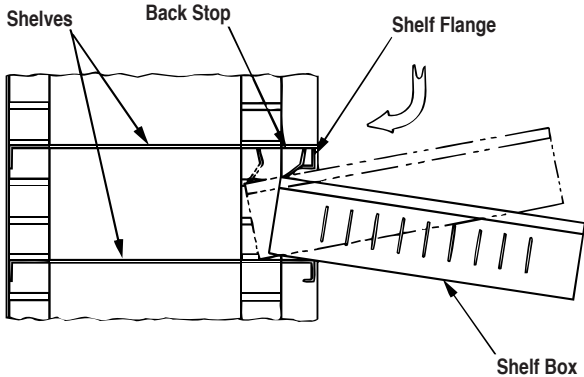
NOTE: The bin uprights are universal - lefts and rights are the same. An extra slot will appear on the top of one side and bottom of the other side. This is for production purposes only.

- 5.** Slide shelves into slots at desired heights, lifting up on front edge of shelf to permit front shelf lances to engage up-

Flexi-Bin® Accessories



- 6.** Hook **DIVIDER** over front flange of shelf and snap down over rear flange. Divider can be moved from side to side. Divider design is protected by patent number



- 7.** Shelves should be spaced at every third row of slots (4-1/2") for shelf boxes. Install **SHELF BOX** by tipping it so the back stop of box can be inserted under shelf flange. Back stop prevents box from being accidentally



Borroughs
CORPORATION

ISO 9001:2000 Registered
3002 N. BURDICK ST. ■ KALAMAZOO, MI 49004-3483
800-748-0227 ■ FAX: 269-342-4161 ■ www.borroughs.com

 **Material Handling USA**

**Call Now for a Free
Quote or Site Visit!**

222 S. Main St. 5th Floor
Salt Lake City, UT 84101
800-326-4403
<https://www.mh-usa.com/>

Material Handling USA

SUPERSTORE

MH-USA

01-50009-00B
JUNE 2006