

INNOVATIVE SECURE STORAGE SOLUTIONS

WOVEN & WELDED WIRE PARTITIONS | VERSATILE MESH ENCLOSURES | WIRE MESH LOCKERS | RACK & MEZZANINE GUARDING

SPACEGUARD PRODUCTS™



 **Material Handling USA**

**Call Now for a Free
Quote or Site Visit!**

222 S. Main St. 5th Floor
Salt Lake City, UT 84101
800-326-4403
<https://www.mh-usa.com/>

SUPERSTORE

MH-USA

Material Handling USA

PRODUCT CATALOG

FORDLOGAN STANDARD-DUTY WOVEN WIRE PARTITIONS

pages 3 - 4



THE TRUSTED NAME IN WOVEN WIRE, STOCKED AND AFFORDABLE

SG2000 VERSATILE MESH ENCLOSURES

pages 5 - 6



SPECIALLY ENGINEERED FOR INCREASED VERSATILITY & CUSTOMIZATION

2180 PREMIUM WELDED WIRE PARTITIONS

pages 7 - 8



INDUSTRIALLY RUGGED, COMMERCIALY APPEALING

SPACEGUARD WIRE MESH STORAGE LOCKERS

pages 9 - 10



MODULAR DESIGN, INDUSTRIAL GRADE, ENDLESS OPTIONS

PALLET RACK SAFETY & SECURITY

pages 11 - 12



HEAVY DUTY, YET EASILY INSTALLED AND MAINTAINED

RAILGUARD MEZZANINE SAFETY SYSTEMS

page 13



WHEN DESIGN AND OVERHEAD SAFETY MATTER

AISLEGUARD SAFETY BARRIER

page 14



PHYSICAL BARRIERS FOR WORK AREA PROTECTION

DOOR OPTIONS LOCK AND CLOSERS

pages 15 - 16



OPTIONS TO FIT VARIABLE SECURE STORAGE NEEDS

HOW TO ORDER FINISHES COLOR OPTIONS ORDER GUIDELINES

page 17 - 18



INSTRUCTIONAL GUIDELINES FOR EFFECTIVE ORDERING

STANDARD DUTY WOVEN WIRE PARTITIONS

- Proven, industry standard design: triple-crimped diamond wire mesh
- Lasting protection of materials and personnel at a low cost

DOORS: Hinged, hinged-dutch, bi-parting-hinged, slide and bi-parting slide doors are available. Each is constructed of same materials as panels in a wide assortment of widths, heights and arrangements. Sliding doors are equipped with two-wheel ball bearing trolleys, enclosed track, door guide and lock keeper. Standard hinge doors are interchangeably designed to hinge left or right and open in or out. Several locking options available upon request.

Standard Hinge Doors

WxH	Stock Part #	Transom
3' x 7'	H377	None
4' x 7'	H477	None
3' x 8'	H378	1'
4' x 8'	H478	1'
3' x 10'	H370	3'
4' x 10'	H470	3'

Standard Slide Doors

WxH	Stock Part #	Transom
3' x 7'	S377	None*
4' x 7'	S477	None*
5' x 7'	S577	None*
3' x 8'	S378	1'
4' x 8'	S478	1'
5' x 8'	S578	1'
3' x 10'	S370	3'
4' x 10'	S470	3'
5' x 10'	S570	3'
5' x 8'	S588	None*
6' x 8'	S688	None*

*Full height slide doors increase overall partition height 6"-9" depending upon door size.

QUICK SHIPMENT

- Standard gray material stocked in 7', 8' and 10' heights
- Same bolt patterns shared across standard heights for easier installation
- Save time and money: stock components ship from Seymour, IN in 48 hours or less

PANELS: Constructed of 10-gauge, triple crimped steel securely clinched to frames. Vertical frames made of 1¼" x 5/8" roll-formed 'C' channels. Horizontal frames made of 1" x ½" roll-formed channels. All frames mortised and tenoned at corners and equipped with slotted holes for quick, easy mounting. Panels include 3.7" sweep space to allow for housekeeping or optional cold-rolled sweep guard secured to panel frame and floor available for high security options.

Base Shoes are 2" die cast with two holes to accept ¼" diameter anchors for securing to the floor; with set screw for leveling.

1½" x ½" roll-formed top capping channels bolt through horizontal frame of panel to enclose wires and provide rigidity.



AFFORDABLE... EFFECTIVE... SPECIFIED EVERYWHERE

- Data center and collocation server cages
- Tool cribs and anti-pilferage supply storage
- Maintenance and driver cages
- Walk-in cooler and liquor enclosures for the food and beverage industry
- Full visibility enclosures allow unrestricted air and light circulation for plumbing and utility systems
- New construction ranging from school equipment storage to elevator and stairway partitions

POSTS AND CONNECTIONS: *Corner Posts* constructed of 1¼" x 1¼" x 1/8" thick angle for 90° corners.

Standard Size Corner Posts

	7' H	8' H	10' H
Post	Stock Part #	Stock Part #	Stock Part #
Corner	CP7	CP8	CP10

Adjustable Corner Posts with hinges welded to roll-formed C-channels for all other corner specifications.

Standard Size Adjustable Corner Posts

	7' H	8' H	10' H
Post	Stock Part #	Stock Part #	Stock Part #
Adj. Corner	AJCP7	AJCP8	AJCP10

Line/Stiffener Posts constructed of 3½" x 1¼" channel with 4" x 7½" base plates for reinforcing fencing. Recommended usage is every 15 linear feet on 7' and 8' high systems and every 10 linear feet on 9', 10' and 12' high systems.

Standard Size Line Posts

	7' H	8' H	10' H
Post	Stock Part #	Stock Part #	Stock Part #
Line	LP7	LP8	LP10

Three-Way Posts are 1¼" U-shaped and punched on all three sides to secure and interconnect multiple enclosures.

Standard Size Three-Way Posts

	7' H	8' H	10' H
Post	Stock Part #	Stock Part #	Stock Part #
Three-Way	TWP7	TWP8	TWP10

Standard Size Panels

	7' H Panels	8' H Panels	10' H Panels
Width	Stock Part #	Stock Part #	Stock Part #
1 ft.	P17	P18	P10
2 ft.	P27	P28	P20
3 ft.	P37	P38	P30
4 ft.	P47	P48	P40
5 ft.	P57	P58	P50

HEAVY DUTY VERSATILE MESH ENCLOSURES

- Panels stack & bolt between posts for simple, secure installation
- Woven & welded wire mesh, expanded metal and solid infill options

DOORS: Hinged, hinged-dutch, bi-parting-hinged, slide and bi-parting slide doors are available. Each is constructed of same materials as panels in a wide assortment of widths, heights and arrangements. Sliding doors are equipped with two-wheel ball bearing trolleys, enclosed track, door guide and lock keeper. Please specify hinge side and swing direction at time of order. Several lock options available upon request.

Standard Size Hinge Doors

WxH	Part #	Transom	Swing
3' x 7'	AHD37-O	None	Out
4' x 7'	AHD47-O	None	Out
3' x 7'	AHD37-I	None	In
4' x 7'	AHD47-I	None	In
3' x 8'	AHD38-O	1'	Out
4' x 8'	AHD48-O	1'	Out
3' x 8'	AHD38-I	1'	In
4' x 8'	AHD48-I	1'	In
3' x 10'	AHD30-O	3'	Out
4' x 10'	AHD40-O	3'	Out
3' x 10'	AHD30-I	3'	In
4' x 10'	AHD40-I	3'	In

Standard Size Slide Doors

WxH	Part #
3' x 7'	ASD37
4' x 7'	ASD47
5' x 7'	ASD57
3' x 8'	ASD38
4' x 8'	ASD48
5' x 8'	ASD58
6' x 8'	ASD68
3' x 10'	ASD30
4' x 10'	ASD40
5' x 10'	ASD50
8' x 10'	ASD50

Full height slide doors increase overall partition height 9"

FLEXIBLY DESIGNED FOR CUSTOMIZATION

- Tapered & special-sized panels for window, stairway & machine guarding
- Accommodates X-large gates, electronic access control & ADA lock options
- Posts available in extended heights and variable or minimal sweep space

PANELS: Constructed standard with 10-gauge wire, woven in 1½" diamond mesh and ¼" x ¾" flat stiffener bars securely welded to 1¼" x 1¼" x 1/8" angle frames with all joints welded. Available in 6-gauge welded wire, several expanded metal sizes and solid infill options for various security requirements. Panels stack vertically to desired height and are equipped with slotted holes for quick mounting.

ENGINEERED FOR HIGH SECURITY/SAFETY APPLICATIONS

- Military tactical equipment and reserve center storage
- Access controlled data center cages, include security below raised floors
- DEA physical security of Schedule III through V controlled substances
- U.S. Postal certified sortation and DHS/TSA screening cages
- Evidence rooms and detention cells
- Robotic and vertical lift enclosures
- Aerosol and combustible substance enclosures

POSTS AND CONNECTIONS: Panels are stacked vertically between 14-gauge 2" square tube posts and bolt through the secure side of enclosure for added security. Posts include a series of 3/8" diameter holes to accept mounting hardware.

Line/Run Posts are drilled through two sides and *Corner, Door and Three-Way Posts* are drilled through on all four sides to accommodate panel and door hardware. *Adjustable Corner Posts* utilize 3" hinges welded to posts for non-right angles.

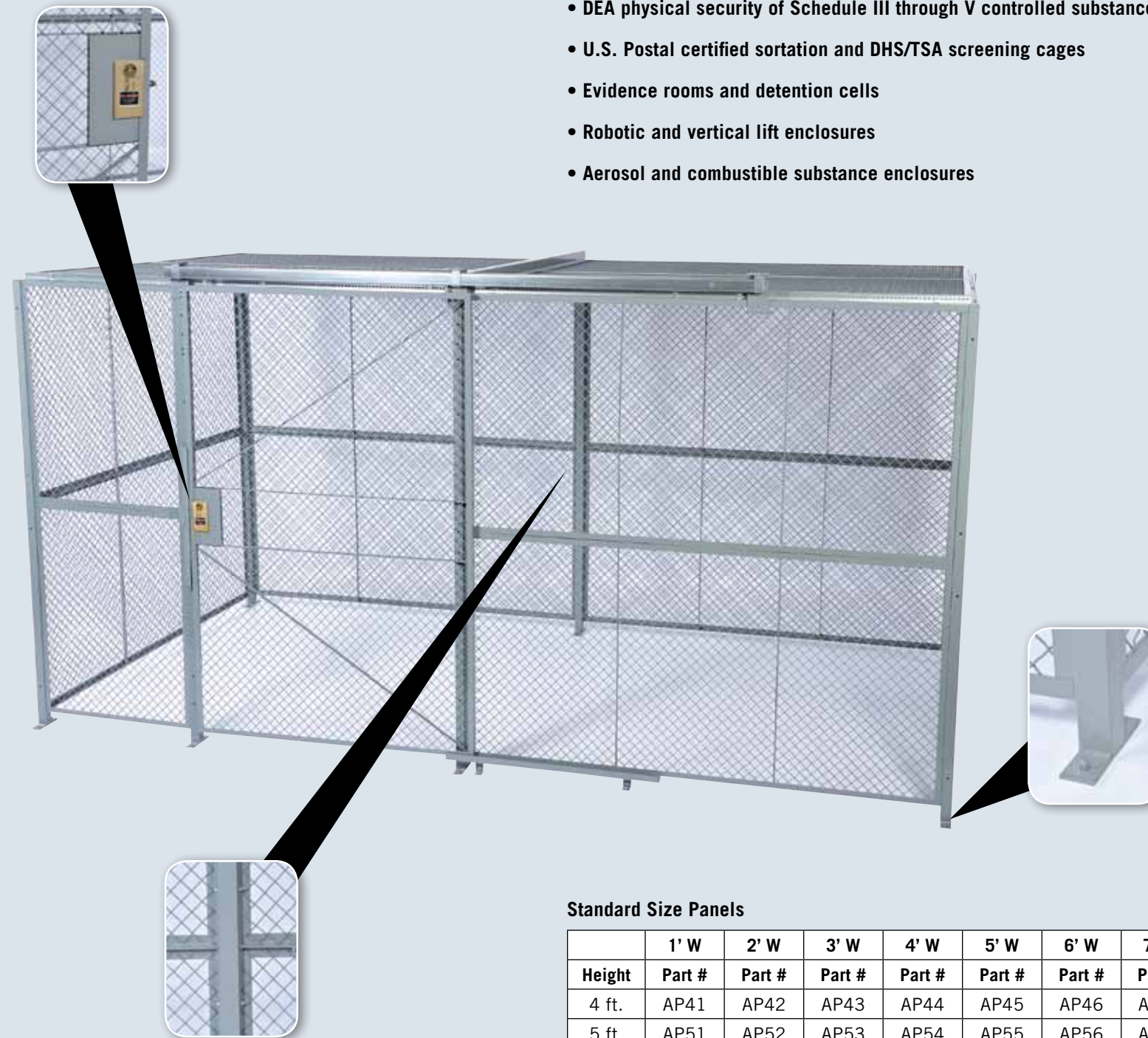
Base Plates are 2" x 7" x ¼" steel flat stock welded to posts for secure floor connections. 4" x 7" oversized base plates are used on extended height posts.

Standard Size Posts

	8' 3/4' H	10' 3/4' H
Post	Part #	Part #
Corner	APTC01	APTC02
Adj. Corner	APTAJ01	APTAJ02
Three-Way	APTT01	APTT02
Line/Run	APTL01	APTL02
Hinge Door	APTHD01	APTHD02
Slide Door	APTSD01	APTSD02

Standard Size Panels

	1' W	2' W	3' W	4' W	5' W	6' W	7' W	8' W	9' W	10' W
Height	Part #	Part #	Part #	Part #	Part #	Part #	Part #	Part #	Part #	Part #
4 ft.	AP41	AP42	AP43	AP44	AP45	AP46	AP47	AP48	AP49	AP41
5 ft.	AP51	AP52	AP53	AP54	AP55	AP56	AP57	AP58	AP59	AP510



PREMIUM WELDED WIRE PARTITIONS

- Heavy-duty design provides unrivaled rigidity compared to traditional systems
- Clean lines optimal for high traffic, tenant and front-of-house applications

DOORS: Hinged and slide doors are available in full height and transom styles. Each is constructed of same materials as panels in a wide assortment of widths, heights and arrangements. Sliding doors are equipped with two-wheel ball bearing trolleys, enclosed track, door guide and lock keeper. Hinge doors are welded in the door frame for easy installation. Please specify hinge side and swing direction at time of order. Several lock options available upon request.

Standard Size Hinge Doors

WxH	Part #	Transom	Hinge	Swing
3' x 7'	TF37HD-	None	Left (L) or Right (R)	In (I) or Out (O)
4' x 7'	TF47HD-	None	Left (L) or Right (R)	In (I) or Out (O)
3' x 8'	TF38HD-	1'	Left (L) or Right (R)	In (I) or Out (O)
4' x 8'	TF48HD-	1'	Left (L) or Right (R)	In (I) or Out (O)
3' x 10'	TF310HD-	3'	Left (L) or Right (R)	In (I) or Out (O)
4' x 10'	TF410HD-	3'	Left (L) or Right (R)	In (I) or Out (O)

Note: Both Hinge and Swing denotation is required to accurately determine the correct part number. For example, a 3' x 7' Hinge Door w/1' Transom, Hinge Left, Swing Out would be: TF38HD-LO

Standard Size Slide Doors

WxH	Part #	Locking Direction
3' x 7'	TF37SD-	Left (LL) or Right (LR)
4' x 7'	TF47SD-	Left (LL) or Right (LR)
5' x 7'	TF57SD-	Left (LL) or Right (LR)
3' x 8'	TF38SD-	Left (LL) or Right (LR)
4' x 8'	TF48SD-	Left (LL) or Right (LR)
5' x 8'	TF58SD-	Left (LL) or Right (LR)
3' x 10'	TF310SD-	Left (LL) or Right (LR)
4' x 10'	TF410SD-	Left (LL) or Right (LR)
5' x 10'	TF510SD-	Left (LL) or Right (LR)

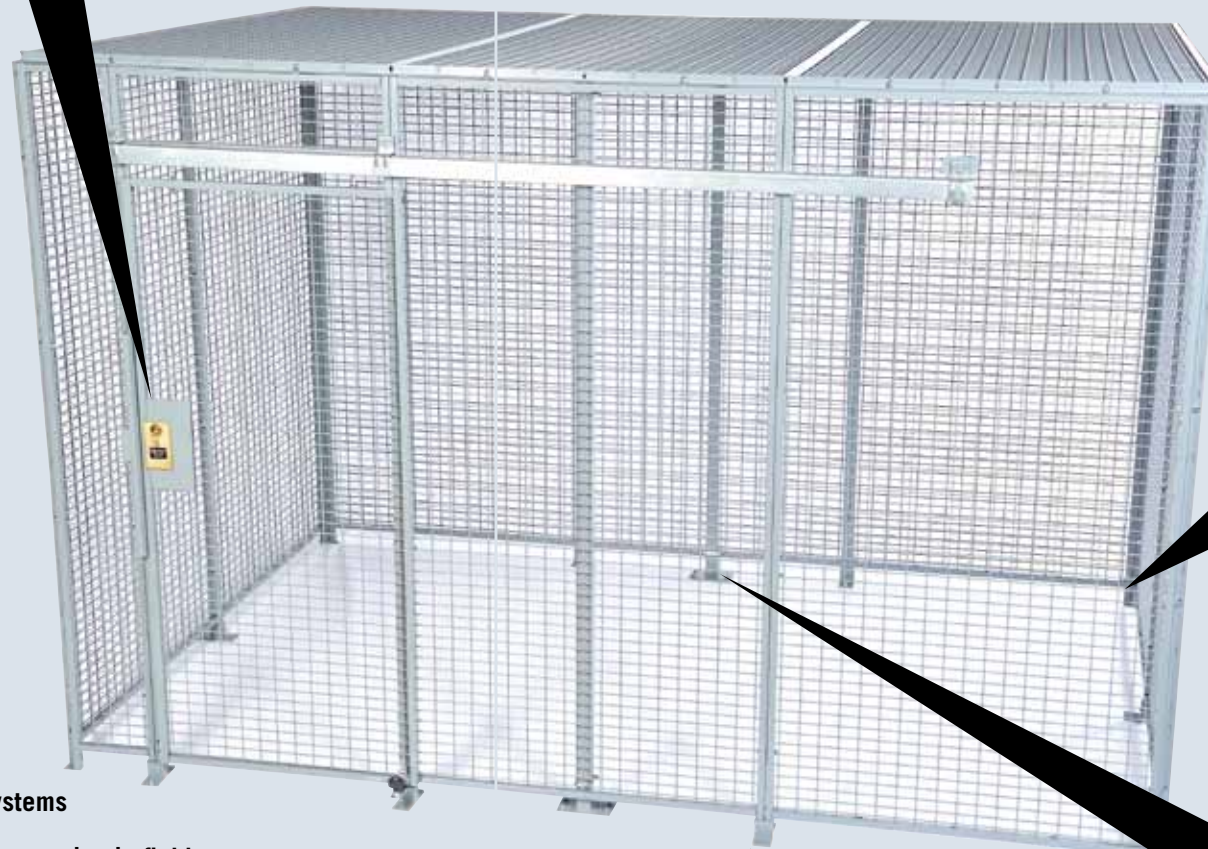
Note: Locking direction is required to accurately determine the correct part number. For example, a 3' x 8' Slide Door locking to the right would be: TF38SD-LR

PANELS: Constructed with 6-gauge wire, resistance welded in a 1½" x 2½" rectangular mesh. Mesh is offset to the front side of panel so that wire does not interfere with connection hardware. Mesh is securely welded to a 1" square 16-gauge structural tube with all joints welded and equipped with ¼" x ⅜" slotted holes for quick mounting.

Base Shoes are oversized 2½" die cast with two holes to accept ⅜" diameter anchors for securing to the floor with setscrew for leveling.

EASY TO INSTALL

- Assembles in ½ the time of competitive systems
- Fully framed panels do not require being cut to size in field
- Through-bolts connect panels without interference from wire mesh
- Hinged doors are pre-hung in the frame
- Allows for simple cut-outs around piping & other obstructions



INDUSTRIALLY RUGGED ... COMMERCIALLY APPEALING

- Data center and collocation server rooms
- Office supply, file and network equipment security
- Service parts store room
- Residential and office tenant storage
- Anti-pilferage and layaway storage for retailers
- Food and liquor inventory control for restaurants

POSTS AND CONNECTIONS: *Corner Posts* constructed of 1¼" x 1¼" x ⅛" thick angle for 90° corners.

Standard Size Corner Posts

	7' H	8' H	10' H
Post	Part #	Part #	Part #
Corner	TF7CP	TF8CP	TF10CP

Adjustable Corner Kits with 2½" butt hinges and single base shoes for all other corner specifications.

Standard Size Adjustable Corner Kits

	7' H	8' H	10' H
Post	Part #	Part #	Part #
Adj. Corner	TF7AJCK	TF8AJCK	TF10AJCK

Line/Stiffener Posts constructed of 14-gauge, 2" square tube posts with 4" x 7½" x ⅜" base plates for reinforcing fencing. Line posts connect to the interior side of panel so that system does not grow.

Standard Size Line Posts

	7' H	8' H	10' H
Post	Part #	Part #	Part #
Line	TF7LP	TF8LP	TF10LP

Three-Way Posts are 1¼" U-shaped and punched on all three sides to secure and interconnect multiple enclosures.

Standard Size Three-Way Posts

	7' H	8' H	10' H
Post	Part #	Part #	Part #
Three-Way	TFTWP7	TFTWP8	TFTWP10

Standard Size Panels

	7' H Panels	8' H Panels	10' H Panels
Width	Part #	Part #	Part #
1 ft.	TF17P	TF18P	TF110P
2 ft.	TF27P	TF28P	TF210P
3 ft.	TF37P	TF38P	TF310P
4 ft.	TF47P	TF48P	TF410P
5 ft.	TF57P	TF58P	TF510P

MODULAR WIRE MESH STORAGE LOCKERS

- Fully framed doors & panels for quick assembly & durable install

FLEXIBLE DESIGN, UNLIMITED OPTIONS

- Standard and custom sizes available
- Single, double and triple tier configurations
- Woven, welded wire mesh, expanded metal or solid sheet infill

DOORS: Framed doors with 2½" hinges welded to outer panel frame are offered in single, double or triple tier configurations. Single tier units are also available with slide or bi-parting hinge doors. Doors available in maximum width of 4' to ensure proper operation, although additional wire panels can be added to extend.

Single Hinge Locker Doors

	Single Tier	Double Tier
WxH	Part #	Part #
3' x 90"	SLD375	DLD375
4' x 90"	SLD475	DLD475
Custom	ZSLDOOR	ZDLDOOR



Special Application Locker Doors†

	Triple Tier	Slide Door	Bi-Parting	Integrated Hinge*
Custom	ZTLDOOR	ZSLFRONT	ZDLDOOR	ZHLFRONT

†Dimensions of door panels required

*For hinge doors with an integrated panel to the side or transom above the door.

Single Tier Starters

WxH	Part #
3' x 3'	SLS3375
3' x 4'	SLS3475
3' x 5'	SLS3575
4' x 3'	SLS4375
4' x 4'	SLS4475
4' x 5'	SLS4575

Double Tier Starters

WxH	Part #
3' x 3'	SLA3375
3' x 4'	SLA3475
3' x 5'	SLA3575
4' x 3'	SLA4375
4' x 4'	SLA4475
4' x 5'	SLA4575

Single Tier Adders

WxH	Part #
3' x 3'	DLS3375
3' x 4'	DLS3475
3' x 5'	DLS3575
4' x 3'	DLS4375
4' x 4'	DLS4475
4' x 5'	DLS4575

Single Tier Adders

WxH	Part #
3' x 3'	DLA3375
3' x 4'	DLA3475
3' x 5'	DLA3575
4' x 3'	DLA4375
4' x 4'	DLA4475
4' x 5'	DLA4575

Starter: (1) Door Panel - (2) Side Panels
(1) Shelf (Double Tier Units Only)

Adder: (1) Door Panel - (2) Side Panels
(1) Shelf (Double Tier Units Only)



INDUSTRIAL GRADE, INFINITE APPLICATIONS

- Condo and apartment tenant storage
- Military TA-50 & personnel readiness
- Tack and feed lockers
- Portable military gear lockers
- Portable solutions for hospitality, tradeshow and merchandisers

OPTIONAL PANELS: Ceiling Panels are constructed of framed 10-gauge wire mesh and mounted using perforated galvanized slotted angle. Back Panels consist of 20-gauge galvanized sheet steel, furnished with a 3" x 1/8" hot rolled, flat vertical splice strip to conconnect back panels on adjacent units.



Locker Ceiling Panels

WXD	Part #
3' x 2'	AP32
3' x 3'	AP33
3' x 4'	AP34
3' x 5'	AP35
4' x 2'	AP42
4' x 3'	AP43
4' x 4'	AP44
4' x 5'	AP45

Note: Ceiling Perimeter angle (ACPA10) is needed for all ceiling panels. The perforated galvanized slotted angle is available in 10' lengths.

Locker Back Panels

WxH	Part #
3' x 90"	LBACK375
4' x 90"	LBACK475
Custom	ZLBACK



PANELS: Constructed standard with 10-gauge wire, woven in 1½" diamond mesh & ¼" & ¾" flat stiffener bars securely welded to 1¼" x 1¼" x 1/8" angle frames with all joints welded. Available in 6-gauge welded wire, several expanded metal sizes and solid infill options for various security requirements. Panels come in 90" standard heights & equipped with slotted holes for quick mounting.



Locker Side Panels

WxH	Part #
2' x 90"	L275
3' x 90"	L375
4' x 90"	L475
4' x 90"	L575
Custom	ZLPANEL

SUPERIOR SAFETY RACK GUARDING

- **Heavy-duty:** Constructed of our unrivaled 6-gauge welded wire mesh to ensure product strength and integrity
- **Flexible Design:** Available in a wide range of sizes to fit your system; extension posts to protect items above top beams
- **Simple to Install:** Adjustable telescoping brackets make it possible to mount to virtually any style of upright
- **Durable:** Prevent items from falling or shifting with less maintenance than safety netting

PANELS: Constructed of 6-gauge welded wire mesh in a 2½" square pattern. Panels are welded at all corners with mesh securely welded to 1¼" x 1¼" x 1/8" thick angle with 3/8" x 7/8" slotted holes.

Standard Safety Panels

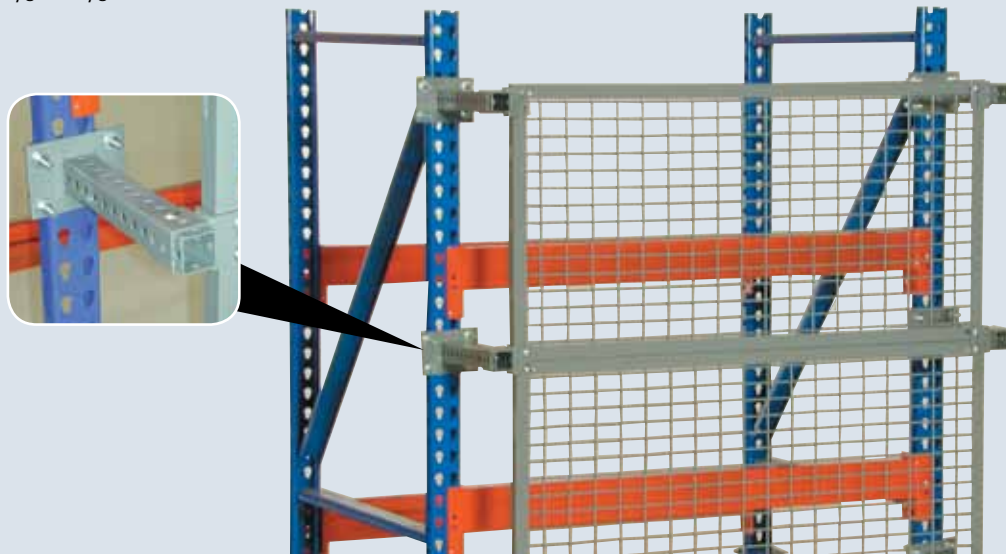
Part #	Width	Height
RS37	84"	36"
RS38	96"	36"
RS39	108"	36"
RS30	120"	36"
RS47	84"	48"
RS48	96"	48"
RS49	108"	48"
RS40	120"	48"
RS57	84"	60"
RS58	96"	60"
RS59	108"	60"
RS50	120"	60"

NOTE: Custom sizes available. To request a custom sized panel, add a 'Z' to the end of the part number that exceeds the width and height of the panel needed.

EXAMPLE:
Panel Size: 106" x 48" Part Number: RS49Z

Adjustable Mounting Brackets

Part #	Sleeve Style
URB12S	Single
URB12D	Double



BRACKETS: Adjustable Rack Safety mounting brackets use 2" square tube collar and 1¾" square by 12" perforated tube arm. A 4" x 3/16" thick, hot rolled steel flat base is punched with four 5/8" diameter holes then welded to base of 1¾" tube.

Fixed Rack Safety Mounting Brackets consists of 3" x 1/8" steel formed on both ends. One end is formed with 1½" return and two 3/8" x 1" slotted holes punched for securing to rack safety panel.

Fixed Mounting Brackets

Part #	RBBR00	RBBR03	RBBR04	RBBR05	RBBR06	RBBR08	RBBR10	RBBR12
Offset	Flush	3"	4"	5"	6"	8"	10"	12"



Extensions post extends 4' above height of upright and is made of 3½" x 1¼" 10-gauge channel.

Pallet Rack Security Doors

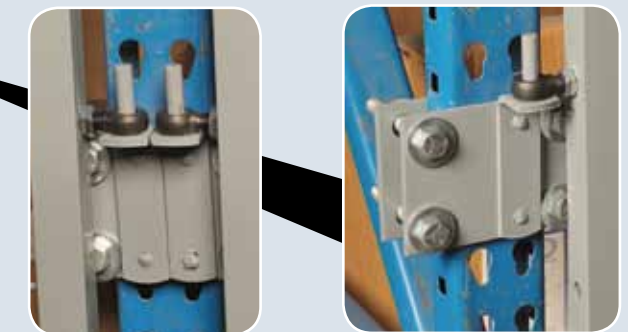
Part #	Bracket Style
RSEP4	Adjustable
REBP4	Fixed

QUALITY PALLET RACK SECURITY DOORS

- **Affordable:** Mounts directly to rack uprights—standard doors do not require separate posts
- **Flexible Design:** Door height can be positioned independent of upright type or hole pattern
- **Simple to Install:** Brackets and rod ends allow to set and level doors in the field
- **Secure:** Utilizes same material as rack safety systems for consistent design of full enclosures

Pallet Rack Security Doors

Part #	W x H
RD68	6' x 8'
RD60	6' x 10'
RD88	8' x 8'
RD80	8' x 10'
RD08	10' x 8'
RD00	10' x 10'



Door Mounting Brackets are available with single or double pivot brackets welded to 3/16" thick plate on the front of the upright and connects to a second plate to clamp to the upright.

Pallet Rack Security Doors

Part #	Bracket Style
PB1	Single
PB2	Double

COST EFFECTIVE OVERHEAD PROTECTION

- Heavy-duty handrail system designed for easy installation on mezzanines and catwalks
- Versatile in-fill panels available for existing handrail systems
- Posts can be deck or side mounted
- Gates and pull out panels available
- Solid kick-plates prevent falling items
- When properly installed, meets OSHA and IBC requirements

PANELS: Constructed standard with 10-gauge wire, woven in 1½" diamond mesh & ¼" & ¾" flat stiffener bars securely welded to 1¼" x 1¼" x 1/8" angle frames with all joints welded. 3" x 1/8" steel kick-plate welded to bottom of panels. Panels come in 44" standard heights & equipped with slotted holes for quick mounting. 2" x 2" 14-gauge steel top rails are bolted to the top of each panel.

PULL-OUT PANELS: Each is constructed of the same materials as panels. 1" x 1½" steel channels are bolted to posts to form guides for the panel.

DOORS: Hinged and bi-parting hinged are available. Each is constructed of the same materials as panels in an assortment of widths. Each door panel is equipped with two 3" x 3" steel hinges. All doors are equipped with a steel latch.

POSTS: Panels are installed between 14-gauge 2" square tube posts. Posts include a series of 3/8" diameter holes to accept mounting hardware. Line/Run posts are drilled through two sides and Corner posts are drilled through on all four sides. Base plates, for deck mounted posts, are 2" x 7" x ¼" steel flat stock (for line and side mount posts) or 4' x 4" x ¼" steel flat stock (for corner posts). Base plates welded to posts for secure floor sections.

Standard Size Pull-Out Panels

Width	Part #
1'	RP1
4'	RP4
6'	RP6
8'	RP8

Standard Size Pull-Out Panels

Width	Part #
3'	RPOD3
4'	RPOD4
5'	RPOD5

Standard Size Hinge Doors

Part #	Type	Width
RHD3	Single Hinge	3'
RHD4	Single Hinge	4'
RDHD6	Double Hinge	6'
RDHD8	Double Hinge	8'

Standard Size Pull-Out Panels

Type	Part #
Deck Mount - Line/Run	RLP4
Deck Mount - Corner	RCP4
Side Mount	RSP4

HEAVY-DUTY GUARD RAIL AND BOLLARDS

- Simple bolt-through design for easy installation
- Tested to withstand impacts of over 10,000 lbs at 4mph
- Structural channel rails are more durable than corrugated highway rails
- Low priced square tube bollards now available

RAILS: Constructed standard with 4" x 8" x 4" formed 7-gauge steel channel with 1/8" plate welded in channel to provide additional rigidity.

POSTS: Constructed of 4" x 3/16" square wall steel tube drilled to accept ¾" hardware. Line posts are drilled through two sides and Corner posts are drilled through on all four sides. Base plates are 8" x 12" x ½" steel flat stock welded to posts for secure floor sections.

Standard Size Rails

Width	Part #
4'	AG4
6'	AG6
8'	AG8
9'	AG9
10'	AG10

Standard Size Posts

Type	Part #
21" line post	AGLP1
21" corner post	AGCP1
43" line post	AGLP2
43" corner post	AGCP2





MORTISE CYLINDER GATE LOCKS

¹⁵/₁₆" deep mortise cylinder locks are standardized to fit slide and hinge gate locks on all 3 of our wire partition lines. Supplied keyed differently, the locks are also available in optional keyed alike, master keyed, without core, IC housing, or Best cylinder. Locks are reversible with hook for slide doors and beveled latch for hinge doors. Back of locks ship with standard thumb turn piece, but available in optional double lock, knob, or lever assemblies on secure side.

INTEGRATED PADLOCK HASPS

Padlock hasps are available when units are accessed by multiple personnel or tenants that change regularly over time (padlocks not included). Single hasps are centered in the door for maximum strength. Also available in double padlock configurations in both hinge and slide doors for military and other high security applications.



FLEXIBLE LOCK BOX

Our pre-engineered Universal lock box is a heavy-duty 10" x 12" unit welded in the door frame. Our lock box offers ultimate flexibility, whether you need to standardize your facility with cylinder types incompatible with our mortise gate locks or require ADA compliant lever assemblies. It accepts virtually any lock with a 2³/₄" backset and 1/2" throw. Custom lock boxes are also available, some already pre-designed to handle mechanical push button locks.

FACTORY INSTALLED PANIC BAR DOORS

Panic bars are available for single swing doors in all SpaceGuard wire partition lines to meet emergency exit requirements. Includes standard mortise lock and thumb latch handle, and also available with optional Best cylinder (less core) or electric strike. Pre-engineered to work with manufacturer's hydraulic closer.



ELECTRIC STRIKE FOR HINGE DOORS

Our adjustable electric strike for hinge doors allow for up to an 1/8" of final field adjustability of the strike after the door and posts are installed level and plumb. The strike mounts to a welded spacer and recesses within our door post. Offering up to 900 lb. of holding force, the unit can be made fail safe with battery backup controller (customer supplied) and is available with or without a keyed cylinder. Operates on 24 VDC and includes transformer and rectifier.



MAGNETIC LOCK FOR SLIDE DOORS

Our low profile magnetic lock is integrated into our slide door and heavy-duty receiver to provide minimal obstruction in the door opening. The lock is centered on the door (depending on door height) offering up to 750 lb. of holding force. The unit can be made fail secure with battery backup controller (customer supplied) and offers no residual magnetism. Operates on field selectable input of 12 or 24 VDC and includes transformer and rectifier.

MAGNETIC LOCK FOR HINGE DOORS

SpaceGuard proudly offers a magnetic lock option for our hinge doors. The magnetic lock is centered on the door, as opposed to at the top, to minimize potential deflection and offer maximum security. Offering up to 600 lb. of shear holding force, the unit offers instant release and mounts flush for minimal interference in the door opening. The unit can be made fail secure with battery backup controller (customer supplied). Works in conjunction with card, key pad and biometric access controls (not included). Operates on 24 VDC and includes transformer and rectifier.



CLOSING OPTIONS

SpaceGuard Products offers an array of closing options ranging from hydraulic closers to spring hinges. Other door options include gravity self-closing kits for slide doors and vertical rise gates. Call or email a sales associate at sales@spaceguardproducts.com to learn more.

SAFETY INTERLOCK SWITCHES

Universal tongue operated safety interlock switches are available for gates used in applications such as vertical lift and robotic enclosures. Strong and versatile, the interlocks are equipped with 2 N/C positive break safety contacts and are vibration resistant. Operates on AC OPERATION 500V / 1A, 250V / 2A, 100V / 5A DC OPERATION 250V / 0.5A, 24V / 2A

LOCK OPTIONS NOT AVAILABLE IN SOME PRODUCT LINES. CONTACT OUR SALES TEAM AT 800-841-0680 TO LEARN MORE.

FINISHES

All SpaceGuard area guarding and secure storage products come standard with a two-phase Phosphate wash and factory applied gray polyester powder coat. Powder coating is a UV and Weather Resistant material, produces a thicker coating without running or sagging and is environmentally friendly emitting zero or near zero volatile organic compounds (VOC).

Optional factory applied Plascoat is now available in several colors including gray and black. Plascoat out performs other coatings in extreme cold (below -5* C), extended exposure to sunlight, outdoor use, contact with abrasives, and when fungal or lichen growth is possible. Plascoat provides unequaled protection against high corrosive environments including exposure to salts from sea air or used with livestock and horse feed. Plascoat is FDA approved for non-fatty food environments and is much more affordable than stainless steel.

Optional hot dip galvanized finish is also available for humid environments or outdoor use.

Please consult with one of our sales associates for pricing, lead time and products available in optional finishes.

COLOR OPTIONS

Optional gray, black, yellow, blue, red, green, white and galvanized or color match available for nominal upcharge.

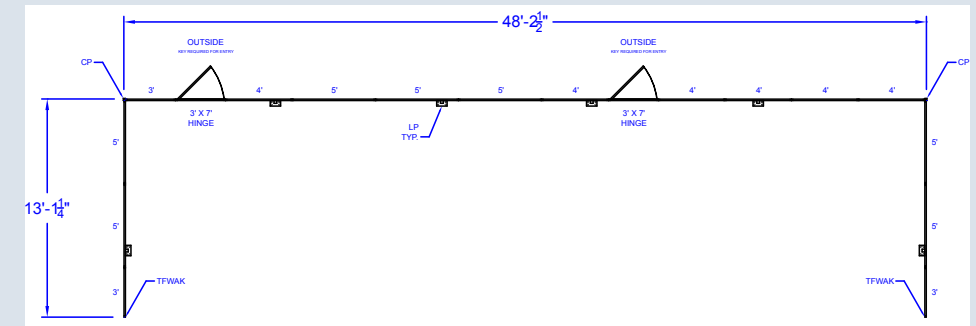


WIRE PARTITION LINES

Make a rough floor plan of the area to be enclosed.

Information to include with floor plan:

- A) Critical Measurements
- B) Secure Side of Enclosure
- C) Height of Enclosure
- D) Is A Top Required?
- E) Door & Lock Needs



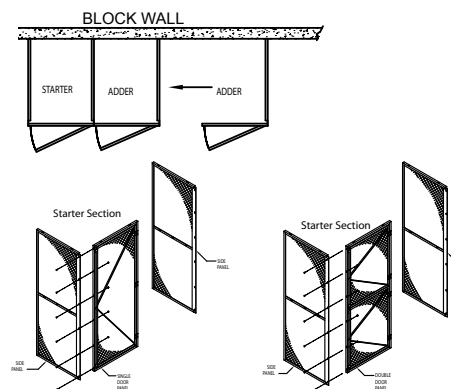
STORAGE LOCKERS

Make a rough floor plan of the area to be enclosed.

Information to include with floor plan:

- A) Quantity of Unit(s)
- B) Size of Unit(s)
- C) Single/Double Tier Designation
- D) Height of Unit(s)
- E) Is A Top Required?
- F) Include Backs or Mount To Walls?

Fax or email detailed plan to our sales team at sales@spaceguardproducts.com

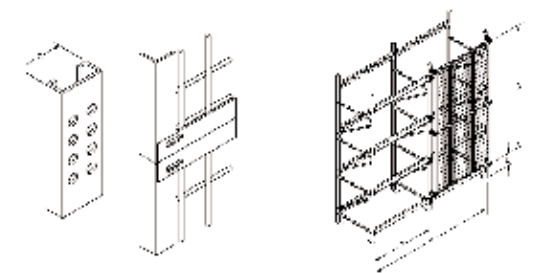


RACK SAFETY SYSTEMS

Information to include:

- A) Quantity of Row(s)
- B) Quantity of Bays per Row
- C) Length of Beams
- D) Quantity of Beam Levels per Bay
- E) Upright Pattern
- F) Size and Height of Upright Post
- G) Height of Safety Panels/Doors Needed
- H) Height from Finished Floor to Bottom of Safety Panel
- I) Desired Offset of Safety Panel from Upright

Fax or email detailed information to our sales team at sales@spaceguardproducts.com





Material Handling USA

SUPERSTORE

Call Now for a Free Quote or Site Visit!

222 S. Main St. 5th Floor
Salt Lake City, UT 84101
800-326-4403
<https://www.mh-usa.com/>

MH-USA

Material Handling USA

