



PAN CAROUSEL

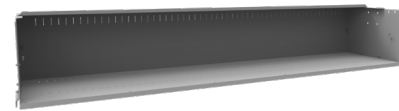
The Vidir Pan Carousel is a fully automated storage system with carriers that rotate up and down to deliver SKU's to the operator at an ergonomic height. The carousel can recover an average of 80% of your floor space by utilizing overhead space for storage, increasing inventory accuracy, providing greater security, control, and increasing workplace safety. Simple and intuitive controls easily interface with enterprise level ERP and WMS systems to provide a fully integrated storage solution.

CARRIER CONFIGURATION

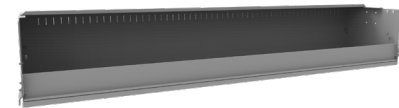
Whether storing products directly in the carrier, using standard storage containers, or application specific containers and bins, the Pan Carousel's flexible carrier design can be optimized to best utilize the available cubic feet within the carousel.

Vidir's carriers come in five standard sizes with up to 30 ft³ of available storage per carrier.* Up to 2,500 lbs can be loaded per carrier to a total of 39,000 per carousel.

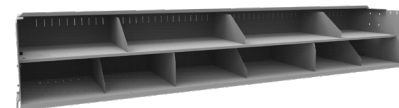
The carriers can be sub-divided using removable dividers and intermediate shelves to create smaller compartments and more surface area for smaller SKU applications. Carrier lips are available in 2" and 6" sizes ensuring loose items remain securely in-place during rotation. Additionally, bins and totes can be used as needed to create a custom high density storage system that is application specific.



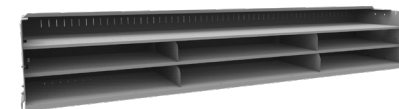
Open carrier option accepts any number of storage configurations.



Carrier with 6" lip creating a self-contained storage bin.



Carrier with dividers for simple and easy sorting SKU's.



Carrier with 2 intermediate shelves and supporting dividers for small part configurations.



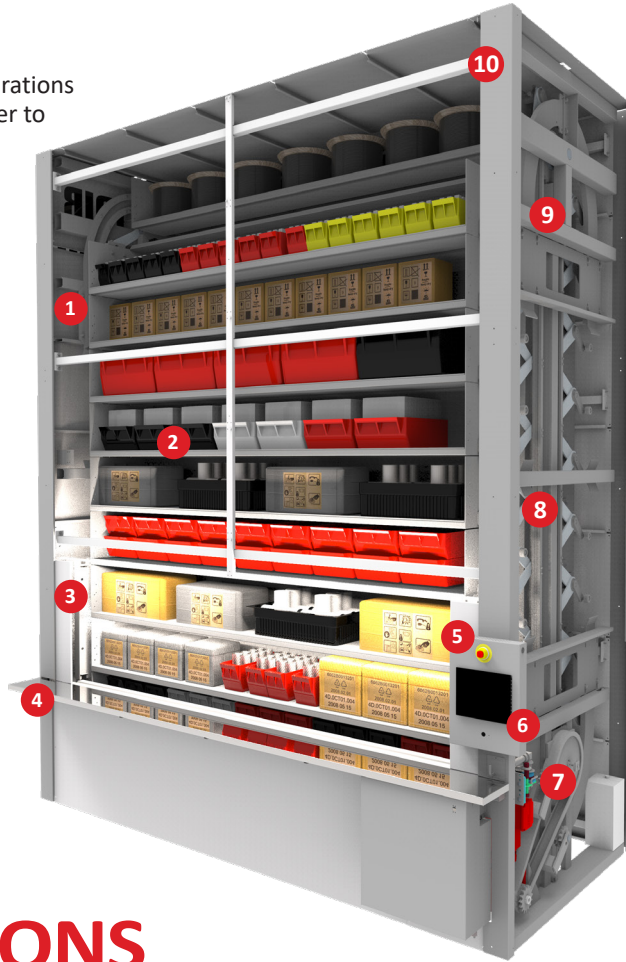
- Recovers average of 80% of your floor space
- Can operate and track inventory as an individual database or integrate with enterprise level ERP systems
- Increased workplace safety
- Improved productivity with more efficient SKU picking
- Improved security with optional gates, password protection, and access logs
- Access to stored products at all times with the emergency rotation feature
- Flexible carrier configuration options to meet changing inventory needs
- Customize features and size to your application

Safe Handling • Easy Access • Maximum Storage • Fast Retrieval • Small Footprint

Toll Free: 800.210.0141 www.storevertical.com

FEATURES & BENEFITS

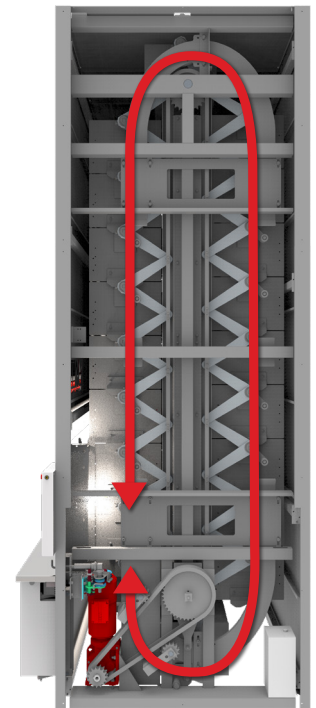
- 1 Carrier Options**
Dynamic internal carrier configurations so you can customize each carrier to match your product.
- 2 Organize Inventory**
by centralizing it to one location, reducing your labour requirement.
- 3 Safety Light Curtain**
Automatically stops carousel rotation when breached.
- 4 Ergonomic Work Bench**
Increases safety. no more reaching from ladders, or crouching on dusty floors to retrieve and count parts.
- 5 Emergency Stop**
Shuts down entire carousel in case of emergency.



- 6 Touchscreen**
Provides real time inventory control. Pick individual items or entire lists.
- 7 Emergency Rotation**
Allows for product retrieval in case of power outage.
- 8 Nested Shelving**
Designed to ensure the highest possible storage density.
- 9 Overhead Space**
Fully maximizes overhead space for storage to recover valuable floor space.
- 10 Up to 879ft³ of Storage**
Automated vertical storage for up to 879ft³ with standard models.

SPECIFICATIONS

TECHNICAL SPECIFICATIONS	IMPERIAL	METRIC
UNIT SPECIFICATIONS		
Height	max 28'	max 8,534 mm
Depth	6'0" / 6' 10"	1,828 mm / 2,082 mm
Width	8'0" - 12'3"	2,438 mm - 3,734 mm
TRAY SPECIFICATIONS		
Height	12" - 19"	304 mm / 483 mm
Depth	18" - 24"	457 mm / 609 mm
Width	72" - 119"	1,829 mm - 3,022 mm
CAPACITY SPECIFICATIONS		
Load Capacity	max 39,000 lbs	max 17,690 kg
Load per Carrier	max 2,500 lbs	max 1,134 kg
Unit Imbalance	2,990 lbs	1,357 kg
Retrieval Speed	22 / 26.5 ft/min	6,706 / 8,077 mm/min



Safe Handling • Easy Access • Maximum Storage • Fast Retrieval • Small Footprint

Toll Free: 800.210.0141 www.storevertical.com